

# AREA CONTEXT/ZONING

APPLICANT: ROGERS WIRELESS INC.  
9329 McCOWAN ROAD

FILE No: SC05020638(SB)

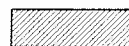


DEVELOPMENT SERVICES COMMISSION

DWN BY: DD

CHK BY: SB

SCALE 1:



SUBJECT LANDS

DATE: 100507

FIGURE No.2



SC05020638.dgn 11/10/2007 12:26:39 PM



# AIR PHOTO 2005

APPLICANT: ROGERS WIRELESS INC.  
9329 McCOWAN ROAD

FILE No: SC05020638(SB)

 SUBJECT LANDS

DATE: 100507



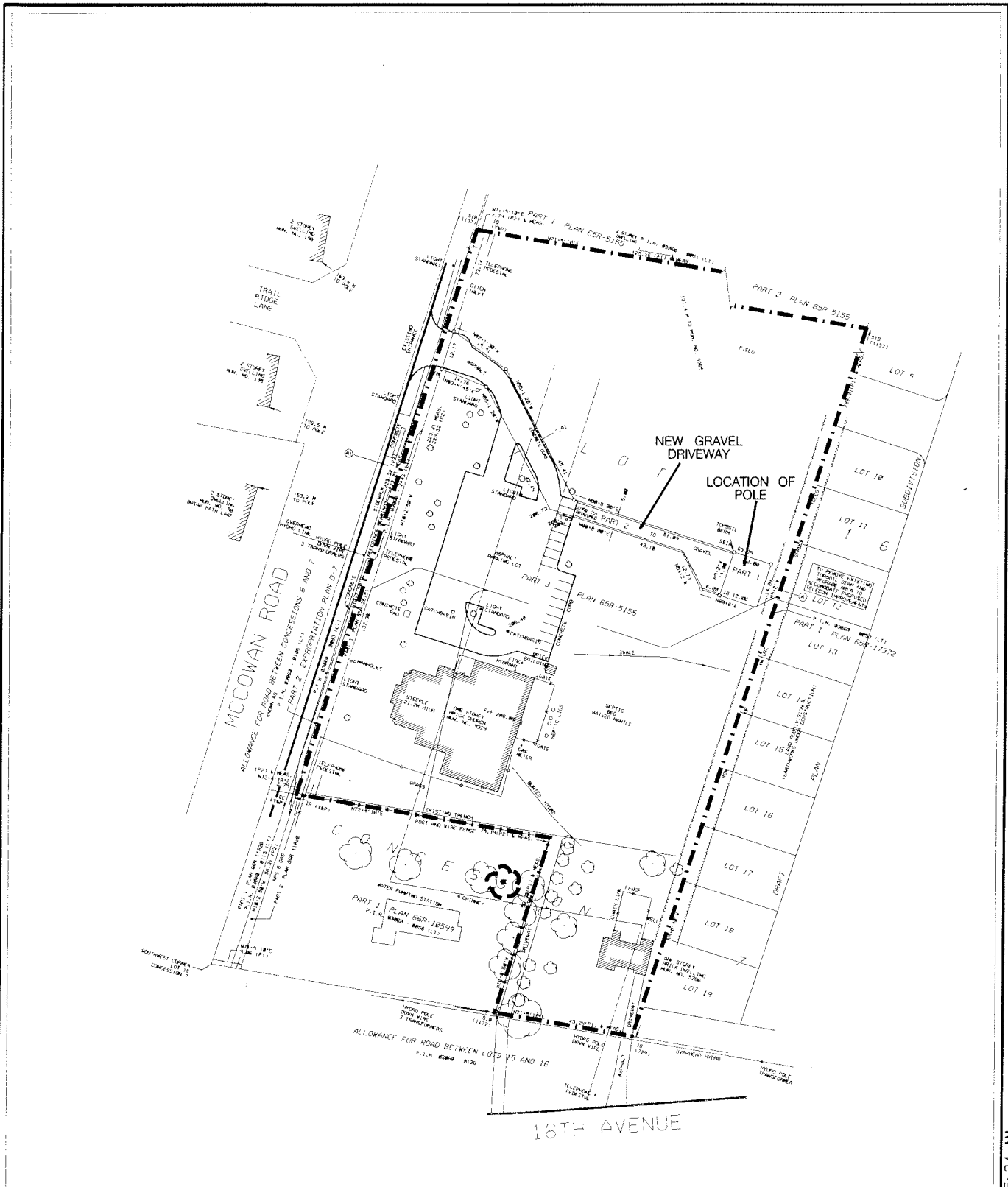
DEVELOPMENT SERVICES COMMISSION

DWN BY: DD

CHK BY: SB

SCALE 1:

FIGURE No.3



# SITE PLAN

APPLICANT: ROGERS WIRELESS INC.  
9329 McCOWAN ROAD

FILE No: SC05020638(SB)

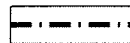


DEVELOPMENT SERVICES COMMISSION

DWN BY: DD

CHK BY: SB

SCALE 1:



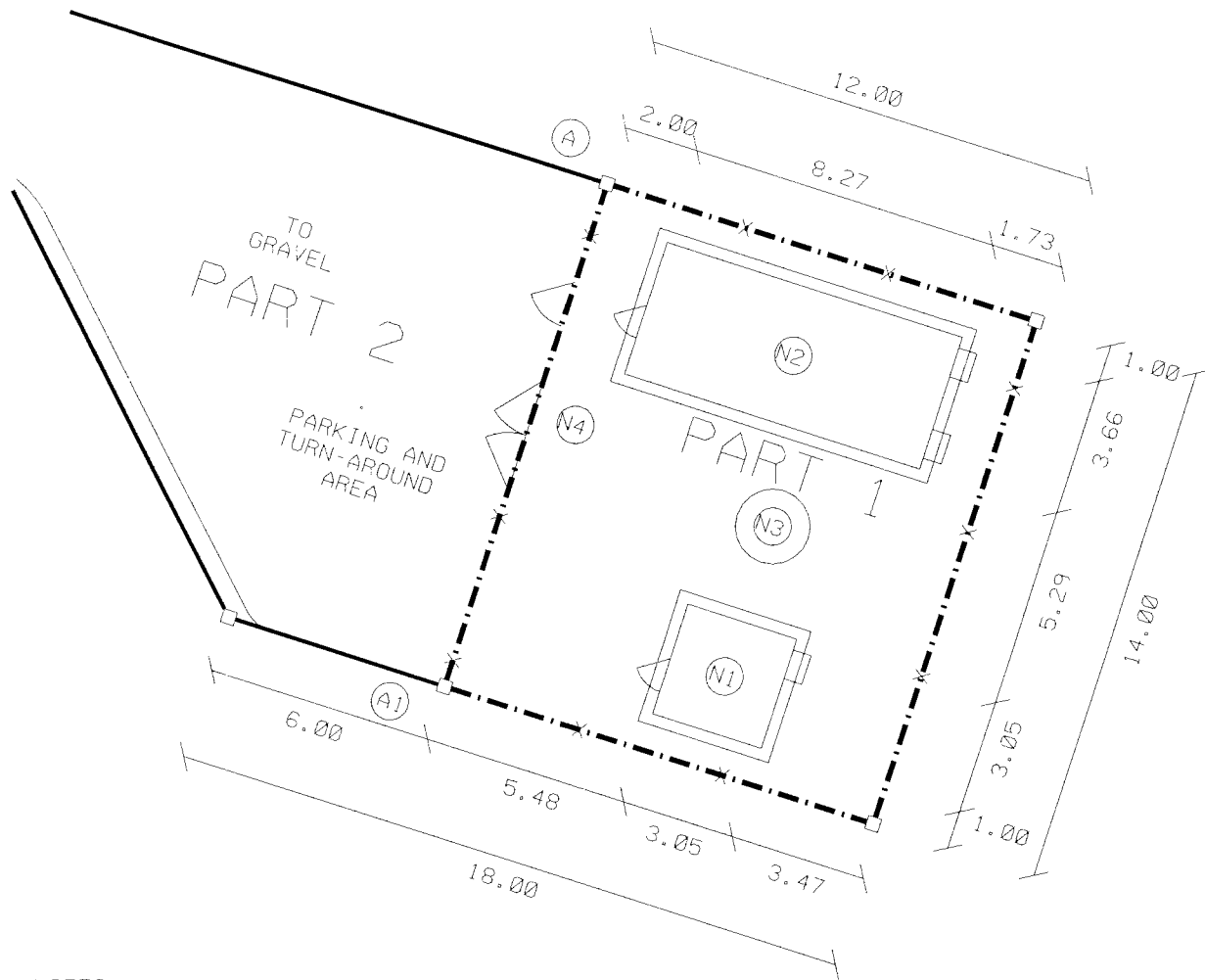
SUBJECT LANDS

DATE: 100507

FIGURE No. 4



SC05020638.dgn 19/10/2007 9:25:34 AM



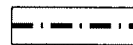
NOTES

- (N1) PROPOSED ROGERS WIRELESS EQUIPMENT SHELTER
- (N2) PROPOSED TELUS MOBILITY EQUIPMENT SHELTER
- (N3) PROPOSED 35M HIGH STEEL/FIBREGLASS FLAGPOLE ON CAST IN PLACE REINFORCED CONCRETE CAISSON
- (N4) PROPOSED 2.4 M HIGH PRESSURE TREATED WOOD FENCE (0.025 X 0.15M)

# PROPOSED COMPOUND LAYOUT

APPLICANT: ROGERS WIRELESS INC.  
9329 McCOWAN ROAD

FILE No: SC05020638(SB)

 SUBJECT LANDS

DATE: 100507



DEVELOPMENT SERVICES COMMISSION

DWN BY: DD

CHK BY: SB

SCALE 1:

FIGURE No.5



SC05020638.dgn 11/10/2007 12:26:54 PM