

# Milne Park Pathway Development Review

Development Services Committee  
October 21, 2008

# MULTI-USE PATHWAY UPDATE



Cycling Master Plan  
(2007)

Figure 2-6  
Draft Routes by  
Facility Type

## Legend

- Municipal Boundary
- Existing trail underpass
- Gateway to existing or proposed Municipal bike networks
- Roads
- Trails
- Railway
- Airport runway
- Park and Open Space
- Schools
- Hydro corridor
- High school
- Elementary school
- Community Centre
- Library
- Go Station

## Cycling Network

- Existing**
- Existing Signed-only Route
  - Existing Bike Lane

- Proposed**
- Paved Shoulder Bikeway
  - Signed-only Route
  - Bike Lane\*
  - Off Road (Boulevard Trail)
  - Trail in Utility/Greenway Corridor

Note:  
All Off-Road trail alignments outside of road rights-of-way to be confirmed through Town's Recreational Trail and Pathway Study.  
\* The proposed bike facility on Steeles Ave. falls under the jurisdiction of the City of Toronto and is displayed for information purpose only.

Draft

April, 2007



1. Major Mackenzie

2. Donald Cousens  
Parkway

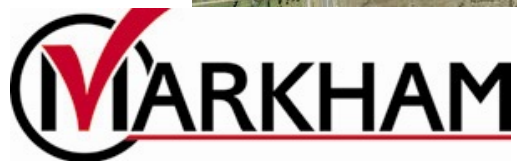
3. Milne Park

**\$4.5 million Municipal Infrastructure Investment Initiative**

0 0.45 0.9 1.8 2.7 3.6  
Km



### 3. Milne Conservation Area (Markham Rd. to McCowan Rd.)



# Overview

- Project identified in Pathways and Trails Master Plan and funded through Provincial Municipal Infrastructure Investment Initiative grant
- Where possible existing pathway through Milne Conservation Area will be used
- Crushed limestone surface treatment is proposed
- Meeting with Milne Park Conservation Association held on June 26, 2008 to inform them of the pathway plan and to work with them to determine design options

# Resident Concerns

- Minimize impact to vegetation and habitat
- Asphalt surface treatment not desired
- New openings to park from street network not desired
- Will attract more visitors to the conservation area
- Conflicts between pedestrians and cyclists

# TRCA Considerations

- Minimize impact to vegetation and habitat
- Avoid steep slopes
- Minimum distances to private property and water courses
- Minimize impact to grade and stream flows
- Project to comply with 1982 Milne Conservation Area management agreement, i.e. TRCA approval

# Pathway Alignment Options

- 4 (four) preliminary options have emerged based on field surveys and site visits
- TRCA currently reviewing all 4 (four) options
- Staff wish to review the 4 (four) pathway alignment options with Council before October 29 open house with stakeholders and residents





PHOTO 1





PHOTO 2









## Option 1

- Use existing road network to avoid environmentally sensitive areas
- Open an entrance to Banfield Ave.
- Use existing opening at Willowgate Dr.
- Review of existing bridge status

### COST

\$450,000





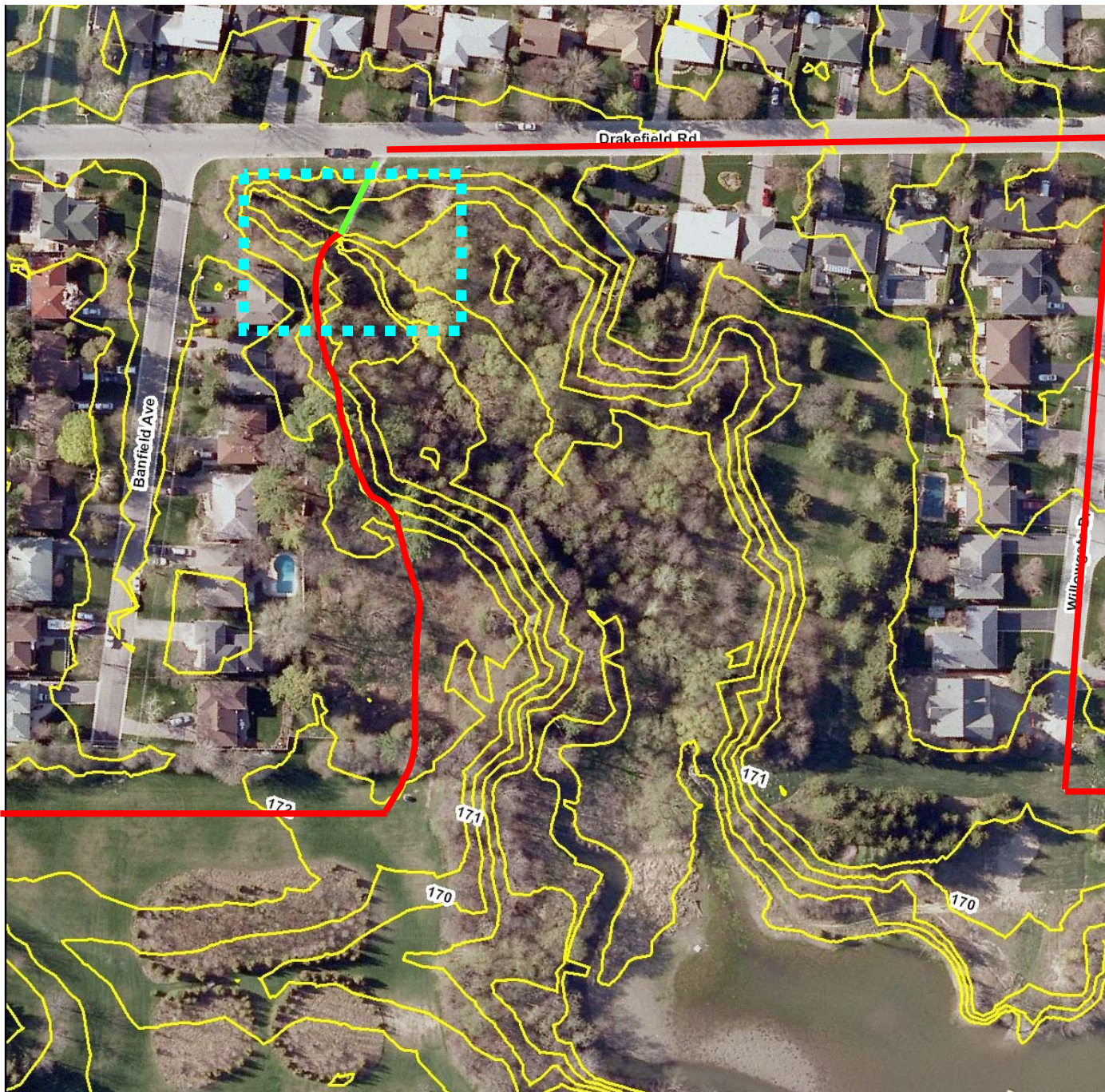


## Option 2

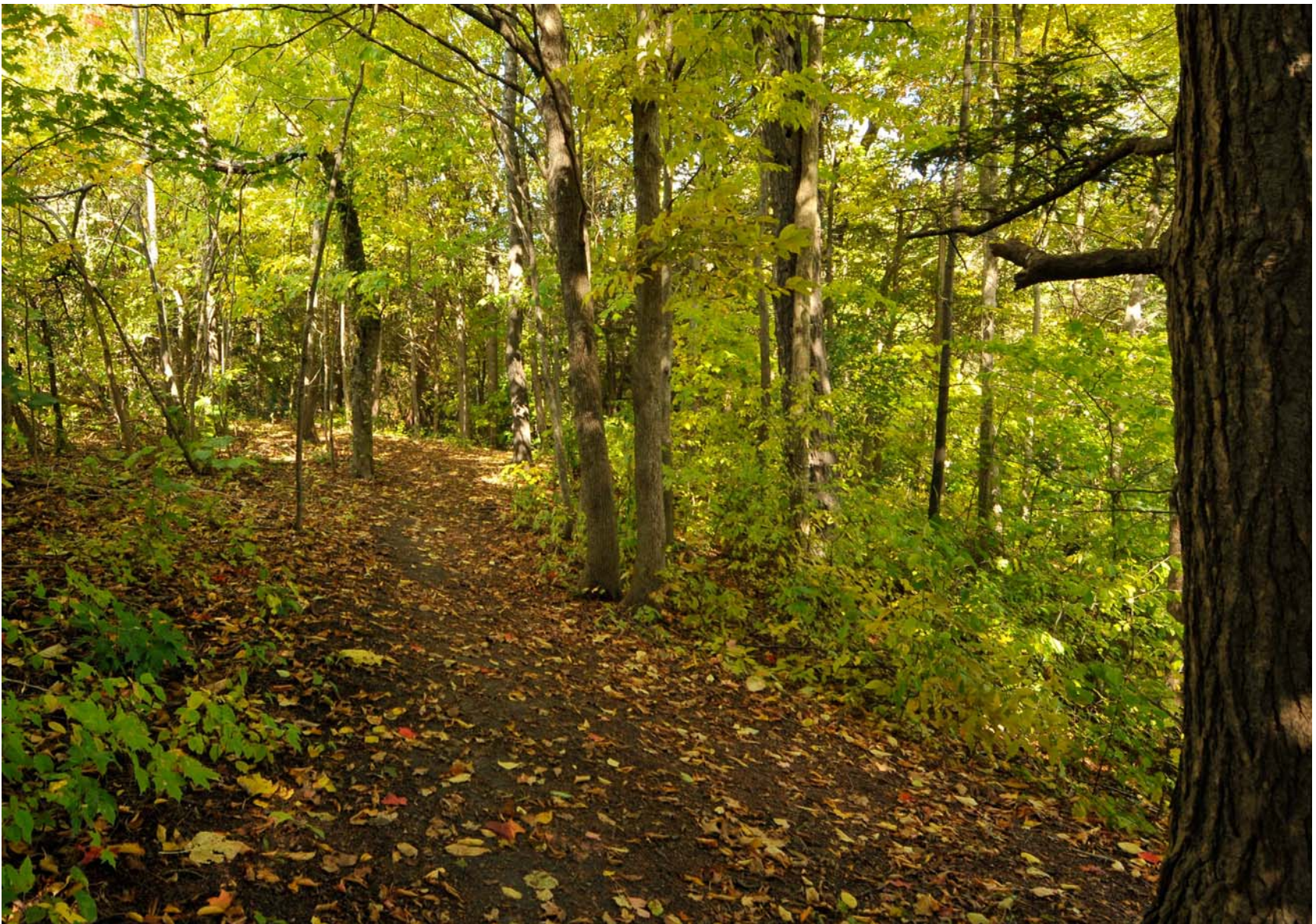
- Use existing road network to avoid part of the environmentally sensitive areas
- Use existing opening at Willowgate Dr.
- Replace existing bridge

### COST

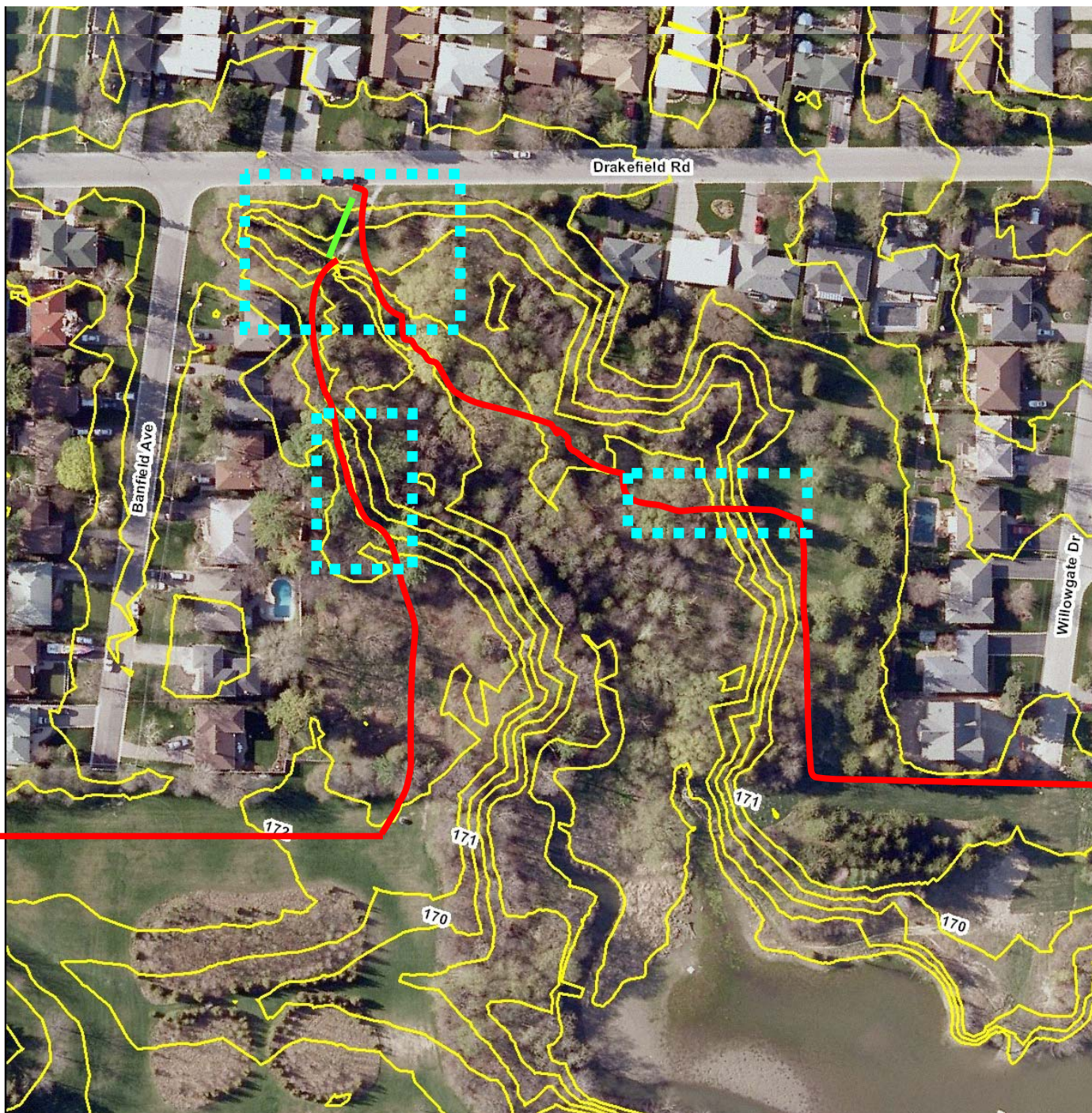
\$675,000











## Option 3

- Pathway through environmentally sensitive areas
- Replace existing bridge
- Build two (2) boardwalks to overcome steep slopes

### COST

\$970,000















## Option 4

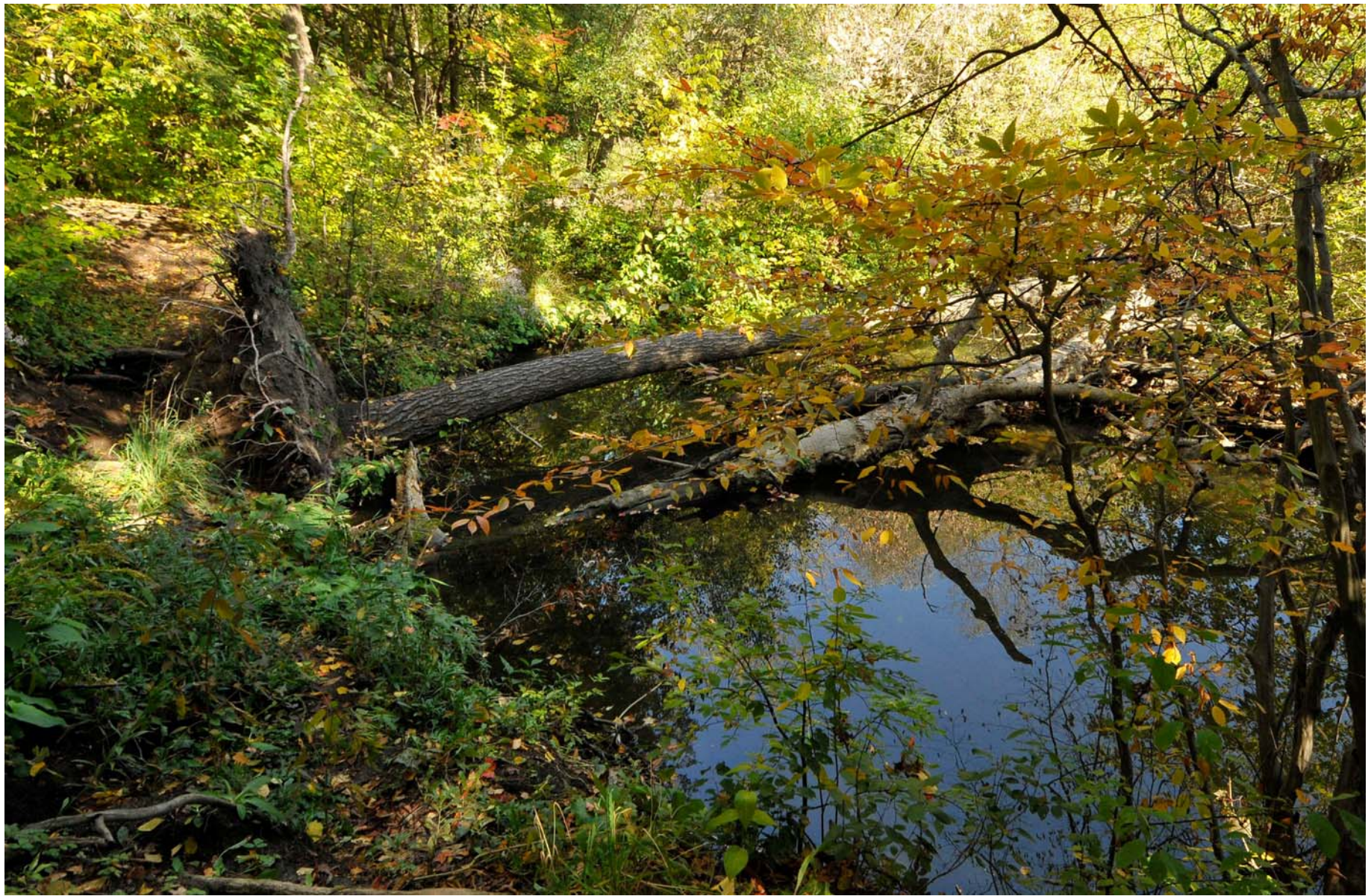
- Avoid environmentally sensitive areas
- Review status of existing bridge
- Install a suspension bridge
- Pathway through park and not on road

### COST

\$1,720,000

















# Suspension Bridge in Souris Manitoba





# Next Steps - Milne

- Receive TRCA comments on 4 (four) options
- Present options at public and stakeholder open house on October 29, 2008
- Report to Council on preferred option
- Submit plan to TRCA for review and approval
- Public open house to present preferred option
- TRCA Board to review and approve project
- Tender pathway construction
- General Committee award report
- Expected completion late fall 2009