



Collections Building
October 06, 2008

BACKGROUND

Council Approved May 13, 2008 Report

- Schematic Design
- 16,000 sq. ft.
- LEED Silver
- Approved architect to proceed to final design

BACKGROUND

Council Approved June 24, 2008 Report

- Council approved presentation by The Ventin Group
- Staff to report back on options to enhance the Main Entrance

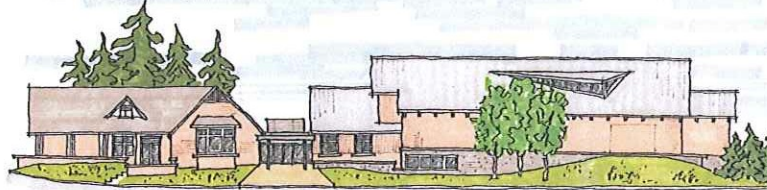
BACKGROUND

Cost Summary

• CONSTRUCTION	\$7,300,000
• FF&E	\$840,000
• Internal Costs	<u>\$1,018,000</u>
• TOTAL	\$9,158,000

Design Direction

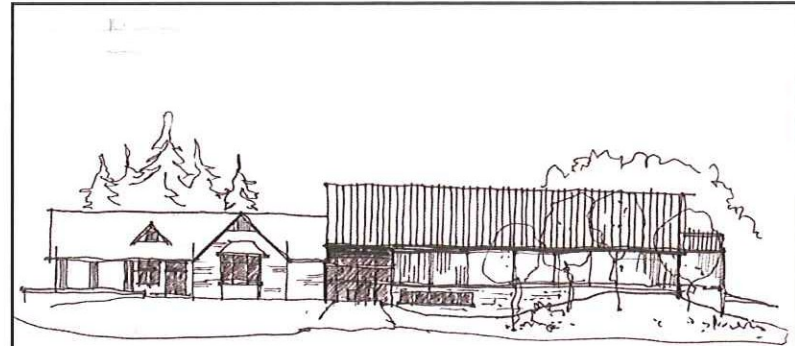
- No daylight in Collections Building
- Enhance presence on Hwy 48
- Develop entrance as a focus
- Animate the façade
- Create gathering space



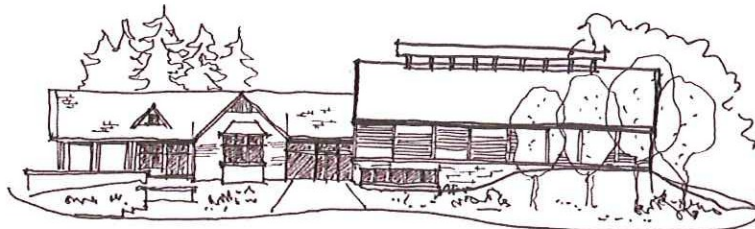
Design Concept as of June 2008

The Ventin Group Architects

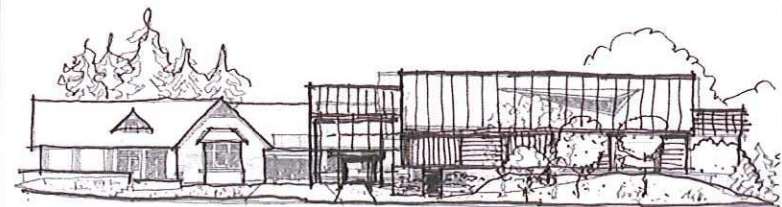
COLLECTIONS BUILDING
EAST ELEVATION SKETCH
JAN 12/08



The Ventin Group Architects



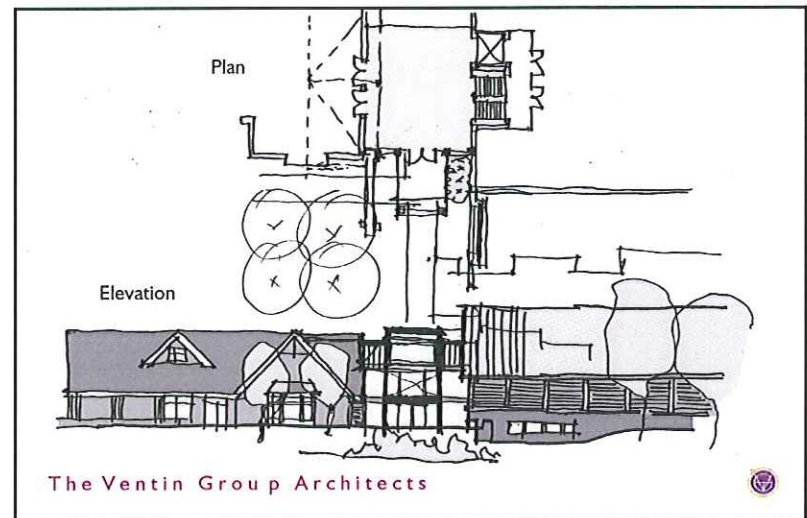
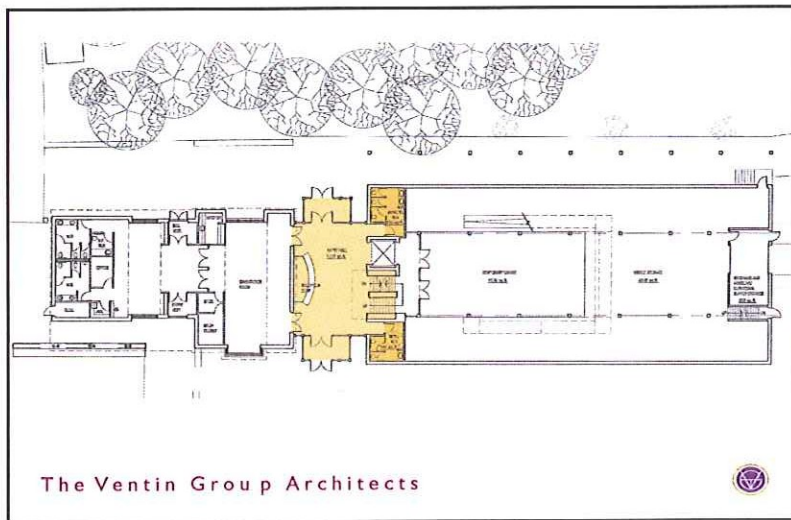
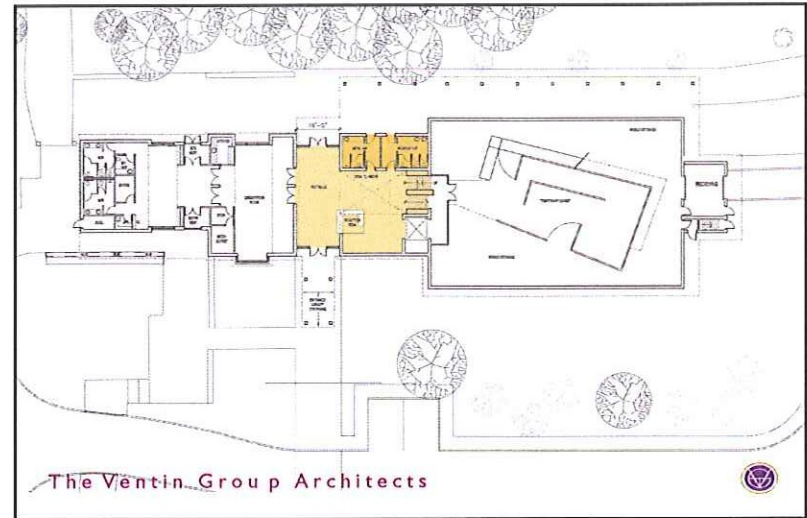
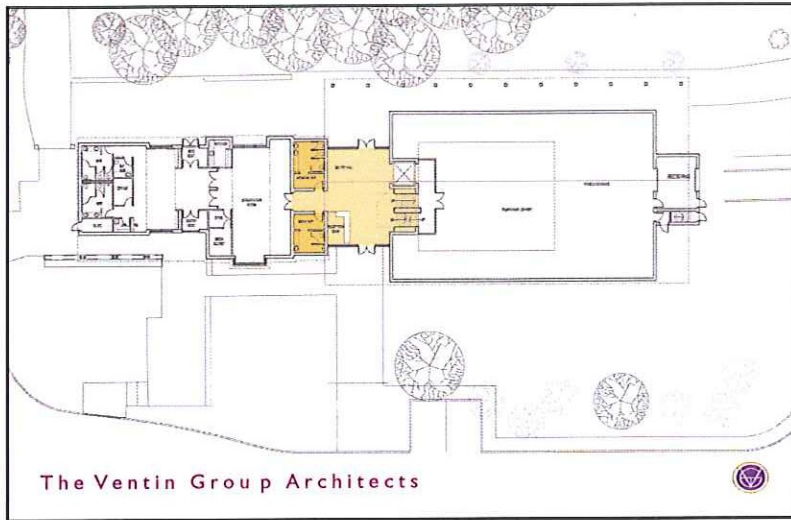
The Ventin Group Architects



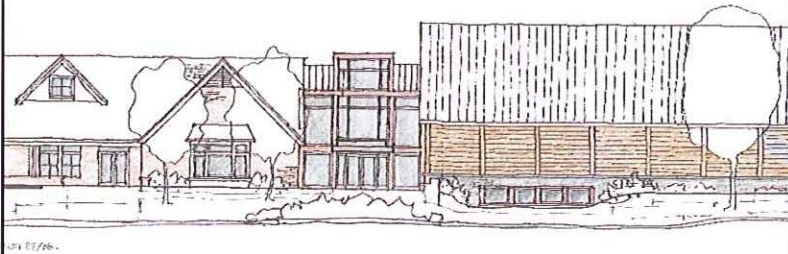
The Ventin Group Architects

COLLECTIONS BUILDING
EAST ELEVATION SKETCH
JAN 12/08





East Elevation



The Ventin Group Architects



Birdseye view from south
Design as of August 2008



The Ventin Group Architects



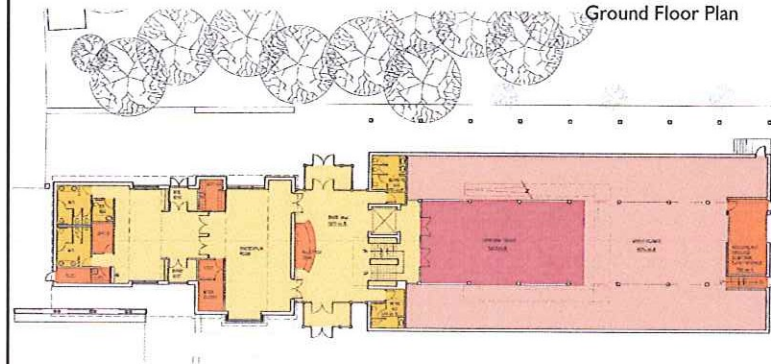
View from south at rear
Design as of August 2008



The Ventin Group Architects

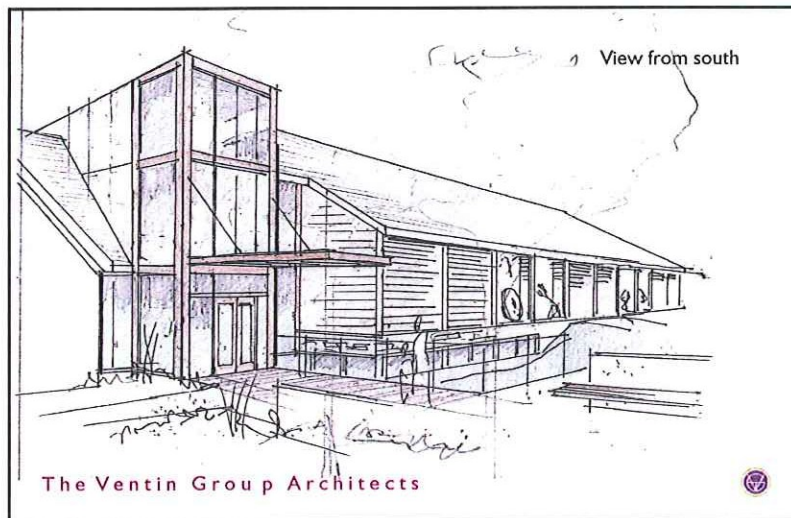
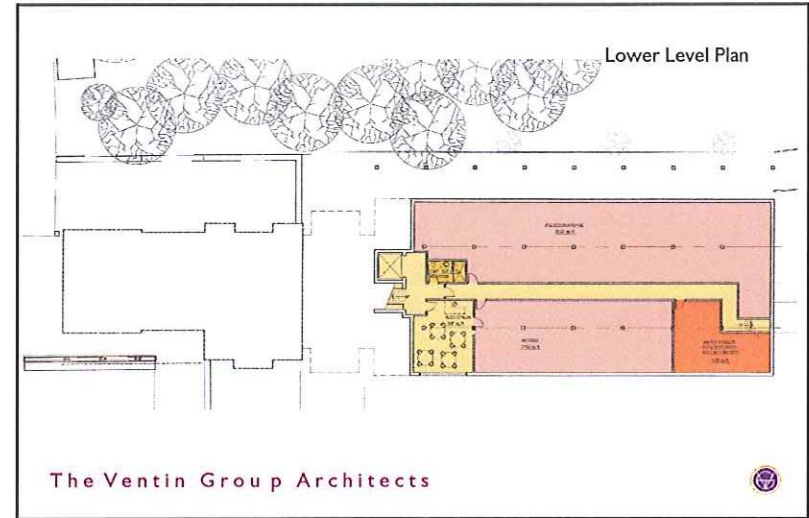
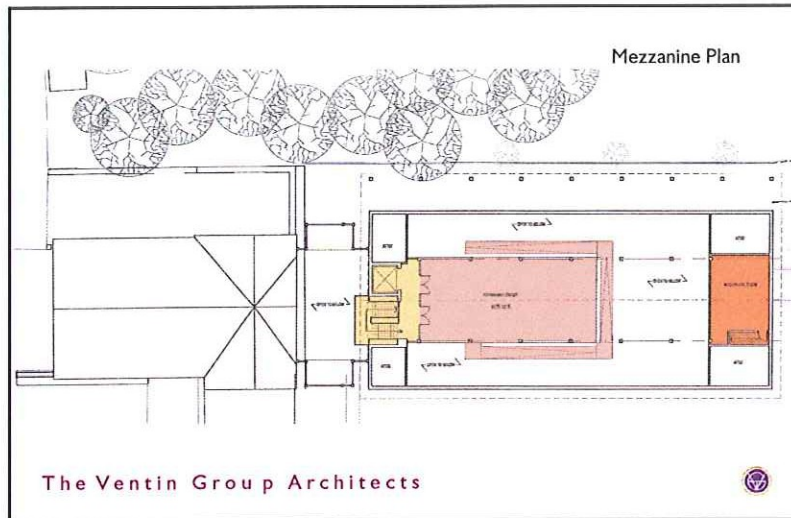


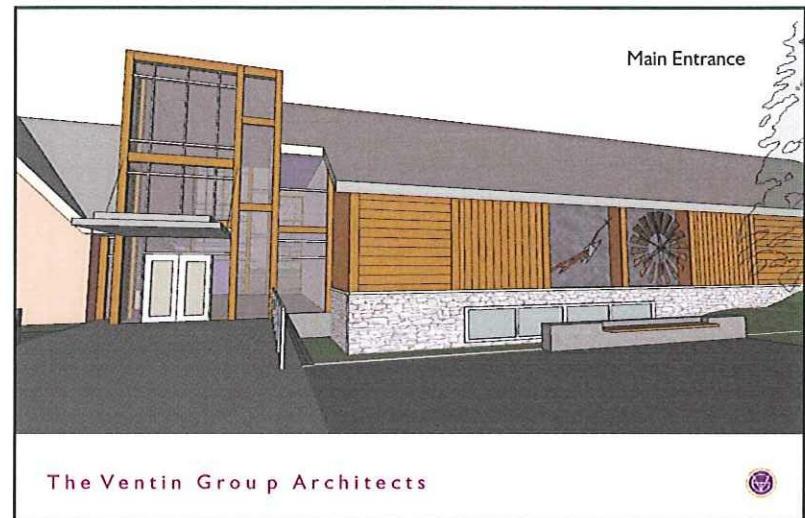
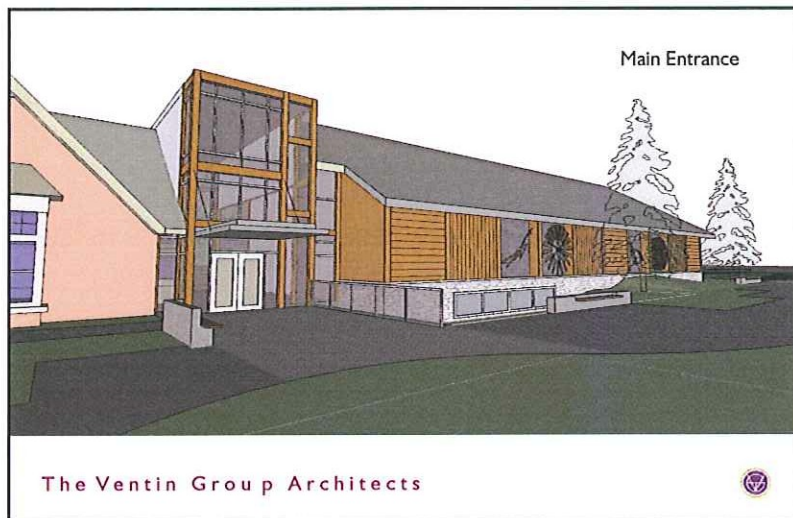
Ground Floor Plan



The Ventin Group Architects







View from north



The Ventin Group Architects



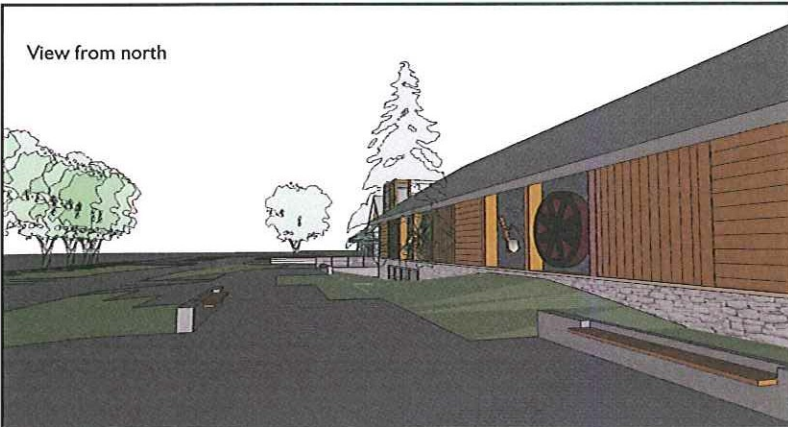
View from north



The Ventin Group Architects



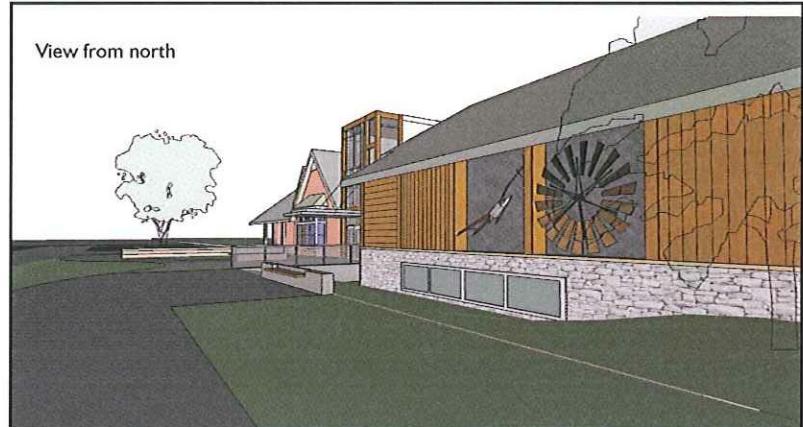
View from north



The Ventin Group Architects



View from north



The Ventin Group Architects



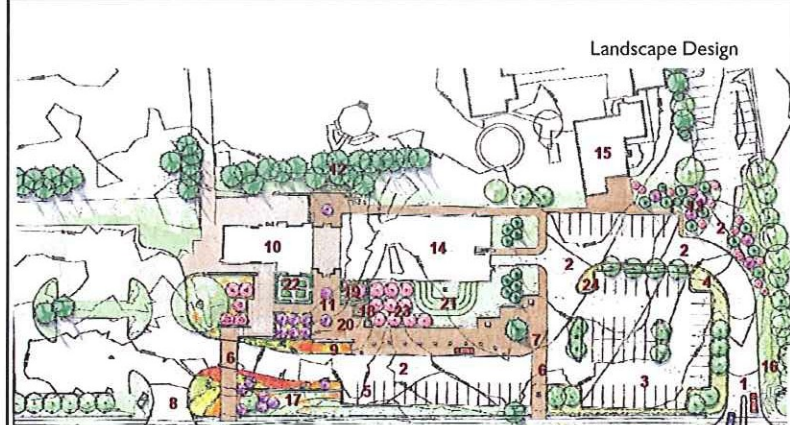
View from north



The Ventin Group Architects



Landscape Design



The Ventin Group Architects



Collections Building

Finishes

Exterior

- Natural materials: wood with stone base
- Metal roof
- Windows for natural light and views where appropriate

Interior

- Class "A" museum environment with fire suppression sprinklers
- Ceiling with wood treatment such as at beams
- Dry wall and plywood interior walls with some wood trim
- Floors with carpet, tile, and polished concrete in gallery spaces
- Built-in millwork such as benches, counters, cabinets etc.

The Ventin Group Architects



The Ventin Group Architects





The Ventin Group Architects



NEXT STEPS

- Public Information Meeting - October 15th
- Presentation to Committee:
Outcome of Public Meeting - October 20th
- Presentation of Final Design,
Landscaping and Sundial to
General Committee - November
- Site Plan Application - November
- Contractor Prequalification - November
- Building Permit Application - January 2009
- Tender - January 2009
- Council - Tender Award - March 2009
- Construction Start - March 2009

