

**EXPLANATORY NOTE**

**By-law 2009-48**

A By-law to amend By-law 2284-68, as amended

Ontario Realty Corporation  
2601 14<sup>th</sup> Avenue  
Concession 3, Part Lot 5, Plan 65R-29619

**LANDS AFFECTED**

The By-law applies to lands south of 14<sup>th</sup> Avenue, east of Highway 404, municipally known as 2601 14<sup>th</sup> Avenue.

**EXISTING ZONING**

The lands subject to this By-law are presently zoned Agriculture One (A1) under By-law 2284-68, as amended.

**PURPOSE AND EFFECT**

The purpose of this amendment is to delete the lands from Agriculture One (A1) under By-law 2284-68, as amended, so that the lands may be incorporated into By-law 28-82, as amended, under the Select Industrial and Limited Commercial (MC) zone. This will allow the lands to be developed with industrial/office uses.



## BY-LAW 2009-48

A By-law to amend Zoning By-law 2284-68, as amended

---

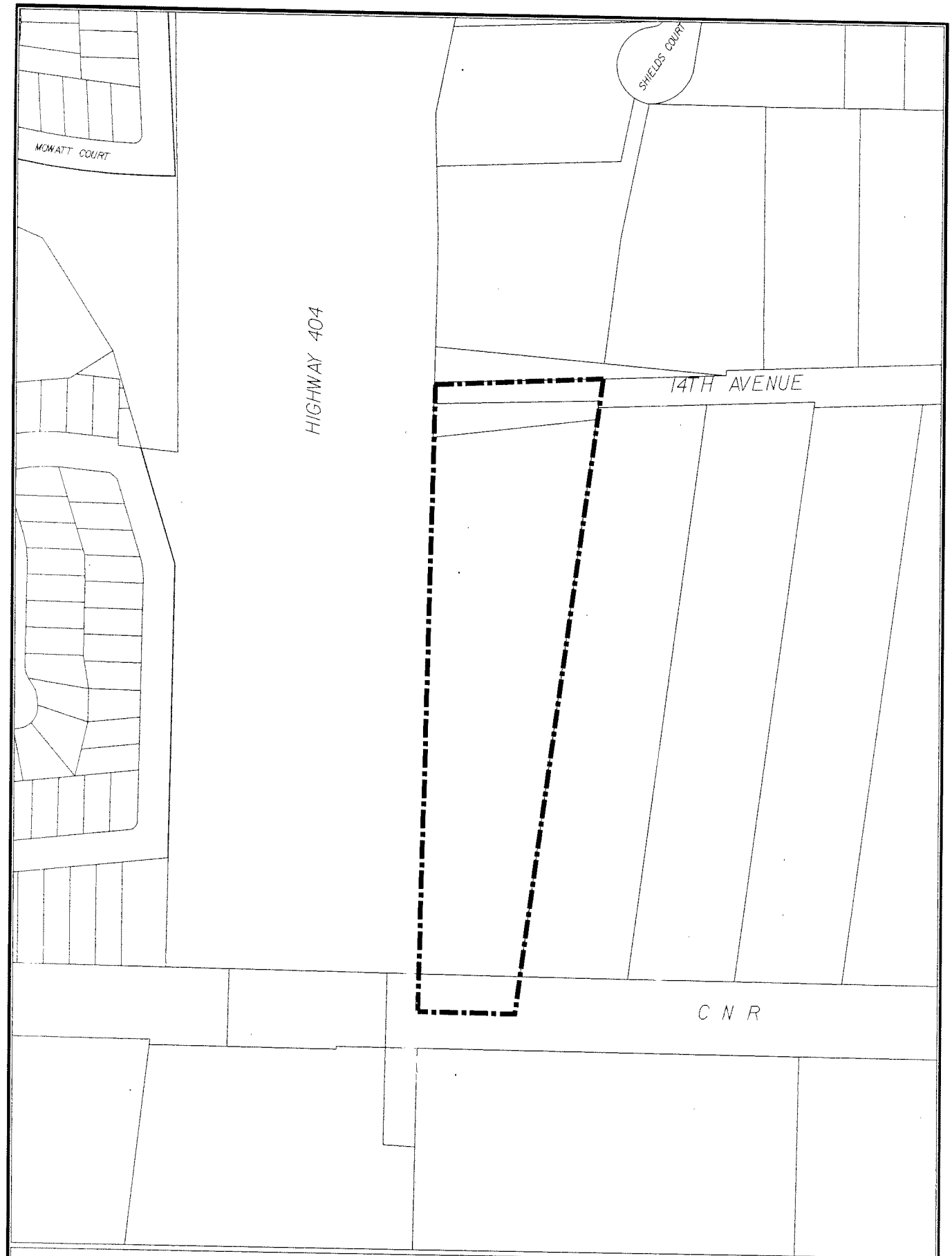
THE COUNCIL OF THE CORPORATION OF THE TOWN OF MARKHAM  
HEREBY ENACTS AS FOLLOWS:

1. By-law 2284-68, as amended, is hereby further amended by deleting the lands shown on Schedule 'A' attached hereto from the designated area of By-law 2284-68, as amended.
2. This By-law shall not come into effect until By-law 2009-49 amending By-law 28-82, as amended comes into effect and the lands, as shown on Schedule 'A' attached hereto, are incorporated into the designated area of By-law 28-82, as amended.
3. All other provisions of By-law 2284-68, as amended, not inconsistent with the provisions of the By-law shall continue to apply.

READ A FIRST, SECOND, AND THIRD TIME AND PASSED THIS  
12<sup>TH</sup> DAY OF MAY, 2009.

KIMBERLEY KITTERINGHAM  
TOWN CLERK

FRANK SCARPITTI  
MAYOR



DEVELOPMENT SERVICES COMMISSION

# A BY-LAW TO AMEND BY-LAW 2284-68



BOUNDARY OF AREA COVERED BY THIS BY-LAW



THIS IS SCHEDULE 'A' TO BY-LAW 2009-48  
PASSED THIS 12TH DAY MAY, 2009

*John Saeed*  
MAYOR  
*[Signature]*  
CLERK

NOTE: 1) DIMENSIONS ARE IN METRES  
2) REFERENCE SHOULD BE MADE TO  
THE ORIGINAL BY-LAW LODGED IN  
THE OFFICE OF THE CLERK

SCALE 1: