



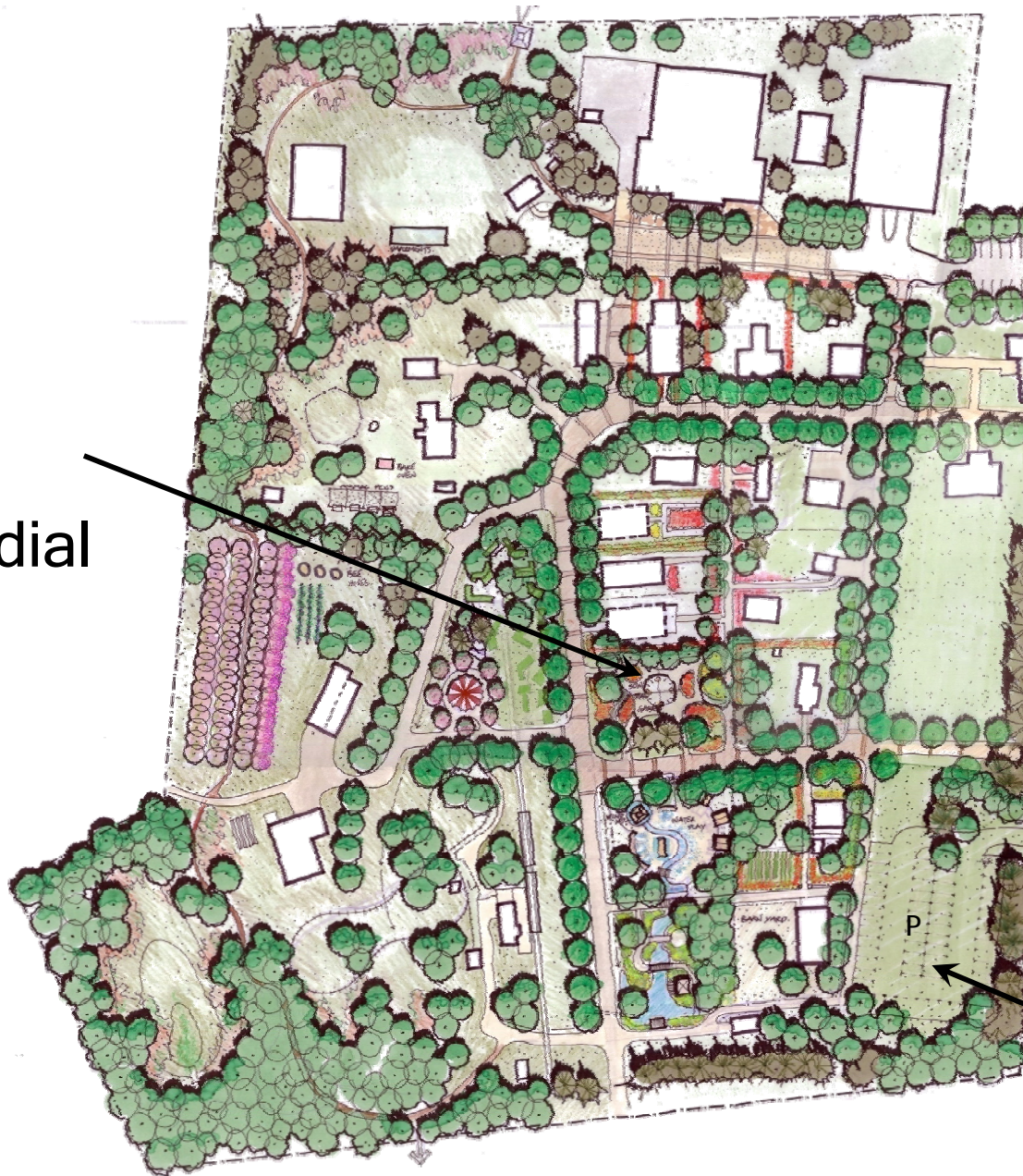
Collections Building
February 24, 2009

Purpose of Presentation

The purpose of this presentation is to provide preliminary information regarding the site plan application for a proposed addition to the Markham Museum Visitor Centre.



undial



taff Parking

ublic and Staff
Entrance

ublic Parking

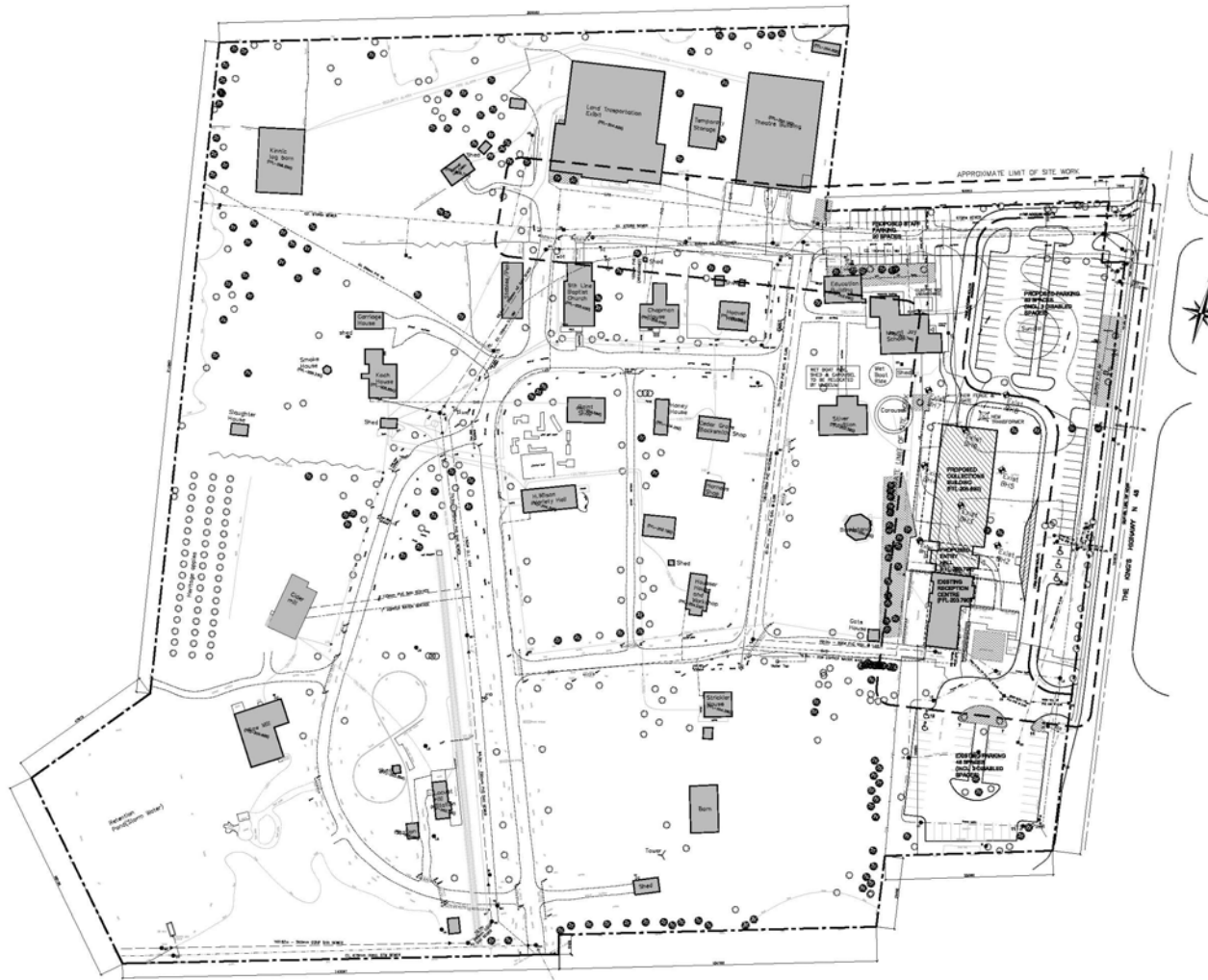
ublic Drop-off
us Drop-off

ublic Entry

us and Group
Parking

verflow Parking





Site Plan

The Ventin Group Architects

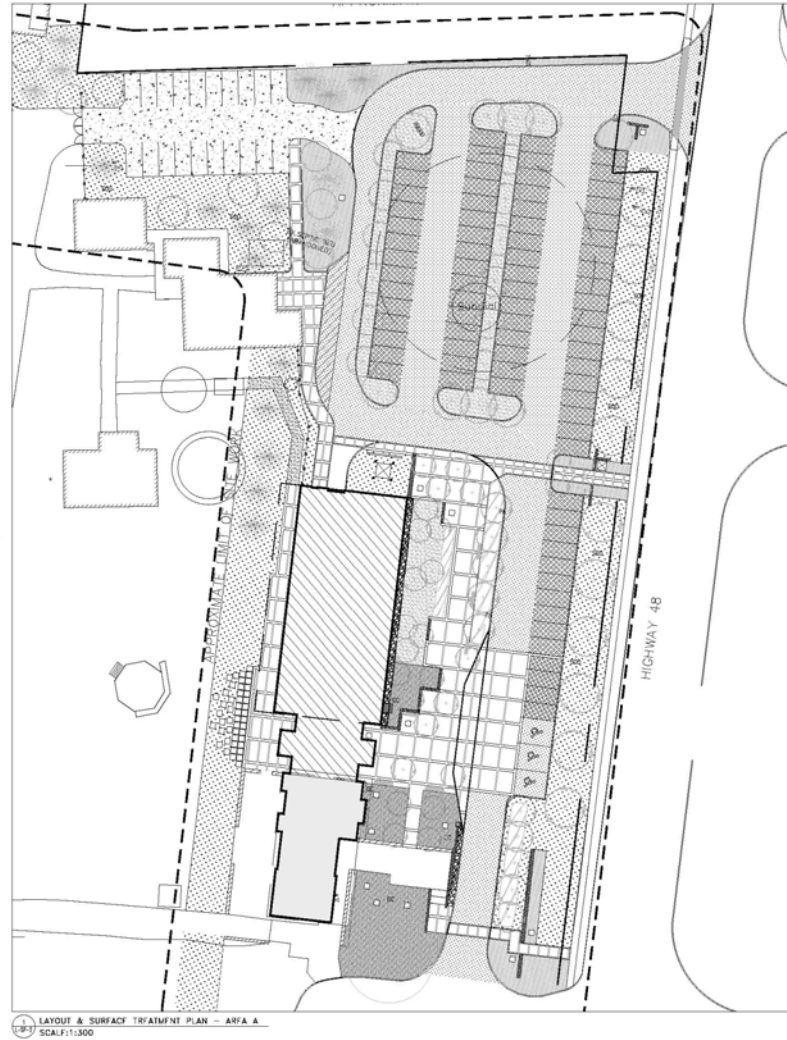
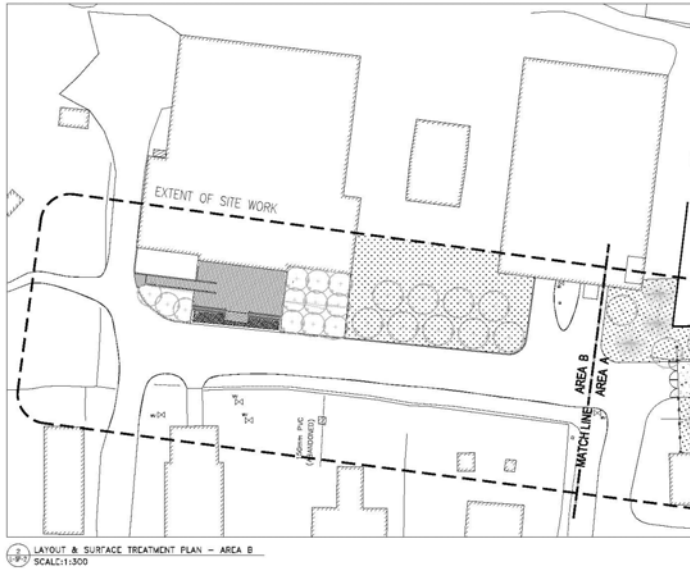




Site Plan

The Ventin Group Architects





Site Plan

The Ventin Group Architects

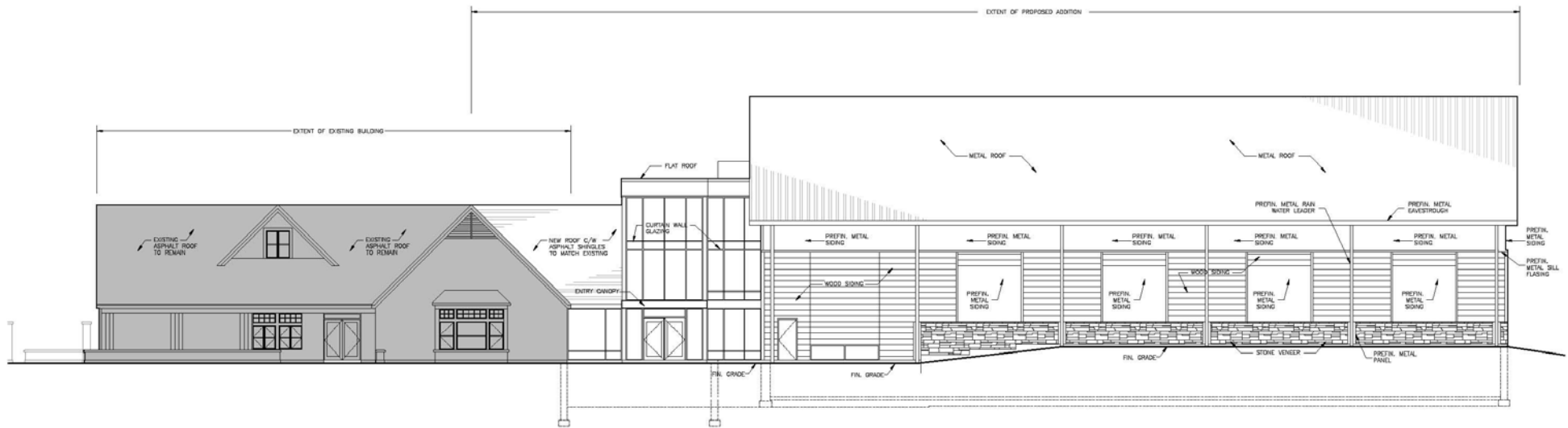




Elevations

The Ventin Group Architects





EAST ELEVATION

East Elevation

The Ventin Group Architects





Main Entrance

The Ventin Group Architects



Next Steps

Development Services staff will finalize their review and evaluation of the proposed site plan, building elevations and landscape plan and prepare a recommendation report for consideration by the Development Services Committee.

