

UPDATE

Environmental Policy Review and Consolidation Study

Development Services Committee

March 31, 2009

BACKGROUND

- **EPRC Study is a Natural Heritage System study for the entire Town of Markham including the Greenbelt Plan conformity requirements**
- **The Study is being conducted by the team led by Schollen & Company Inc. with some components of the study being undertaken by Town staff**
- **EPRC Study is a component of the Growth Management Strategy and a strategic priority in the Building Markham's Future Together program**
- **EPRC supports the Town's environment first direction**

STUDY PROCESS

- June 2007 Public Information Meeting
- December 2008 Public Information Meeting
- December 2008 Stakeholder One-on-One Meetings
- February 2009 Technical Advisory Group Meeting
- ▶ **March 2009 Development Services Committee**
- April 2009 Release Revised Draft Mapping and Draft Policies
- April – May Stakeholder consultations
- June/Fall 2009 Final Report and Recommendations

MAPPING APPROACH

- **Town-wide Natural Heritage Network and Greenway System**
- **Greenbelt conformity requirements**
- **Hamlet boundary review (Greenbelt Plan)**
- **Special Policy Area (Schedule A Land Uses)**

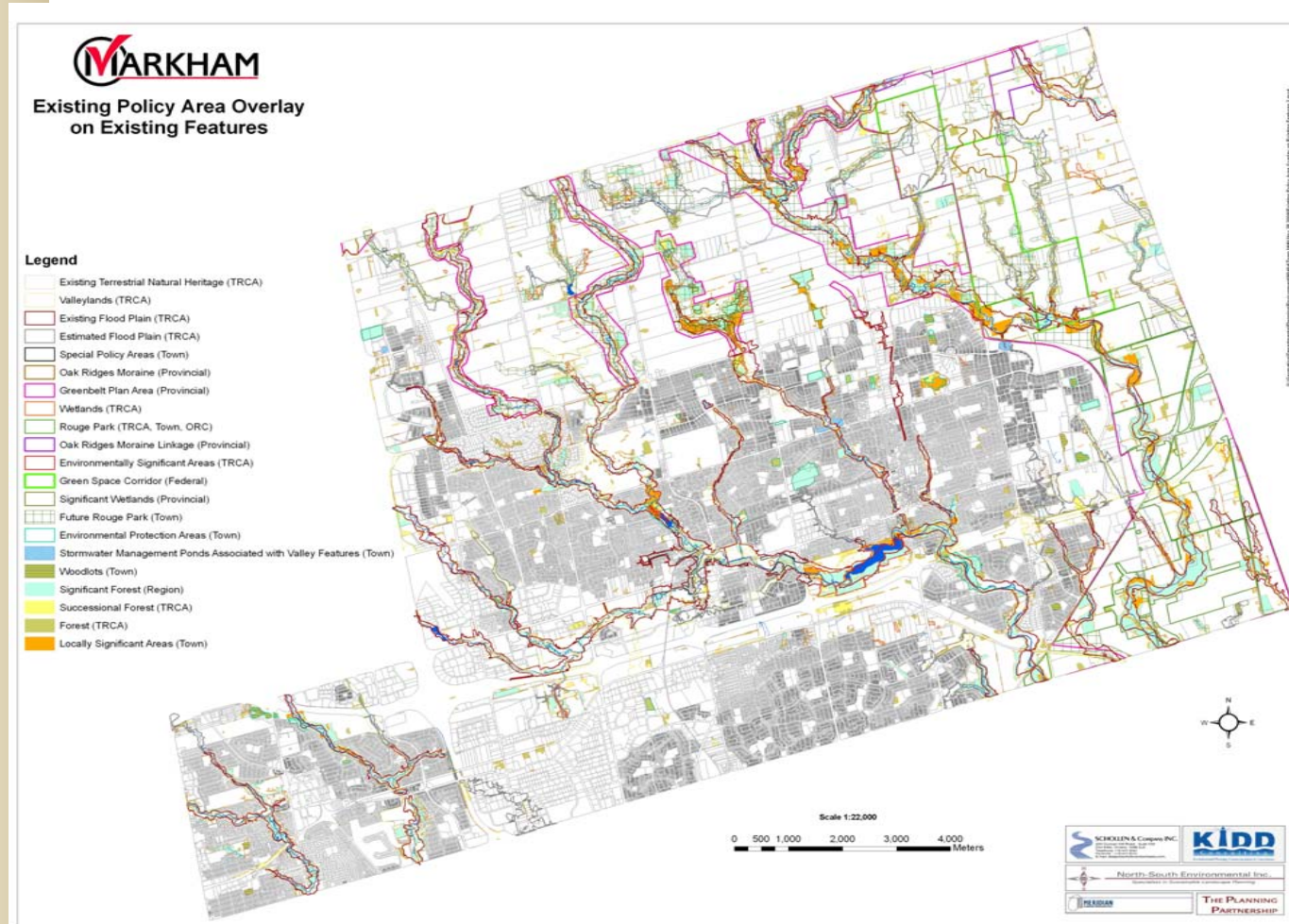
POLICY APPROACH

- **NATURAL HERITAGE NETWORK**
- + **NATURAL HERITAGE NETWORK**
(lands identified for protection in core areas to address biodiversity objectives, existing protected natural features and the ecological connections which are not covered by applicable policy)
- + **GREENBELT AGRICULTURE**
(lands in the Greenbelt which are not identified as part of the Natural Heritage Network- coordinated with the Town's Agricultural Assessment)
- = **GREENWAY SYSTEM**

MAPPING LAYERS

- flood plain lands, watercourse and stream corridors
- wetlands meeting Provincial or TRCA criteria
- woodlands meeting Provincial, Regional, TRCA and Town including zoned woodlots
- meadows that are contiguous with a valley corridor or other listed feature
- naturalized swm ponds that are contiguous with a valley corridor or other listed feature
- habitat for Vulnerable Threatened & Endangered (VTE) species and species of concern ranked by the TRCA as L1 to L3 that are contiguous with a valley corridor or other listed feature
- Environmentally Significant Areas identified by the TRCA
- Locally Significant Areas identified by the Town
- Environmental Protection Areas identified by the Town
- Rouge North Management Lands delineated by the Town (OPA N. 140)
- Key Natural Heritage Features and Key Hydrological Features identified by the Province on Greenbelt lands

FEATURES AND POLICY LAYERS



INPUT TO DATE

50 landowner and group submissions received to date

Issues related to:

- **mapping adjustments to reflect existing planning approvals (predominantly urban area)**
- **justification for and location of ecological corridors and enhancement areas**
- **protection of agricultural lands**

MAPPING MODIFICATIONS

- 1. Urban Area Adjustments to reflect Council/TRCA planning approvals (LD)**
- 2. Greenbelt Agriculture lands to be confirmed with the TRCA/Rouge Park (LD)**
- 3. Enhancement Nodes and Enhancement Corridors (MS)**
- 4. Activity Multi-Use Linkage (MS)**



Environmental Policy Review and Consolidation Study

GREENWAY COMPONENTS

DRAFT

November 2008

Legend

Greenway System

Oak Ridges Moraine Planning District

Greenbelt Agriculture

Natural Heritage Network

Core Area - Enhancement Area

Ecological Corridor (Natural Heritage Network-Enhancement Area)

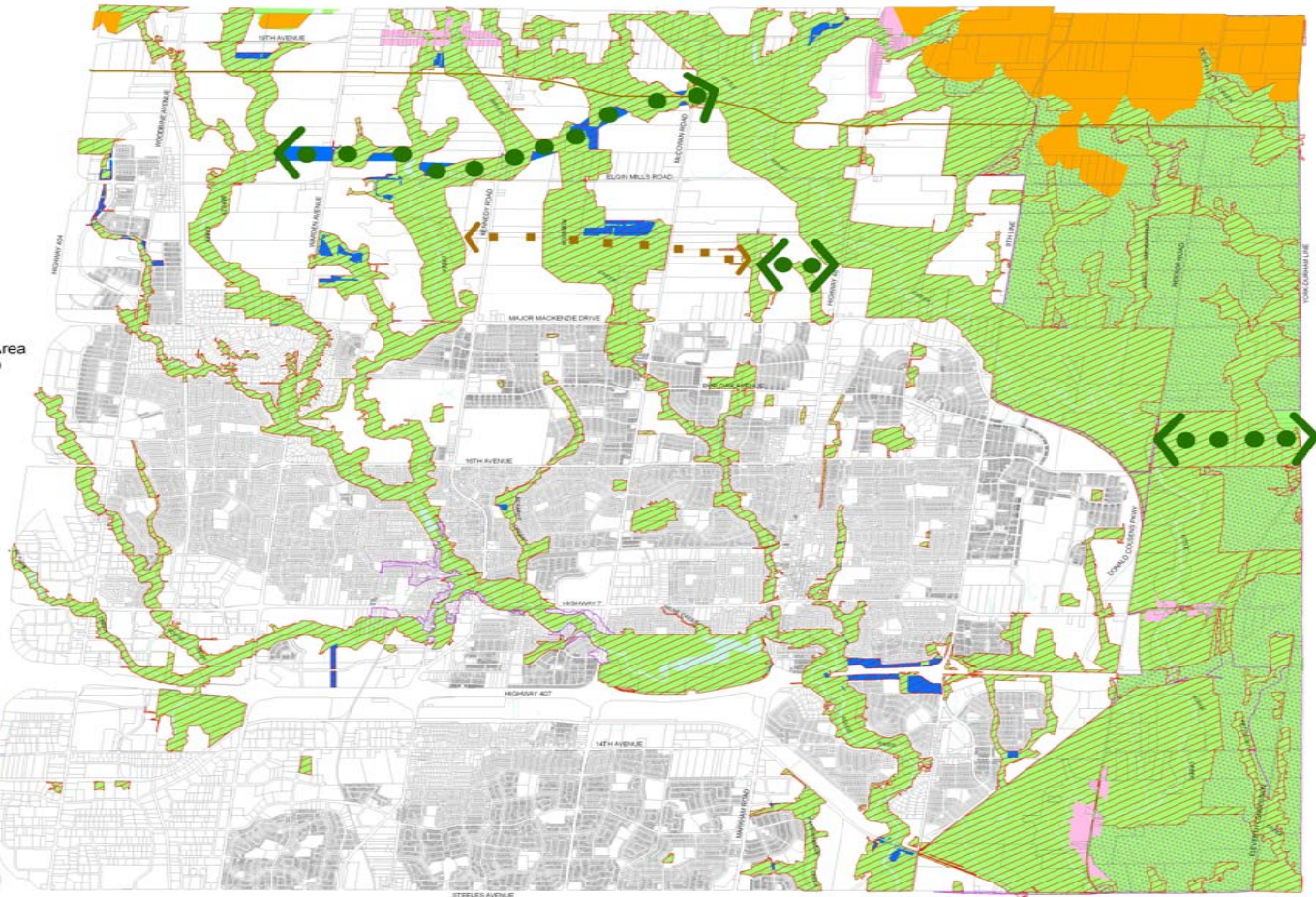
Activity (Multi-Use) Linkage

Proposed Hamlets (Subject to Hamlet Policies in the Official Plan)

Special Policy Area (Subject to Special Policy Area Policies in the Official Plan)

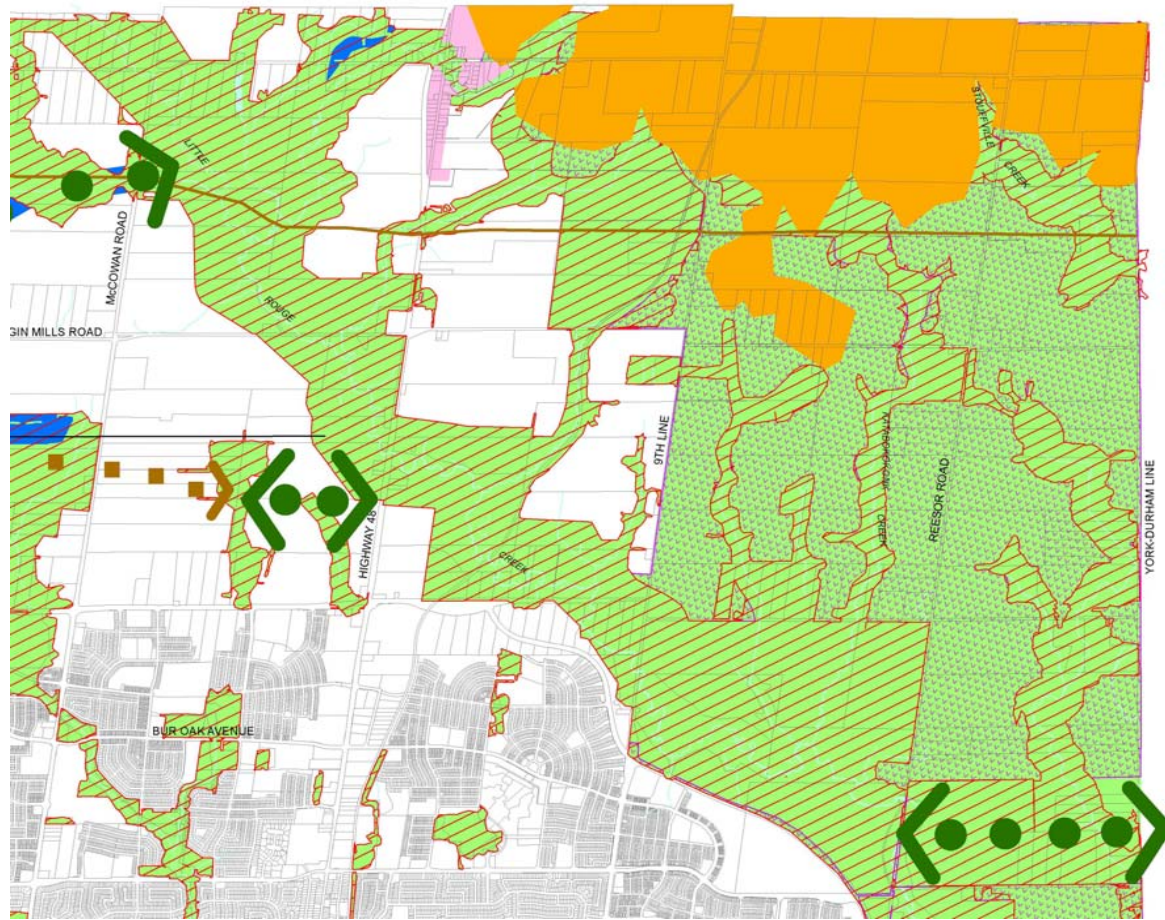
TransCanada Pipeline

Scale 1:20,000 (metres)
0 500 1,000 2,000 3,000 4,000 Meters



EPRC Study

Detailed Greenway Components (NE)



EPRC Study

Detailed Greenway Components (NW)



EPRC Study

Detailed Greenway Components (SC)



EPRC Study

Detailed Greenway Components (SE)



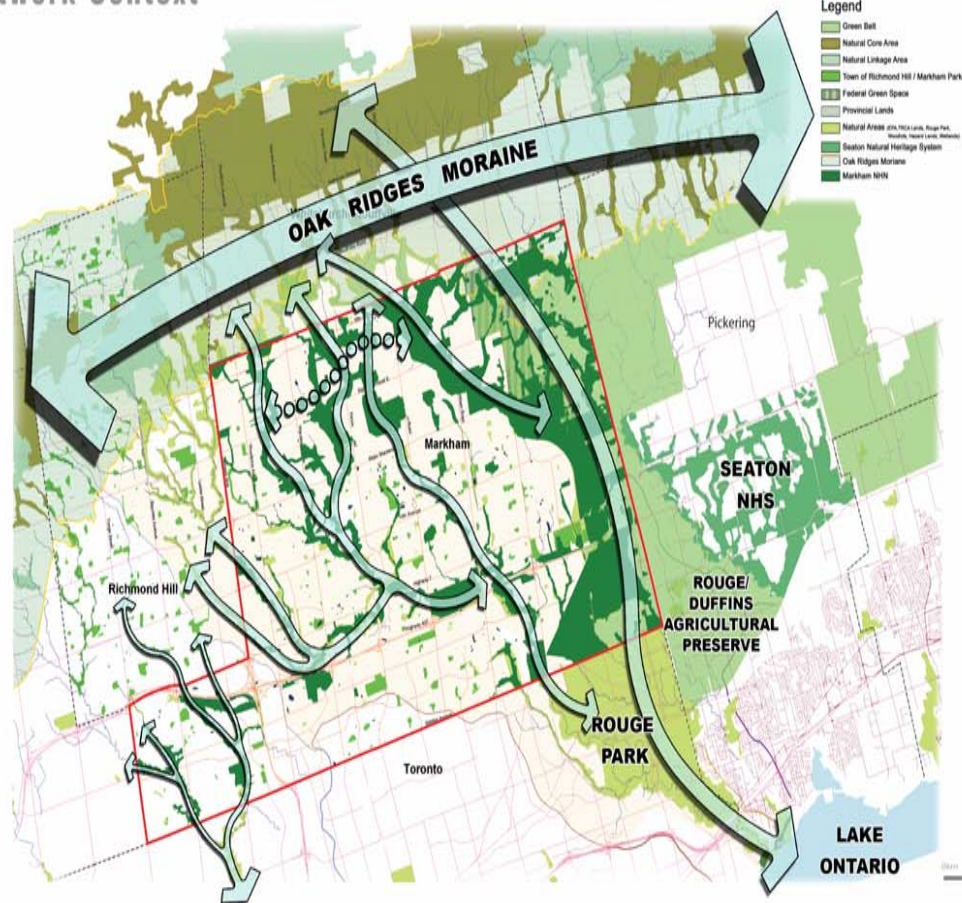
EPRC Study

Detailed Greenway Components (SW)



REGIONAL CONTEXT

Natural Heritage Network Context



HAMLETS

- **Greenbelt Conformity exercise provides a single one-time opportunity to modify/adjust Hamlet boundaries**
- **Review undertaken by Town staff**
- **Minor adjustments being recommended**

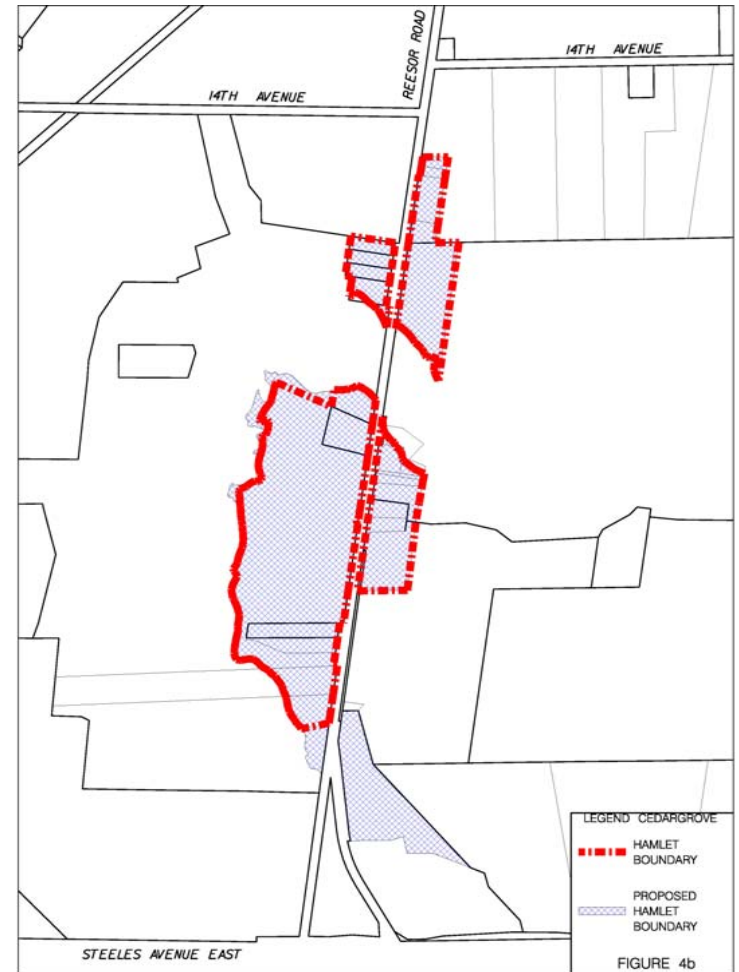
ALMIRA



- North expansion to include existing dwellings zoned R1
- East expansion to include dwelling unit (correction)
- Isolated triangle piece north of floodplain removed

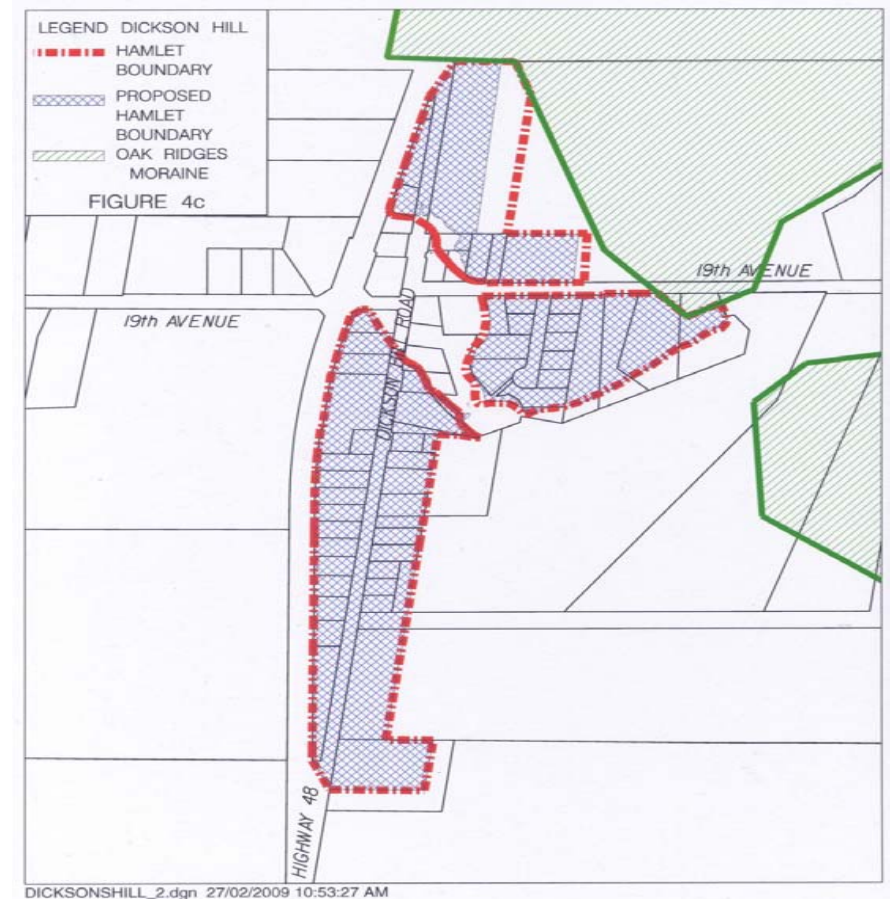
CEDAR GROVE

- Southern expansion to include existing Town owned dwellings (one heritage) on the east and lands adjacent to floodplain and boundary on the west
- Western boundary adjusted to match floodplain boundary

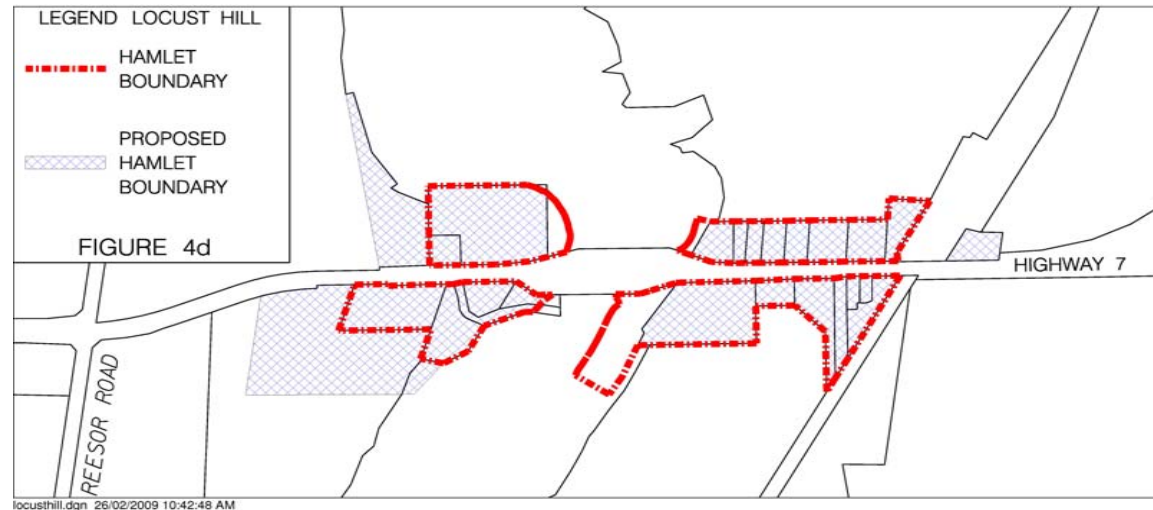


DICKSON HILL

- Eastern hamlet boundary reduced to reflect existing RRH zoning



LOCUST HILL



- **Western boundary expanded to include existing heritage properties to the north and RR4 zoned property to south (TRCA/ Rouge Park lands)**
- **Centre lands removed from Hamlet boundary (floodplain) and property boundary alignment**
- **Eastern boundary expanded to include existing heritage building**

SPECIAL POLICY AREAS

- **Special Policy Area boundaries modified through OPA No. 153 to reflect updated TRCA mapping (approved) – boundaries to be retained**
- **Existing policies to be retained**
- **Examining SPA lands (predominantly developed) as a land use designation with an SPA overlay in order to provide clearer land use information and guidance**

NEXT STEPS

- **Finalize the draft policies (April)**
- **Release revised mapping and policies to all stakeholders who have participated in the process to date and post draft mapping and draft policies on the website**
- **Further consultation with stakeholders and final input from MMAH, Region of York, TRCA and Rouge Park**
- **Final report and Recommendations (late spring or fall)**

THANK YOU

