

Wismer Commons Commercial Developments

Development Services Committee Part A
June 23, 2009

File Number ZA 09-114744
9650 Markham Road

Site Area and Context



Cranford Developments Inc.

Gas Bar, Car Wash and Tim Hortons.
Gas Bar/Convenience Store & Car Wash = 277 m²
Restaurant = 537 m²
Status: Approved Oct 18, 2004
Site Area: 1.1 ha (2.7 ac)

CRET 9900 Markham Ltd

The proposal includes a total of 12 buildings,
including 12,450 m² retail and 3,281 m² multi-
screen movie theatre containing 10 screens.
Submitted Date: February 8, 2008
Status: endorsed in principle by DSC on June
24, 2008
Site Area: 6.92 ha (17.1 ac)

**Wismer Markham (Commercial)
Development Inc.**

To proposal includes a 13,161 m² retail plaza.
The proposal includes a total of 7 buildings.
Status: endorsed in principle by DSC on June
24, 2008. Currently under construction.
Site Area: 5.24 ha (13.95 ac)

Home Depot Holdings Inc.

Total GFA of 8,287 m², plus 1,500 m²
outdoor garden centre
Status: Approved Nov 27, 2007
Site Area: 3.77 ha (9.32 ac)

**Wismer Markham (Commercial)
Development Inc.**

A retail plaza consisting of 11 buildings have a
total GFA of approximately 13,328 m².
Submitted Date: Awaiting submission of a site
plan application
Status: N/A
Site Area: 5.82 ha (14.38 ac)

Villarboit Development Inc.

Proposed Mixed Use Development currently under
revision.
Site Area: 12.8 ha (31.7 ac)

HIPA Investments Retail Plaza.

Proposed multi-tenant commercial building
A total of 3 buildings for a combined GFA of
(3,958.4 m²).
Commercial = 2 buildings (3,729.6 m²)
Daycare (Heritage Building) = 228.8 m²
Site Area: 1.17 ha (2.9 ac)

Krashnik Investments

Proposal to rezone the lands from Select Industrial and
Warehousing (M.I) to Major Commercial (MJC) Zone.
Site plan application was submitted to permit the
construction of a new 4,800 m² (51,668.5 ft²) multi-tenant
industrial building.
Site Area: 5.58 ha (13.8 ac)

**Bruce N. Huntley Contracting Castlemore
Investments**

The Brick, GFA of 4,445 m².
Site Area: 1.41 ha (3.48 ac)

Cedarland

Awaiting Site Plan and revised rezoning applications
Site Area: 2 ha (5.1 ac)

Terra Nero Investment

Self-serve coin car wash
Site Area: 0.46 ha (1.14 ac)



SITE PLAN

WISMER COMMONS



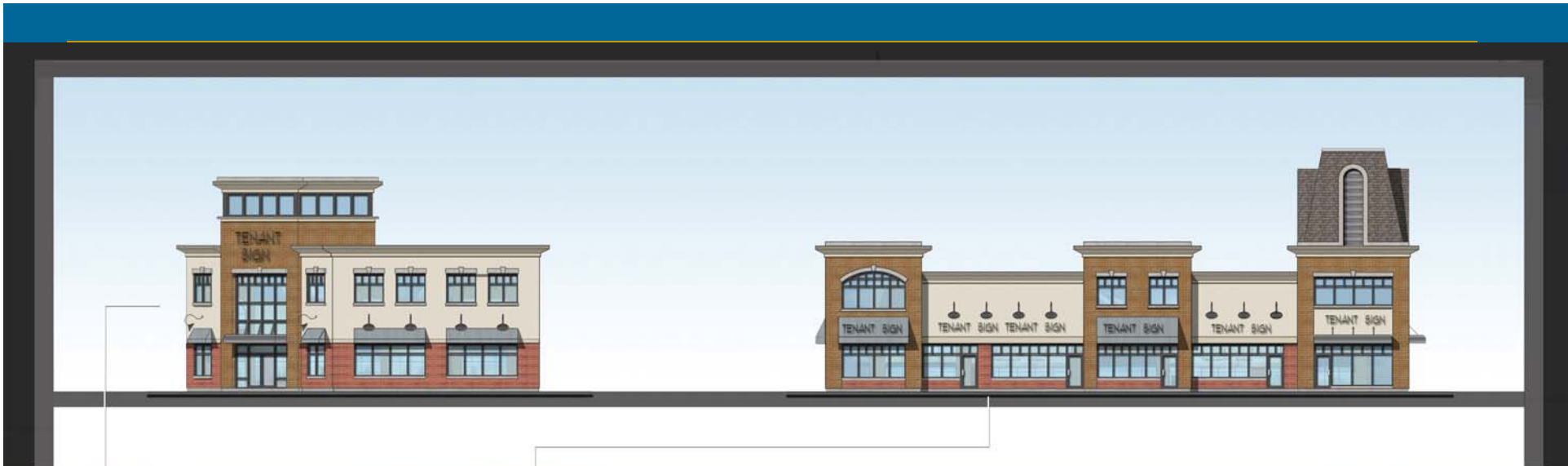
ENLARGED SITE PLAN

WISMER COMMONS



DEVELOPMENT PLAN

WISMER COMMONS



NORTH BLOCK STREETSCAPE | EAST ELEVATIONS

WISMER COMMONS



BMO

CRU

CIBC



A. BALDASSARRA ARCHITECT INC. JULY 2011



MIDDLE BLOCK STREETSCAPE | EAST ELEVATIONS

WISMER COMMONS



EAST ELEVATION



NORTH ELEVATION



SOUTH ELEVATION



WEST ELEVATION

SHOPPERS DRUG MART ELEVATIONS | WISMER COMMONS - MIDDLE BLOCK



SOUTH ELEVATION



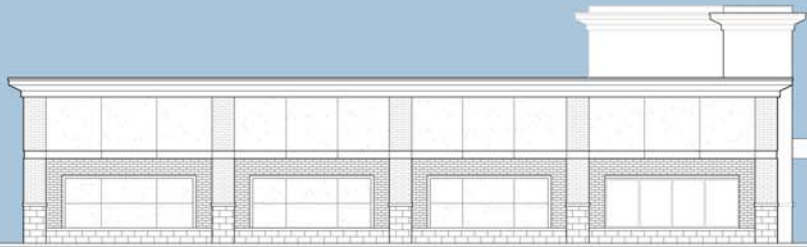
EAST ELEVATION



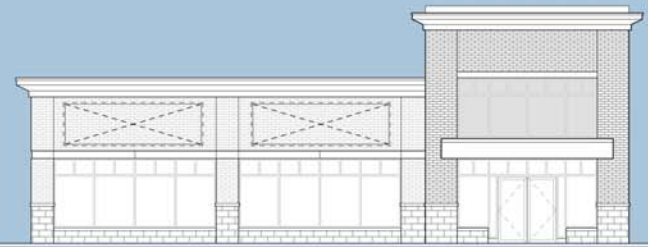
NORTH ELEVATION



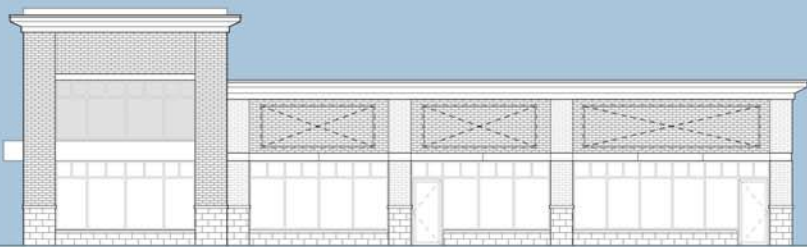
WEST ELEVATION



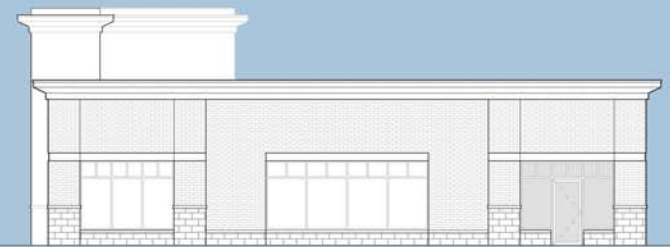
SOUTH ELEVATION



EAST ELEVATION



NORTH ELEVATION



WEST ELEVATION

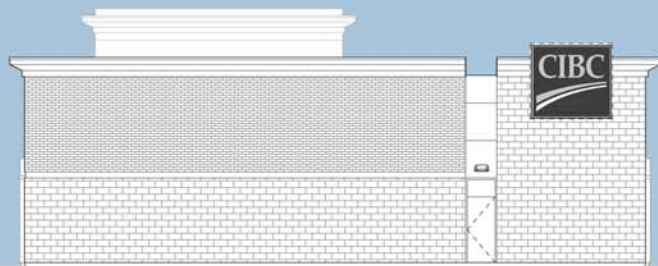
CRU BUILDING ELEVATIONS | WISMER COMMONS - MIDDLE BLOCK



EAST ELEVATION



SOUTH ELEVATION



WEST ELEVATION



NORTH ELEVATION