



# EAST MARKHAM COMMUNITY CENTRE + LIBRARY

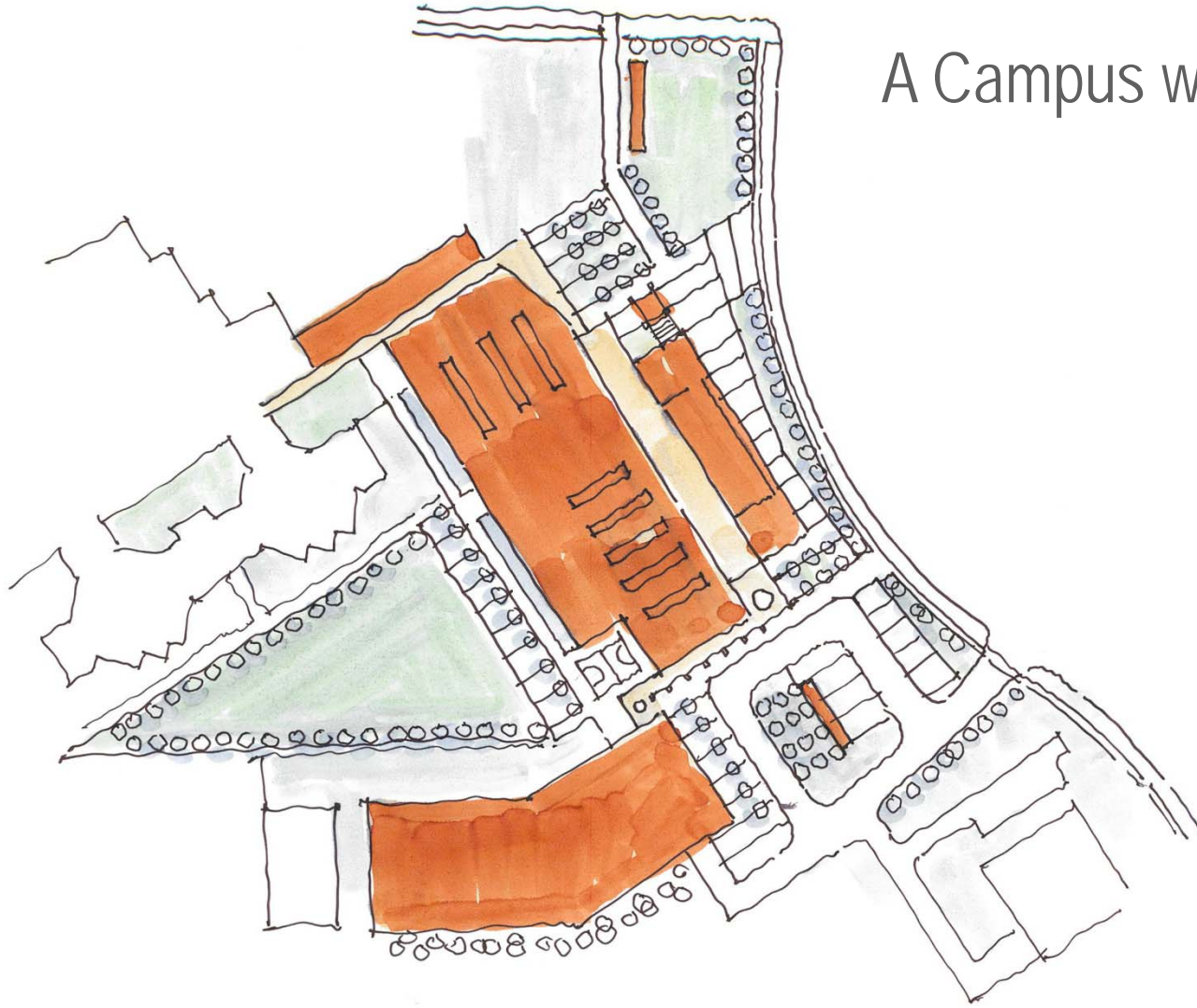
DESIGN CONCEPT

01 19 2009



SHORE TILBE IRWIN & PARTNERS

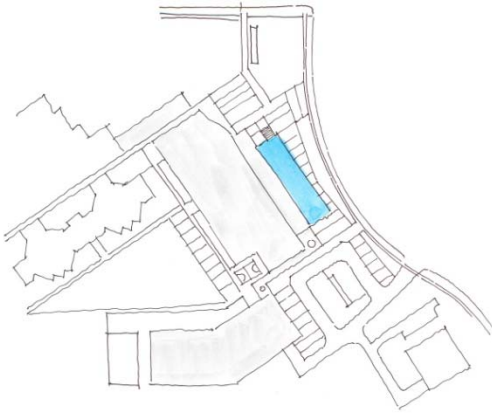
## A Campus within a Building



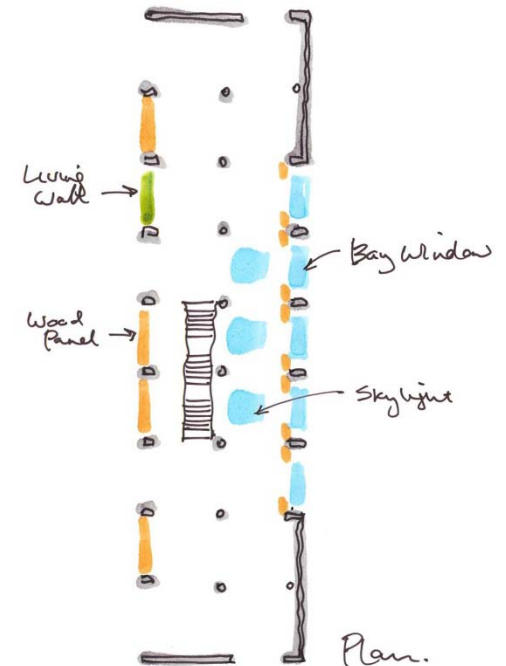
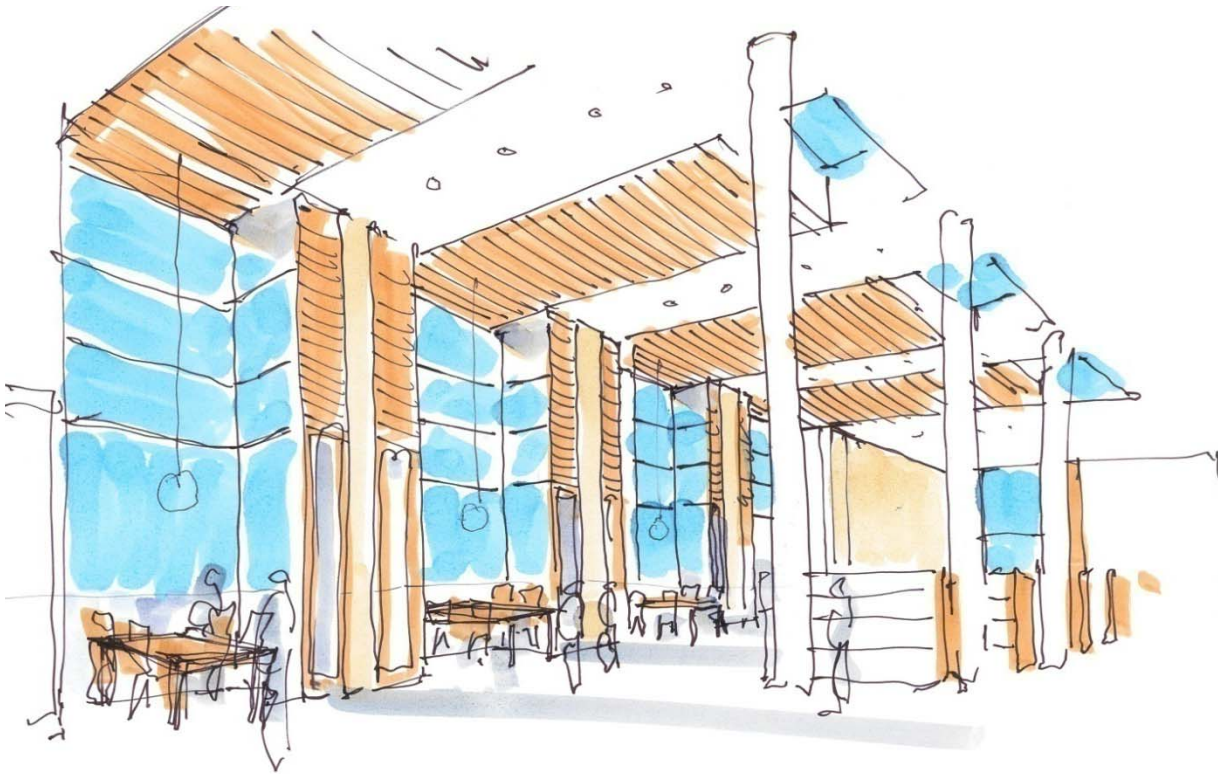
*By breaking down the building into clearly defined elements it becomes more sympathetic in scale to the surrounding context*

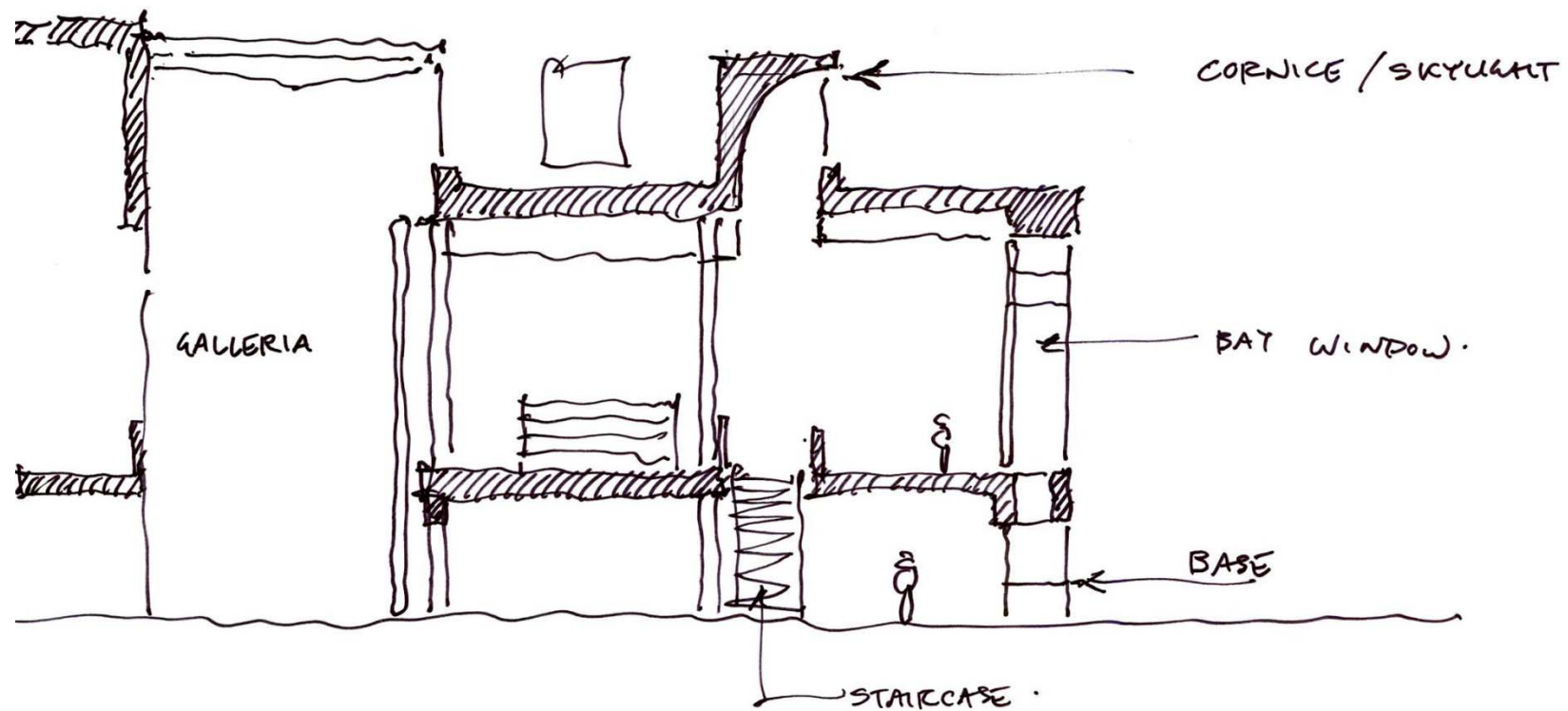
# The key elements

## The Library- a prominent civic element



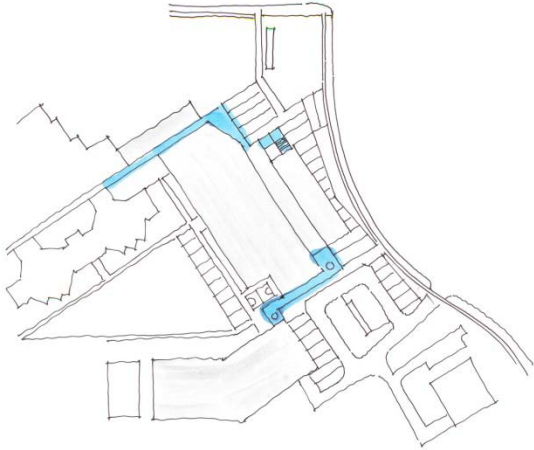
- traditional ordering- a repetitive structural bay
- proportion of opening and natural light
- a grand reading room- the 'piano nobile'
- an elevation in relief- bay windows





library cross section

# The key elements



loggia

## The Connectors

- a finer grained scale and rhythm

- definition of entry points
- a repetitive bay of seating niches
- the smaller scale lines of movement

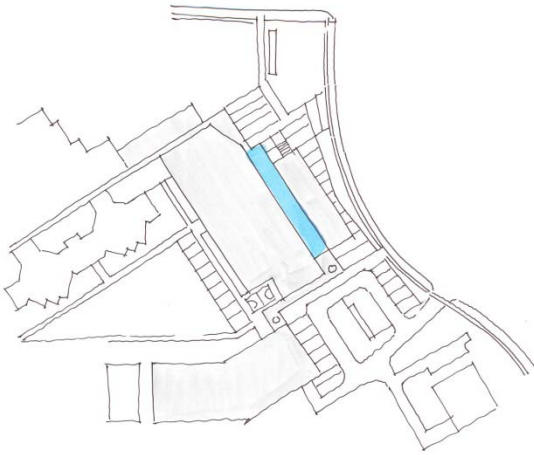


colonnade

# The key elements

## The Galleria- the collective space

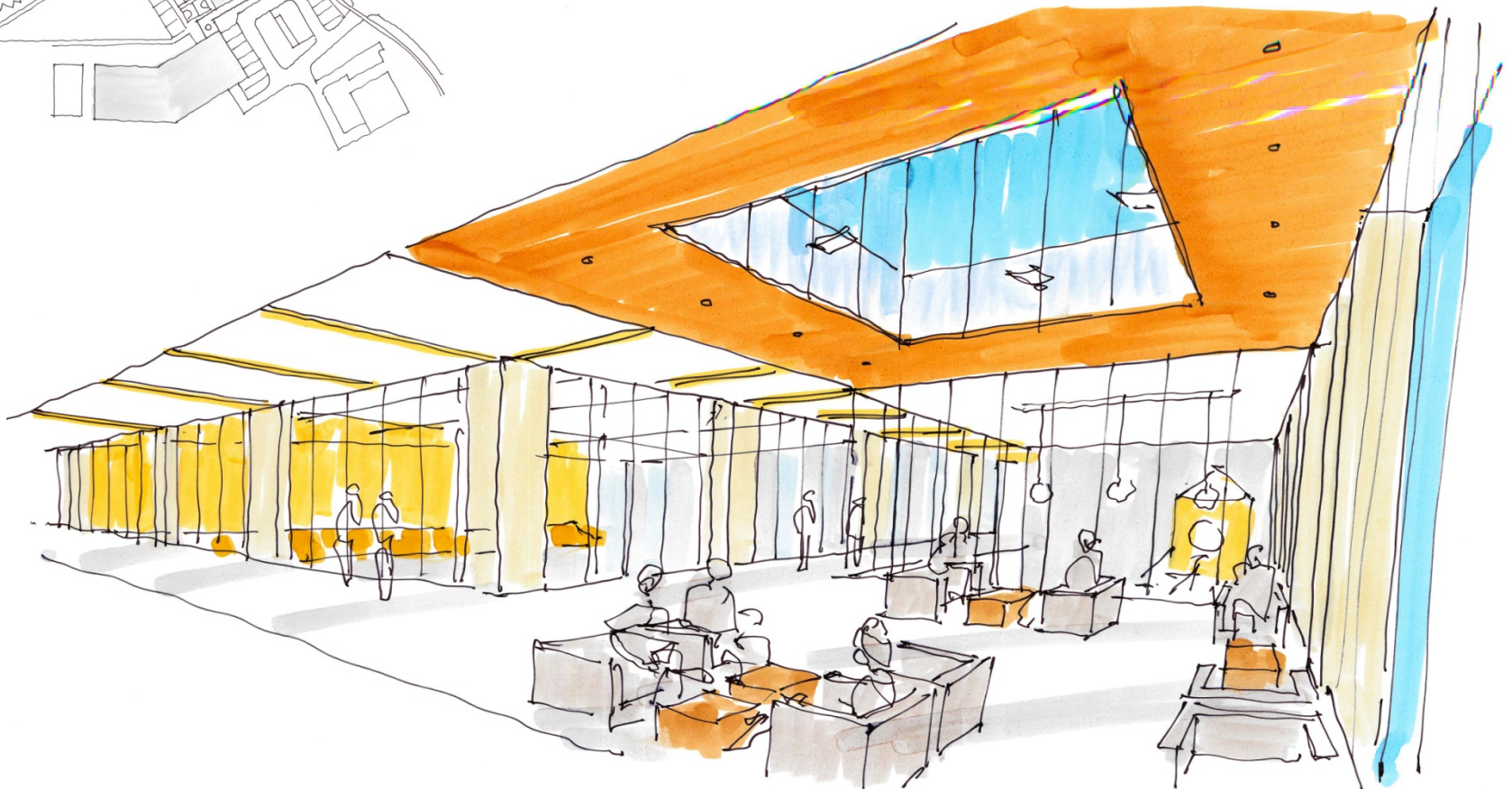
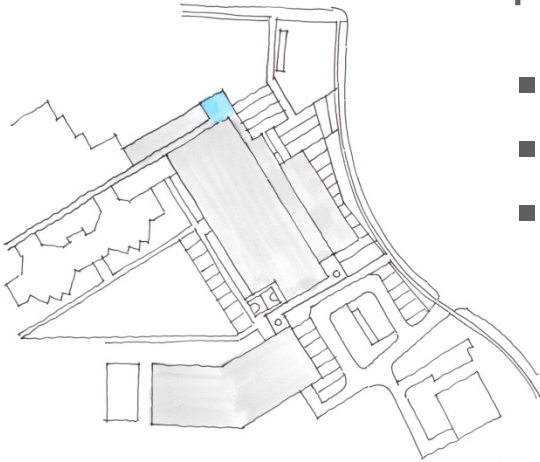
- the space between buildings
- an internal streetscape
- a sequence of clearly defined gathering zones

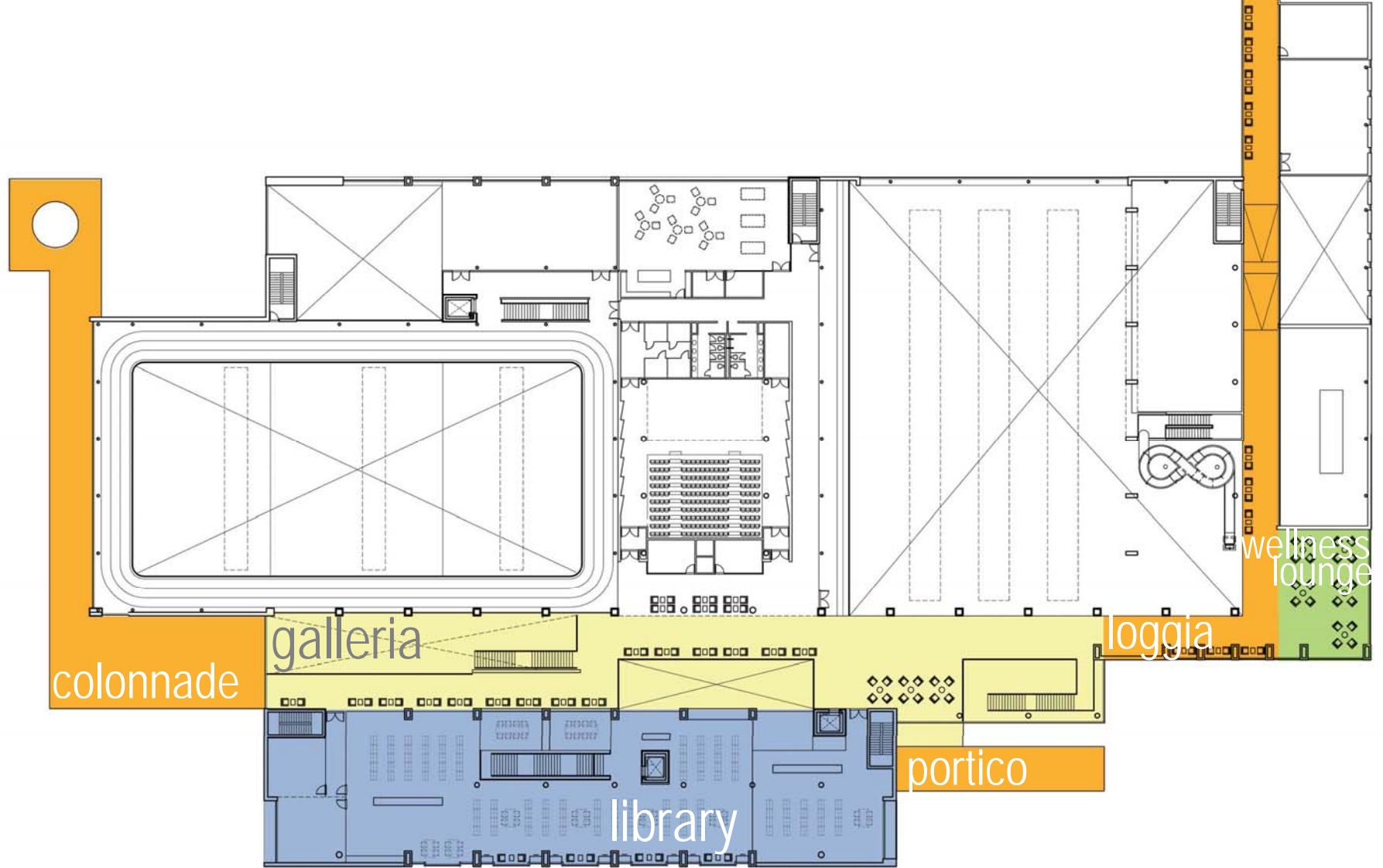


# The key elements

## The Wellness Lounge

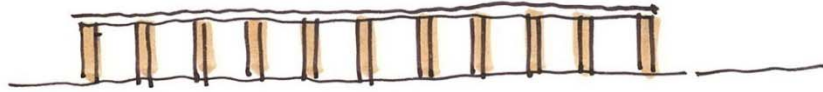
- a significant intersection of two axes
- a passive lounge and viewing area
- a lantern element at the building corner



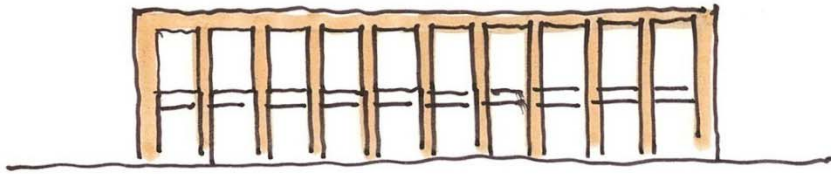


the revised plan

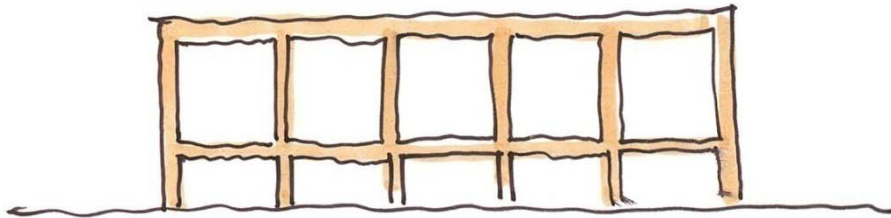
# A hierarchy of spaces



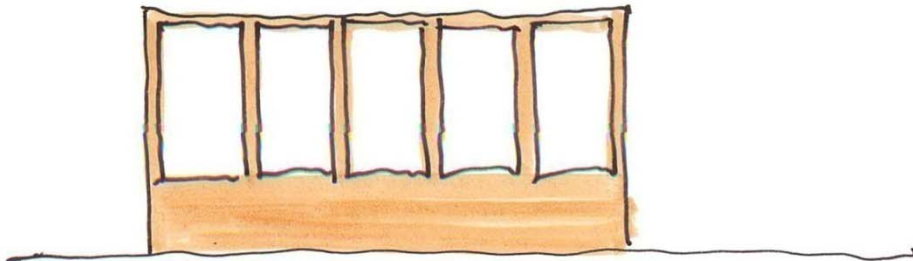
colonnade



loggia



library



active spaces



view from southeast along Buroak



view from southeast along Buroak



view from northeast along Buroak



parking garage