

February 13, 2009

Nory Takata, Parks Planner  
Operations, Town of Markham  
101 Town Centre Blvd,  
Markham, ON, L3R-9W3

**"Bob Hunter Memorial Park Habitat Restoration 2009"**

**Dear Markham Trees for Tomorrow Program Staff:**

Thank you for encouraging community-based action to plant trees, beautify Markham landscapes, and improve the health of our air, water, ecosystems and communities.

In the fall of 2008, Markham assisted FRW by providing 2500 beautiful trees for planting by Markham schools and corporations in Bob Hunter Memorial Park. Thank you to Bob Nicholson, Nory Takata, Karen Boniface and other Markham staff for your support and assistance with our school and community 2008 planting events.

Attached please find a 2009 funding application from Friends of the Rouge Watershed (FRW) which requests \$30,000 from the *TFT Fund* to support the planting of 18,000 trees, 2,000 flowering shrubs and 5,000 wildflowers to restore diverse native habitat to 180,000 m<sup>2</sup> (18 hectares) of Bob Hunter Memorial Park in Markham.

FRW has a long and successful record of involving youth, community and corporate volunteers in successful tree planting and habitat restoration projects. Below please find a few excerpts from the many letters of support attached to our application.

*"FRW has an excellent record of harnessing government, school, community and corporate support to achieve remarkable ecological restoration results."*

Mayor Frank Scapitti

*"I am pleased that FRW is partnering with Town of Markham schools to involve students in tree plantings in Markham and to educate and inspire students to improve the health and beauty of Markham and the Rouge River ecosystem".*

Deputy Mayor Jack Heath

**FRW Patrons**

Hon. Pauline Browes,  
Canada Roundtable  
on Environment  
and Economy

Hon. David Peterson,  
former Ontario Premier

Hon. Gerry Phillips,  
MPP Scarborough  
Agincourt

Former MPP Alvin  
Curling, Scarborough  
Rouge River

MP Derek Lee,  
Scarborough Rouge  
River

FRW's contribution to healthier ecosystems and communities has been recognized by:

- 2006 Green Toronto Award for Environmental Leadership;
- 2004 Award of Excellence from Wildlife Habitat Canada, York Region & Evergreen;
- 2002 Environmental Stewardship Award from Environment Canada;
- 1996 Certificate of Environmental Stewardship (Town of Markham, Milne Plantings)

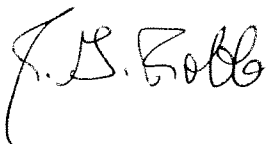
The support of Markham's TFT Fund will enable FRW to coordinate 1500 students and 500 community and corporate volunteers in 2009 to achieve the following results:

<b>Forest Regeneration:</b>	18 ha prepared and planted with 20,000 trees & shrubs
<b>Frog Pond Creation:</b>	4 vernal ponds created for frogs and turtles
<b>Wetland Enhancement:</b>	3.0 ha food plain restored to native vegetation
<b>Meadow Restoration:</b>	0.5 ha created and planted with 5,000 native wildflowers
<b>Riparian Plantings:</b>	500 metres planted adjacent to Bob Hunter Park trout stream
<b>Education:</b>	25+ educational nature walks for school and volunteers
<b>Local Tree Biodiversity:</b>	40+ kg of locally collected native tree seed planted
<b>Local Flower Biodiversity:</b>	40+ kg native wildflower seed planted
<b>Native Grass Seeding:</b>	50+ kg tall grass prairie and rye seed planted for meadow
<b>Nesting Boxes:</b>	10+ nesting boxes erected (8 bluebird, Kestrel, 2 wood duck)
<b>Habitat Structures:</b>	25+ log piles, 2 raptor posts created
<b>Species at Risk:</b>	2+ endangered species planted (e.g. Butternut, blazing star)
<b>Biomonitoring:</b>	3 before & after surveys birds, amphibians, turtles, butterflies
<b>Debris Clean-up:</b>	50+ bags of litter removed from Rouge Park
<b>Invasive Species Control:</b>	1000 m <sup>2</sup> invasive plants (DSV, Phragmites) removed
<b>Media Events:</b>	2+ media releases for large community and corporate plantings

FRW looks forward to partnering with the Town of Markham and local schools, groups and corporations, to plant trees and improve watershed and community health. We welcome the opportunity to answer your questions and utilize the expertise and skills of Markham staff to help implement this project.

Sincerely,

Jim Robb,  
GM, Friends of the Rouge Watershed  
647-891-9550





101 Town Centre Boulevard,  
Markham, Ontario, L3R 9W3

## Markham Trees for Tomorrow Fund Applicant's Guide and Application Form

### What is the Markham Trees for Tomorrow Fund (MTTF)?

Trees provide substantial environmental, social and economic benefits to our community. One mature tree can remove about 48 pounds of carbon dioxide from the atmosphere per year and release enough oxygen into the atmosphere to support two people. In the first 50 years of its' lifespan, the average tree will have produced \$31,250 worth of oxygen, \$62,000 worth of air pollution control, \$37,500 worth of recycled water and \$31,250 of erosion control. With the Markham Trees for Tomorrow program, more than 75,000 trees will be planted by 2010. This fund provides grants for tree planting projects to an upset limit of \$30,000.

### Who Can Apply?

- Markham Community Groups'
- Non Governmental Organizations
- Public Agencies

All plantings must be on publicly owned and accessible lands in the Town of Markham.

### What are the Program's Requirements?

Applications will be considered by the Environmental Issues Committee for recommendation to General Committee and Council.

All applications must:

- involve the active participation of community volunteers
- identify other sources of funding raised by the applicant

All applications must include:

- **detailed site plan** prepared by a landscape architect or certified forester, describing existing site conditions, any necessary site preparation prior to planting and how the site is to be accessed before, during and after the planting
- **detailed planting plan** prepared by a landscape architect or certified forester, including: species list, planting specifications and cost estimate; and briefly state the rationale behind species selection, planting densities and distribution within the context of the planting site; start and end date for the project
- **detailed event planning logistics** such as: locations of pathways; staging areas for the temporary placement of trees, mulch and other supplies; parking and traffic control requirements
- **written commitment** to monitor and provide follow up maintenance to ensure long term success for the project

### What are the Funding Criteria for an Application?

- applicants can request a maximum of \$30,000 from the MTTF per project per year for projects that will be completed within that same one-year time frame (12 months from issuance of cheque)
- only materials and equipment costs (not consulting services) are eligible for funding from the MTTF
- any groups that received funding for projects which have not been completed to the satisfaction of the Town are not eligible for future funding
- funding will not be granted where projects have been commenced.

### When are the application deadlines?

Funding will be awarded twice per year in Spring and Fall. Applications must be submitted by February 13, 2009 for Spring funding.

### How Do I apply?

- Step 1** **Contact the Parks Planner** about your proposed project and to request an application form. (Telephone: 905-477-7000 ext. 3226  
e-mail: [ntakata@markham.ca](mailto:ntakata@markham.ca))
- Step 2** **Complete the Application Form.** Please ensure that it is legible and signed.
- Step 3** **Prepare required supporting information**, such as illustrations and maps and attach them to the application form. In the event the Registered Owner of the lands is an entity other than the Town of Markham, a letter must accompany the application stating that the Owner consents to this application; acknowledges that the proposed project complies with all its applicable policies and requirements; and, that the writer has the authority to give its consent. Sufficient and complete information must be provided with the application for the Environmental Issues Committee to make a decision.
- Step 4** **Submit your application to the Parks Planner, Operations, Town of Markham, 101 Town Centre Boulevard, Markham, Ontario, L3R 9W3.**

### Application Checklist

Please ensure that your application is complete. Are the following included in your submission?

- A complete and signed application form, including all budget and funding details
- All supporting documentation such as a detailed site plan, species list, planting specifications etc.
- Consent letter from registered owner, if applicable

### What will happen next?

The Environmental Issues Committee will review all applications taking into account the established objectives and criteria described above. They may choose to grant the right to the applicant to present their proposal, if requested. They will determine which projects should be funded and how they should be funded (in a single payment or in phases) and make a recommendation to General Committee and Council.

### How will I be notified?

An acknowledgement will be sent upon receipt of an application. If your project is approved for funding, you will be contacted. If your application is not approved, you will be informed in writing.

### What happens after the Project is completed?

Upon completion of the project and no later than 12 months from delivery of the funding, you are required to submit your project report. Include a project summary and photos so we can review and promote your project, together with the completed consent forms permitting use of your photographs by the Town (copy attached).

### What does a Project Report Contain?

- accounting of how all funding has been spent
- original copies of paid invoices
- photographs for review and promotion of the project
- completed consent form for use of photographs

A project format will be provided to assist you in preparing the report

<b>Project Summary</b>
------------------------

<b>Group Information</b>
--------------------------

Name	Friends of the Rouge Watershed Inc.		
Address	2259 Meadowvale Road, Scarborough ON		
Phone	416.208.0252	Fax	416.396.3292
Email	jimrobb@frw.ca	Website Address	www.frw.ca
Charitable/Non Profit Organization registration #		Our Group has a bank account in the name of our organization	
<b>88878 1028 RR0001</b>		Yes <u>  X  </u> No <u>      </u>	

FRW's mandate is to work with youth and community to protect, enhance and restore watershed and ecosystem health, beauty and integrity. To accomplish this, FRW forms productive conservation partnerships with schools, community groups, religious organizations, businesses, municipalities, provincial and federal agencies, community leaders, foundations and environmental groups.

FRW was established in 1991 as an all volunteer organization. In 1997, we increased our operations from a few yearly environmental events to more than 120 youth and community planting and environmental education days each year by hiring full-time and seasonal staff. We are dedicated to improving watershed and ecosystem health and environmental education and responsibility.

Project Manager		Additional Contact	
Name	Jim Robb	Name	Colin O'Neill
Title	General Manager	Title	Restoration Field Projects Coordinator
Phone (work)	416.208.0252	Phone (work)	416.208.0252
Phone (home)	647.891.9550	Phone (cell)	416.624.5799
Email	jimrobb@frw.ca	Email	colin@frw.ca

# Application Form

Title	Bob Hunter Memorial Park Habitat Restoration 2009		
Location of Project	Bob Hunter Memorial Park		
Name of Registered Owner of the Lands	Toronto Region Conservation Authority		
Address of Registered Owner of the Lands	5 Shoreham Drive, Downsview, Ontario, M3N 1S4		
Contact Name for Registered Owner of the Lands	Ron Dewell		
Phone # Registered Owner of the Lands	(416) 661-6600, Ext, 5245	Duration (months, maximum 12 months)	9 months
Request for	Spring Funding <input type="checkbox"/>	Fall Funding <input type="checkbox"/>	Either <input checked="" type="checkbox"/>
Start Date of Project	March 2009	End Date	November 2009

## Project Team

FRW's General Manager, Jim Robb, has University of Toronto Forestry and Environmental Science degrees and more than 20 years of practical experience conducting community-based ecological restoration projects in the Rouge River Watershed. Colin O'Neill is FRW's restoration project field coordinator. Colin is a resource management graduate from Sir Sanford Fleming College with several years experience in ecological restoration planning, implementation and maintenance.

FRW's volunteer and education coordinator, Sadhana (Sadi) Siva, has MES and teaching degrees from York University. Sadi has several years experience training students and volunteers about tree planting, habitat creation, climate change and energy conservation. Sadi has developed curriculum relevant lesson plans, education information packages and community displays on Rouge Park, Greenbelt, watershed, climate change and energy conservation issues.

Over the last twelve years, FRW has planted and cared for more than 385,000 trees, shrubs and wildflowers. Together with our partners we have restored 150+ ha (1.5 million M2) of publicly-owned lands within Rouge Park. Each year, FRW coordinates more than 100 plantings with school classes, community groups, co-op and foreign exchange students, and corporations

FRW trains, educates and involves thousands of volunteers to successfully restore diverse wetland, forest and meadow habitats through a combination of: a) good site preparation; b) collection and planting of native grass, tree and wildflower seed; c) - good selection, care and planting of hardy native trees, shrubs and wildflowers; and d) - creation of log and brush piles, raptor posts, vernal ponds and hibernacula; e) - follow-up watering, mulching and maintenance.

## Recognition and Awards

- 2006 Green Toronto Award for Environmental Leadership
- 2004 Award of Excellence from Wildlife Habitat Canada and York Region
- 2002 Environmental Stewardship Award from Environment Canada
- 2002 Volunteer Involvement Awards from City of Toronto and Markham
- 2001 Rouge Park Award for Contribution to the Creation of the Rouge Park
- 1997 Scarborough Urban Design Award for volunteer work on the Rouge Watershed
- 1996 Scarborough Bicentennial Award for volunteer work on the Rouge Watershed
- 1996 Certificate of Environmental Stewardship (Town of Markham, Milne Plantings)
- 1995 Certificate of Environmental Stewardship (Town of Markham, Milne Plantings)
- 1994 Leadership in Community Ecological Restoration (Toronto)

## Work Plan (attached)

## Project Overview and Quantifiable Environmental Benefits

<b>Forest Regeneration:</b>	<b>18</b> ha prepared and planted with 20,000 trees & shrubs
<b>Frog Pond Creation:</b>	<b>4</b> vernal ponds created for frogs and turtles
<b>Wetland enhancement</b>	<b>3.0</b> ha food plain restored to native vegetation to reduce erosion
<b>Meadow Restoration:</b>	<b>0.5</b> ha created and planted with 5,000 native wildflowers
<b>School Involvement:</b>	<b>1500 +</b> student volunteers involved and educated about Rouge Park
<b>Community Involvement:</b>	<b>500</b> community and corporate volunteers involved and educated
<b>Riparian Plantings:</b>	<b>500</b> metres planted adjacent to Bob Hunter Park trout stream
<b>Rouge Park Awareness:</b>	<b>25+</b> educational nature walks for school and community volunteers
<b>Native Forest Biodiversity:</b>	<b>40+</b> kg native tree seed planted
<b>Wildflower Biodiversity:</b>	<b>40+</b> kg native wildflower seed planted
<b>Native Grass Seeding:</b>	<b>50+</b> kg tall grass prairie and rye seed planted for meadow habitat
<b>Nesting Boxes:</b>	<b>10+</b> nesting boxes erected (8 bluebird, 1 Kestrel, 2 wood duck)
<b>Habitat Structures:</b>	<b>25+</b> log piles, 2 raptor posts created
<b>Species at Risk:</b>	<b>2+</b> endangered species planted (e.g. Butternut, dense blazing star)
<b>Bio-monitoring:</b>	<b>3</b> before and after surveys birds, amphibians, turtles, butterflies
<b>Debris Clean-up:</b>	<b>50+</b> bags of litter removed from Rouge Park
<b>Invasive Species Control:</b>	<b>1000 m2</b> invasive plants (DSV, Phragmites) removed
<b>Media Events:</b>	<b>2+</b> media releases for large community and corporate plantings
<b>Youth Employment:</b>	<b>3</b> seasonal staff to help water & maintain trees
<b>Youth Education:</b>	<b>4</b> co-op students / 6 foreign exch. student volunteers
<b>Enhanced Hydrology:</b>	<b>34 million</b> litres/year reduction in runoff
<b>Innovation:</b>	<b>2</b> seeding and planting trial and follow-up survey

## Monitoring, Maintenance and Sustainability

FRW will conduct follow-up watering and maintenance until the trees are free-to-grow. Watering and maintenance are vital to planting success, particularly during summer droughts. FRW has a truck mounted 300 gallon watering tank, two Honda pumps and several hundred feet of two inch hose. With our experience and follow-up summer watering and maintenance, most FRW plantings enjoy a first year survival rate of 75+ % for hardwoods and 90+ % for evergreens.

Photographs and field surveys are used to document site conditions before and after plantings and to record flora and fauna and habitat use. FRW naturalist volunteers supplement our staff monitoring of vegetation, birds, mammals, amphibians and reptiles, butterflies and insects. Experts from the Toronto Zoo such as Bob Johnson and Tom Mason join FRW on amphibian and butterfly surveys and provide valuable feedback and support.

FRW employs students and foreign exchange students in the summer to help surround plants with mulch, protect them with rodent guards, water and monitor for survival and growth. Watering helps the transplanted trees to survive drought conditions until their roots get re-established. Mulch is placed around the trees to reduce runoff, moderate soil moisture and temperature, and reduce weed competition.

After a few years of maintenance, the plantings should be free to grow. With each passing year, the planted trees will: increase geometrically in size, beauty and biomass; store, recycle and purify more water; absorb more CO<sub>2</sub> and filter more air pollutants; improve more soil with fertile leaf mulch; and provide more habitat and food for native birds and wildlife. By the time the planted trees, shrubs and wildflowers begin to decline, seed and site conditions should be suitable for natural regeneration of a self-perpetuating climax hardwood forest

## Who will maintain and monitor the project after completion?

FRW will water and maintain the planted trees and shrubs for a few years until they are free-to-grow. The long term maintenance of these sites will be the responsibility of the Rouge Park and the TRCA, the land-owner.

Detailed Site and Planting Plans - attached please find:

- a) a Map showing the location of the two 2009 planting sites in Bob Hunter Memorial Park;
- b) two Restoration Plan Maps for our two BHMP sites; and
- c) a table with the numbers and species of trees, shrubs, wildflowers and grasses for each site.



FRW Restoration Sites Within  
The Bob Hunter Memorial Park  
2008 and 2009

Bob Hunter Memorial Park boundary

Little Rouge R.

Reesor Road

Steeles Ave E

9th Line

14th Ave

FRW restored 2008  
FRW restored 2008/2009

FRW restored 2008

FRW restored 2008

Bob Hunter Memorial Park  
Site F, G, H & I Restoration 2009

1003 m

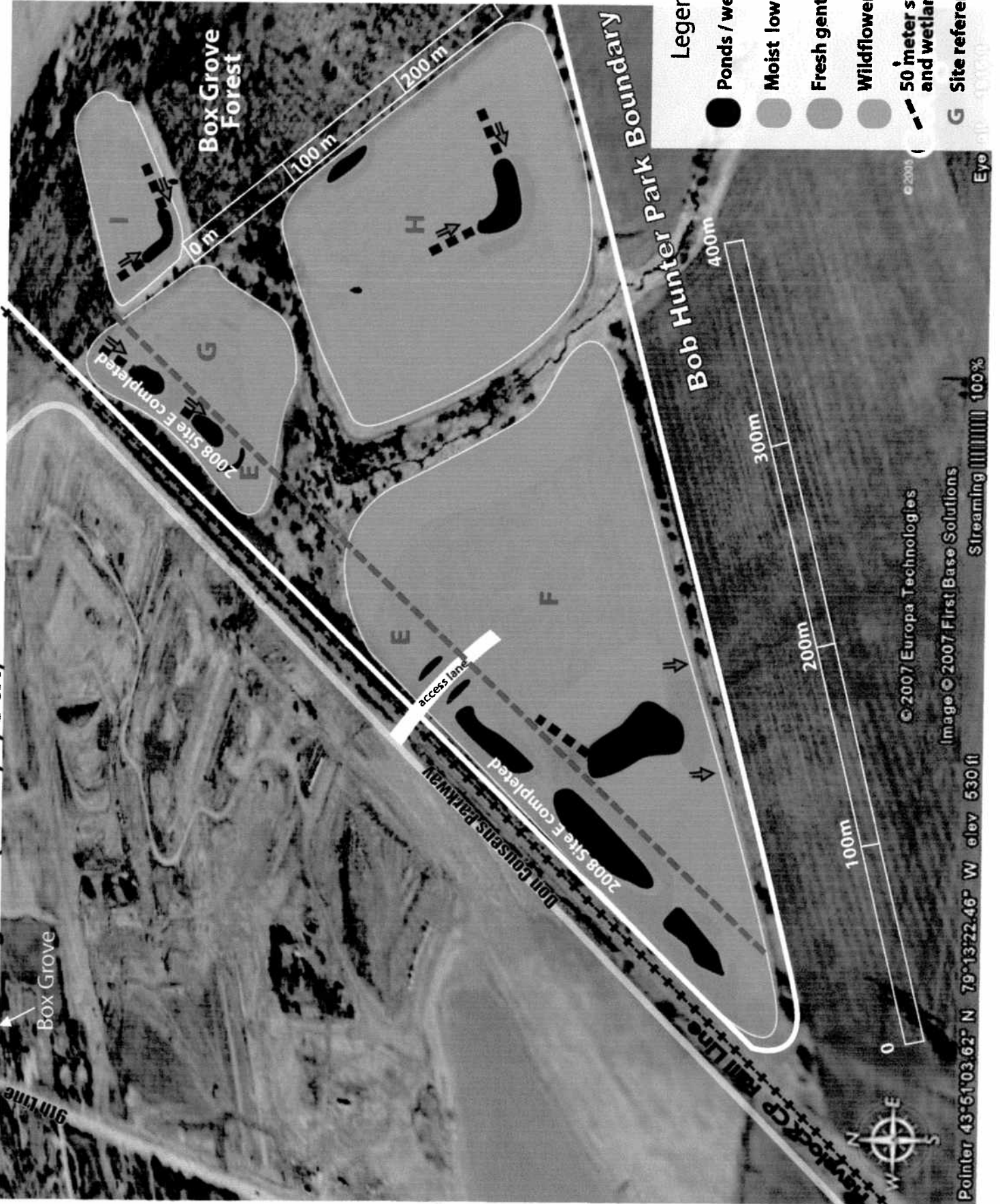
Google

© 2008 Tele Atlas  
Image © 2009 First Base Solutions

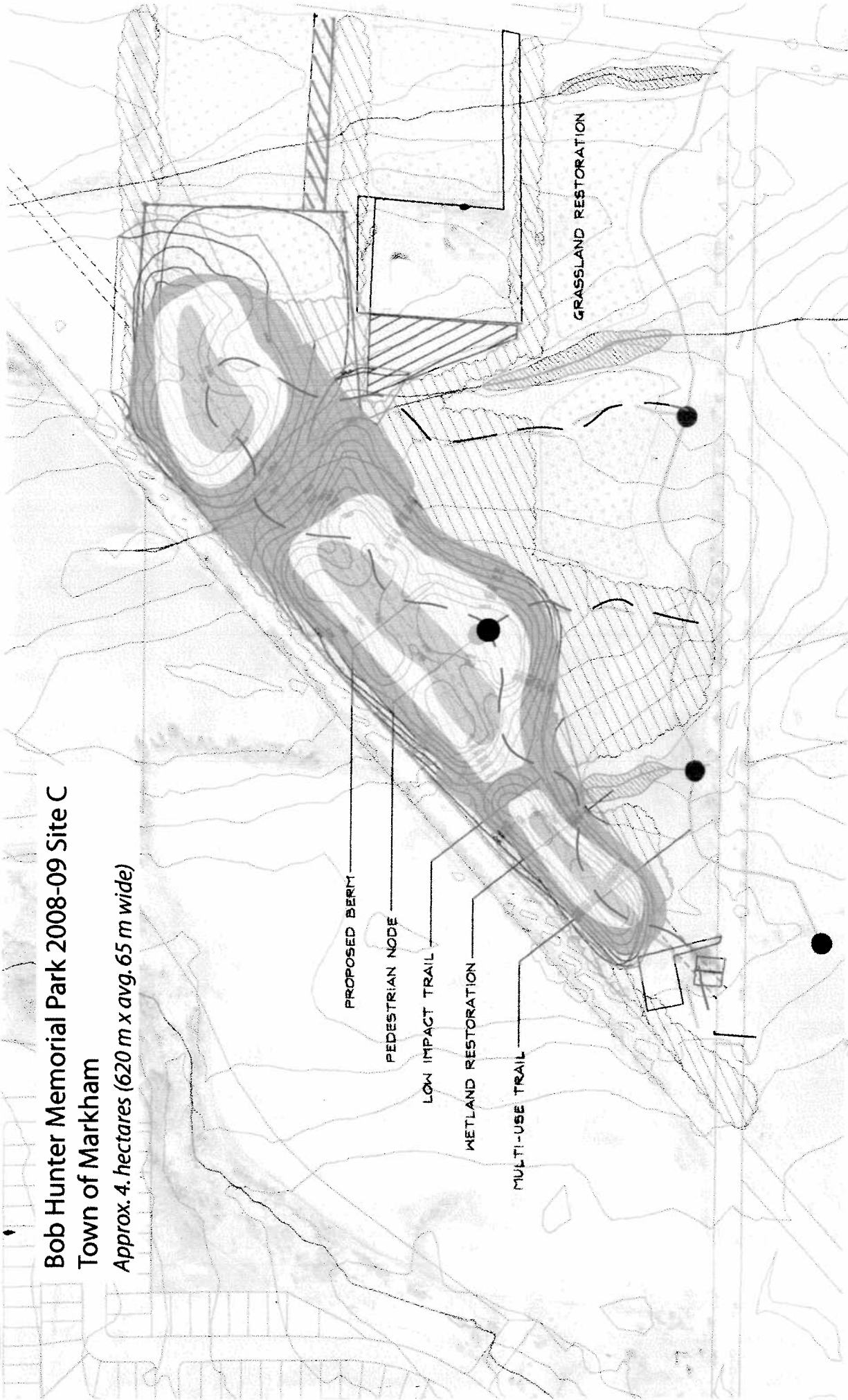




# Bob Hunter Park - South West Corner 2009 plantings Markham, Little Rouge R. (Sites F, H, G & I)

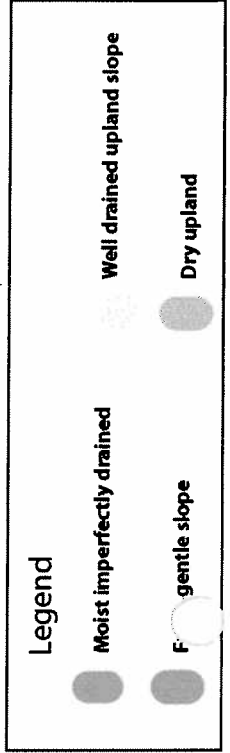


Bob Hunter Memorial Park 2008-09 Site C  
 Town of Markham  
 Approx. 4 hectares (620 m x avg. 65 m wide)



BOB HUNTER PARK - Layout and Restoration Concept

SEPTEMBER 2008



## BHMP Habitat Restoration Project – FRW Workplan 2009

Site C Berm and Southwest Corner Sites F to I	Season and Status
<b>Tasks</b>	
<b>Prepare for 2009 Habitat Restoration</b>	<b>October 2008 to March 2009</b>
TRCA Archeological Clearance of BHMP Sites C and F to I	Completed
Prepare Restoration Plans and Budget	Completed
Prepare Restoration Sites C and F to I 18 hectares for planting	Completed
Get Price Quotes and Order 20,000 Trees and Shrubs	Completed
Gain Rouge Park Alliance Approval and Funding	Approved Feb. 6, 2008
Fund-raise (\$198,000)	50% completed
Schedule Spring 09 Plantings with Schools and Corporations	90% completed
Sow 50 kg Native Grass Seed before winter snow	80% completed
Prepare Trucks, Trailers and Equipment	Underway
Obtain TRCA Site Access Permits	Underway
Work with TRCA and Rouge Park to Create Frog Ponds	Underway
Obtain sufficient shovels, buckets, mulch	Underway
Organize and Implement Seeding Trial	Underway
<b>Implement Habitat Restoration</b>	<b>April to June 2009</b>
Hire and train 3 seasonal workers to assist with pine plantings	Underway
Obtain and Train 4 Co-op Students	Completed
Involve more than 1000 students and 300 corporate volunteers in spring plantings	Scheduled
Plant 16,000 Trees and 1500 shrubs on 18 ha of BHMP sites	Ordered
Seed 20 kg of tree seed and 20 kg of wildflower seed	Collected
Order and plant 5,000 wildflowers on berms around frog ponds	
Plant cedar, spruce, nannyberry, etc along 500 metres of Bob Hunter Park stream	
Provide 25 Environmental Walks involving 1000 youth and community volunteers	
Organize 2 media events and two Tours to thank partners and Dignitaries	Scheduled
Plant 500 Dense blazing star and 50 butternut	
Hire summer staff (2) and organize exchange student Schedule	
<b>Water, Mulch, Monitor and Maintain</b>	<b>July to September 2009</b>
Water, mulch, weed and maintain plantings with exchange students and summer staff	
Organize Butterfly, Frog and Wildlife Public Walks	
Control Invasive Species over 1000 m2 around restoration sites	
Create 25 new habitat structures (log and brush piles) and 10 nesting boxes	
Clean-up 100 bags of unsightly litter and sources of pollution	
Conduct 3 bio-monitoring surveys of birds, amphibians, turtles, snakes,	
Work with Rouge Park to Plan for 2010 Restoration Sites, Archeological Clearance	
Collect and remove 50 bags of litter from project sites and nearby roadsides	
Remove 1000 m2 of invasive plants such as DSV around project sites	
Monitor Seeding Trial plots and Record Results	
<b>Complete Restoration Activities and Begin Plans for 2010</b>	<b>October to December 2009</b>
Plant 1,500 Trees and 500 shrubs	
Involve more than 500 students and 200 corporate volunteers in fall plantings	
Collect and plant 40 kg native flower seed and 40 kg native tree seed	
Sow Grass and Tree Seed on 2010 sites if accessible	
Develop 2010 Restoration Plans and Order Trees and Site Preparation	
<b>Report for 2009 and Prepare for 2010 Habitat Restoration</b>	<b>January to March 2010</b>
Prepare 2010 Workplan	
Thank Partners, Submit 2009 Reports and Conduct Annual Audit	
Plan and Fundraise for 2010 Restoration Projects	
Erect Nesting Boxes and clean-out past nesting boxes	
Create FRW Newsletter and Update website	



by Friends of the Rouge Watershed and Partners

Markham BHMP	Size	white	white	white	tamar	red	E. red	tremb.	white	maple	East	sycamore	black	white	tulip	hack	Flower-	Totals
FRW Tree Plantings	(ha)	pine	cedar	spruce	ack	pine	cedar	aspen	birch	silv.	cotton		ash	elm	tree	berry	ing	
		BR	BR	BR	BR	BR				red	wood						shrubs	
Bob Hunter Site C	4	2,500	500	500	100	500		500	300	350	200	400		50	50	50	950	6,950
Bob Hunter Sites F - I	14	6,000	3,000	1000	200	200	100	250	300	300	200	200	50	100	50	50	1050	13,050
<b>Column Totals</b>	<b>18</b>	<b>8,500</b>	<b>3,500</b>	<b>1,500</b>	<b>300</b>	<b>700</b>	<b>100</b>	<b>750</b>	<b>600</b>	<b>650</b>	<b>400</b>	<b>600</b>	<b>50</b>	<b>150</b>	<b>100</b>	<b>100</b>	<b>2000</b>	<b>20,000</b>

## Seeding and Wildflower Plantings by Site

	grass	tree	flower	native
Sites	seed	seed	seed	flowers
Bob Hunter Site C	25	20	20	3,000
Bob Hunter Sites F - I	25	20	20	2,000
<b>Column Totals</b>	50	40	40	5,000

### Flowering Shrubs by Species and Site

choke	service	high	nanny	pussy	black	wild
cherry	berry	bush	berry	willow	willow	rose
300	200	100	100	100	50	100
200	200	200	200	100	50	100
500	400	300	300	200	100	200
						2000

**Native Tree Seed:**

**Native Grass Seed:**

**Native Flower Seed:**

### Wildflowers:

bitternut hickory, shagbark hickory, black walnut, red oak, staghorn sumac, ninebark (collected locally)

big bluestem, Indian grass and Canada Rye

sweet oxe eye, black-eyed Susan, hoary vervain, evening primrose, etc., (collected locally)

fox-glove beardtongue, great blue lobelia, blue flag iris, blazing star, columbine, hoary vervain, black-eyed Susan, fireweed, bergamot, evening primrose, balsam ragwort, green headed coneflower, butterfly weed, showy tick trefoil, etc



### How will you promote the Markham Trees for Tomorrow Fund with this project?

As seen in our cover photos of fall 2008 plantings, FRW will proudly display Markham's Trees for Tomorrow banner at our planting events with school, community and corporate partners. FRW will also acknowledge Markham's TFT support through media releases, newsletters and our website. FRW events attract many dignitaries and good media coverage. For 2009, FRW already has a number of large events planned or scheduled, including:

April 21, 22 - 300 Markham School Students plant trees to celebrate Earth Day  
 May 30 - 200 Toyota Canada employees plant trees and wildflowers at BHMP  
 May 18 - 200 Telus Canada employees plant trees and wildflowers at BHMP  
 June - FRW Partners Tour of BHMP plantings 2008 and 2009  
 June 18 & October 8 - Unilever Canada  
 TBD - BDO Dunwoody Plantings.

### FRW will also highlight this project through:

- public nature walks and tours with MPs, MPPs, Councillors and dignitaries;
- displays and power-point shows given to the public, our partners & dignitaries.
- articles and photos submitted to MP, MPP and Councillor newsletters.

### FUNDING SOURCES AND IN-KIND SUPPORT

Name of Organization	Application deadline	Funding confirmed	Contact	Funding dollars	In-kind contribution
Rouge Park		Y	Bob Clay 905-713-6022	70,000	
Toyota Canada		Y, Y	Vince Moffatt 416-431-8312	10,000	5,000
Student Volunteers		Y	Draft Spring Schedule Attached		24,000
School Buses etc		Y	Jane Wadden 416-396-6963		20,000
4 Co-op Students		Y	Jane Wadden 416-396-6963		5,800
6 Foreign Exch. Students		Y	Karen Boucher 905-895-3993		5,000
BDO Dunwoody		N	Salmaan Alvi 905-946-5403		3,000
Unilever Canada		Y Y	Carla Tomayer 905-948-5075	3,000	3,000
Telus Canada		N N	Rebecca Geller 416-883-4495	5,000	4,000
Markham (50 loads mulch)		N	Nory Takata 905-477-7000 ext.3226		10,000
Markham (Bobcat)		N	Nory Takata (905) 477-7000 ext.3226		4,000
EcoAction	Nov 08	N	Kim Colevecchia 416-739-4768	30,000	
Evergreen	Jan 09	N	Zanita Lukezich 416-596-1495	10,000	
GLSF	Nov 08	N	Rimi Kalinauskas 416-739-5836	15,000	
HRSDC	Apr 09	N	A. Bouterakos 416-973-7403	3,000	
MNR CWIP/CFIP	Jan 09	N	K. Golby 905-713-7403	5,000	
TD FEF	Feb 09	N	L. Carbone 416-308-5053	10,000	
Go Green Ontario		Y	Jean-Pierre Bombardier 416-325-6906	7,000	
<b>Funding Subtotal</b>				<b>168,000</b>	
Town of Markham	Jan 09	N	Bob Nicholson 905-477-7000	30,000	
<b>Total Budget</b>				<b>198,000</b>	<b>83,800</b>

**Cash:** On February 6, 2009, the Rouge Park Alliance approved FRW's BHMP site and funding of \$105,000. Approximately \$70,000 is for Markham BHMP sites and \$35,000 is for Site 4 near Reesor Wetland in Toronto. Of the \$198,000 cash budget for 2009 BHMP plantings, \$90,000 has been confirmed and \$108,000 worth of applications have been submitted and await decisions.

**In-kind:** The in-kind support for Toyota Canada involves volunteers and the provision of a Toyota Tundra truck for FRW. With the exception of Markham, the other in-kind support involves volunteer planting support. The proposed Markham in-kind support involves 50 truckloads of wood chips (\$10,000) and 40 hours of bobcat time for moving wood chips (\$4,000).

**Will there be an educational sign component?**

Temporary signs and banners will be used to acknowledge project partners during planting events. FRW's Education and Volunteer Coordinator, Sadi Siva (Markham resident) has prepared information packages which will be distributed at planting events. These packages include information on: Markham's Trees for Tomorrow Program; the Rouge Park; Friends of the Rouge Watershed; the Greenbelt; and Climate Change and Energy Conservation.

No signage is anticipated for sites F to I . The TRCA and Rouge Park will be working with York Region and Markham regarding any signage for Site C.

Total Project Cost	<b>\$198,000</b>	Amount requested from the MTTF	<b>\$ 30,000</b>
Amount from other sources	<b>\$168,000</b>	In- Kind support hours	<b>5,280 hrs</b>

**BUDGET FORM – HUMAN RESOURCES****BUDGET FORM – HUMAN RESOURCES (Volunteers)**

Service	Details		In- Kind Value (in hours worked)
	Number of People	Estimated Time for Each (hour)	
School Plantings (50 classes X 30 /class X 2 hrs)	1500	2	3000 hrs
Teaching Assistants (50 classes X 2 assistants x 2 hours)	100	2	200 hrs
4 Co-op Students & 6 Foreign Ex. Students	10	108	1080 hrs
5 Corporate Plantings (500 X 2 hr each)	500	2	1000 hrs
<b>Totals</b>			<b>5,280 hrs</b>



## BUDGET FORM – BHMP Habitat Restoration 2009 (FRW)

Description	Units	Unit Cost	Cash Total	MTFT Cash	Other Cash	In-kind
<b>Materials, Supplies, Equipment</b>			<b>107,500</b>	<b>30,000</b>	<b>77,500</b>	<b>19,000</b>
Pine, spruce, cedar (2+2, 30 cm BR)	14,500	\$1.20/tree	17,400	8,000	9,400	
Pine B & B 60 to 80 cm (Toyota Planting)	100	\$16/each	1,600		1,600	
Native deciduous trees (150 cm BR)	1,700	\$ 6 /each	10,200	4,000	6,200	
Native deciduous trees (150+ cm potted)	1,700	\$10/each	17,000	7,000	10,000	
Native shrubs (50 to 60 cm height)	2,000	\$ 5/shrub	10,000	5,000	5,000	
Native Tree and Shrub Seed (40 kg)	40 kg	\$ 50/kg	2,000	1,000	1,000	
Native Wild flowers (20+ species)	5,000	\$1.80/flower	9,000		9,000	
Native Tall Grass Seed	50 kg	\$70/kg	3,500		3,500	
Native Wildflower Seed	50 kg	\$200/kg	10,000	1,000	9,000	
Rodent guards and weed blankets	2,500	\$2/combo	5,000	2,000	3,000	
2 Trucks, Water tank, pump, 2 trailers	80 days	\$162.5/day	13,000	1,500	6,500	5,000
Shovels, wheel barrows, buckets,	100 units	\$15 /unit	1,500	500	1,000	
Truckloads of Mulch and Logs	50 loads	\$200/truck				10,000
Excavators / Tractor for Site Prep.	40 hours	\$150/hour	6,000		6,000	
Backhoe / Bobcat for moving mulch, logs, etc	60 hours	\$100/hour	6,000		6,000	4,000
Cube van rentals (tree pick-ups)	6 days	\$300/day	1,800		1,800	
Buses for Schools (all but 2 in-kind)	2 buses	\$250 each	500		500	
<b>Other (Pro-rated, 2/3 of FRW overall plantings)</b>			<b>14,300</b>		<b>14,300</b>	
FRW Public Liability Insurance (\$2,000)			1,300		1,300	
FRW Vehicles (\$3,000)			2,000		2,000	
Project Bookkeeping (\$3,000)	80 hours	\$25/hour	2,000		2,000	
Audit, T4s, CCRA Returns (\$5,100)	50 hours	\$70/hour	3,400		3,500	
Phones, computers, office supplies (\$5,100)			3,400		3,500	
FRW office Rent (\$3,000)			2,000		2,000	
<b>Human Resources</b>			<b>76,200</b>		<b>76,200</b>	<b>64,800</b>
School Plantings (50 X 30 /class X 2 hrs)	3000 hrs	\$8/hour				24,000
Hillside Buses, Teacher Assistants	50 days	\$400/day				20,000
4 Co-op Students & 6 Foreign Ex. Students	1080 hrs	\$10/hour				10,800
5 corporate Plantings (500 X 2 hr each)	1000 hrs	\$10/hour				10,000
3 youth workers (3 to 4 weeks)	600 hours	\$10/hour	6,000		6,000	
Summer staff water, weed and maintain sites	25,000	\$0.20 plant	5,000		5,000	
Coordinate 5 business /community plantings	192 hours	\$21/hour	4,032		4,032	
3 staff X 8 hrs/day X 5 planting + 3 set-up days	1200	\$21/hour	25,200		25,200	
FRW Coordinate 50 School planting days						
3 FRW staff X 8 hours/day X 50 planting days	30,000 5G	\$0.30/bucke t	9,000		9,000	
Mulching around trees, shrubs, wildflowers						
Fund-raising & Volunteer Event Coordination	300 hours	\$25/hour	7,500		7,500	
Project Supervision, Admin. and Reporting	200 hours	\$25/hour	5,000		5,000	
Approvals and Partner Liaison / Meetings	178 hours	\$25/hour	4,450		4,450	
CRRA Payroll Deductions and WSIB			10,018		10,018	
<b>Project Totals</b>			<b>198,000</b>	<b>30,000</b>	<b>168,000</b>	<b>83,800</b>

<b>How did you organization hear about the MTF?</b> (Please check one)			
Town Website <input type="checkbox"/>	Newspaper advertisement <input type="checkbox"/>	Word of mouth <input checked="" type="checkbox"/>	Other <input type="checkbox"/>
<p>Upon completion of this Project please submit your project report, as well as original invoices, photos and records to Parks Planner, Operations, Town of Markham, 101 Town Centre Boulevard, Markham, Ontario, L3R 9W3. Telephone 905-477-700 ext.3226 Fax 905-940-1550. Photos may be posted on the Town's website.</p>			

### **Attachments – Bob Hunter Memorial Park Habitat Restoration 2009**

#### **A. Letters of Support (Elected Officials)**

Mayor Frank Scarpitti  
 Deputy Mayor Jack Heath  
 Councillor Logan Kanapathi  
 MPP Gerry Phillips

#### **B. Letters of Support (Agencies and Partners)**

Rouge Park - Email to TRCA confirming Approval of 2009 BHMP Sites)  
                   - Site and Funding Approval February 6, 2009 – Formal letter to follow  
 Rouge Park (General Letter of Support)  
 TDSB School and Volunteer Participation  
 Toyota Canada Letter of Support  
 Unilever Canada Letter of Support  
 Markham School Teacher Feed Back Forms  
 Bob Johnson (Zoo Technical Support Letter – Vernal Ponds)  
 Tom Mason (Zoo Support Letter)

#### **C. Draft FRW Spring Planting Schedule**

#### **D. Frog Pond Schematic (Duck's Unlimited Wetland Engineer Dave West)**

#### **E. FRW Registered Charity Letter**

#### **F. FRW Incorporation**

#### **G. FRW Proof of Public Liability Insurance**

## Applicant's Signature

I hereby make application for funding from the Markham Trees for Tomorrow Fund, declaring that all information contained herein is true and correct and acknowledging that the Town of Markham will assess this application based upon the information contained in this application.

If approved for funding I further acknowledge and agree:

1. to comply with all relevant policies and secure all permits required for this project and acknowledge that the Town bears no responsibility or has any liability in any manner with respect to this project.
2. that the Town reserves the right to review communications and communication materials to be presented to the public to ensure compliance with Town policies, including the Town's Communication Standards.
3. to promote the Markham Trees for Tomorrow Fund on any communication materials, or signage associated with this project and will provide a detailed report on the project outlining how the funds were used to support the project upon completion of the project and no later than 1 year from receipt of the funding.
4. to allow the Town of Markham to use the project name and any images associated with the project to promote the Markham Trees for Tomorrow Program.
5. to return all unspent funds to the Town of Markham upon completion of the project.
6. that there shall be no personal benefit directly, or indirectly, from this funding and I will notify the Town of any conflict of interest situation should it arise in carrying out of the project.
7. permit the Town of Markham to claim ownership of all carbon credits and other measurable ecological services resulting from the project.

Signature

*Jim Robb*

Title

*GM*

Printed Name

*Jim Robb*

Date

*Feb 13/09*

*In the event the Registered Owner of the lands is an entity other than the Town of Markham, a letter must accompany the application stating that: the Owner consents to this application; acknowledges that the proposed project complies to all its applicable policies and requirements; and, that the writer has the authority to give its consent.*

*Submission of this application form does not guarantee approval of your application.*

*Personal information contained herein is subject to the Municipal Freedom of Information Act and the Personal Protection and Electronic Documents Act. The information collected may be used for promotional purposes. Completion of this form constitutes consent by the applicant to these terms and uses.*

OFFICE USE ONLY				
Date Application Received			New Applicant?	Yes No
Approved/Not Approved	Yes	No		
Acknowledgement Letter Sent?	Yes	No	Date Sent	
Letter of Approval or Rejection Sent?	Yes	No	Date Sent	
Final Report Received?	Yes	No	Date Received	
Photos Received?	Yes	No	Date Received	
Consent for Photographs received	Yes	No	Photos posted on website?	Yes No

# Markham Trees for Tomorrow Fund

## Photo Consent and Release Form

I, James G. Robb hereby permit and authorize the *(Print in full – first, middle initial & last name)* Town of Markham (the "Town") to take my photograph/image.

I acknowledge and agree that the Town may publish or use the image for any Town purposes by any means whatsoever including, but not limited to electronic or digital means. I acknowledge that the Town may not be able to control the distribution or use of the image by other than Town representatives.

I agree that this Consent and Release is given in perpetuity and for no consideration, credit, acknowledgment or financial recompense, now and in the future.

I hereby hold the Town harmless for any claims, actions, debts, damages, injuries or losses that may arise or be incurred as a result of the taking, use, publication or distribution of the image and I agree to indemnify the Town against any third party claims, actions, damages, injuries or losses brought or assessed against or incurred by the Town for the use of the image(s).

### Contact Information

Signature	<u>J. G. Robb</u>	Date			
Address	<u>1259 Meadowvale Rd</u>				
Town	<u>Scar</u>	Province	<u>ON</u>	Postal Code	<u>M1X 1B2</u>
Telephone	<u>416 208 0292</u>		Email	<u>jgrobbs@town.ca</u>	
<b>Town of Markham:</b>					
Town Representative		Date			



Frank Scarpitti  
Mayor

February, 2009

**Dear Potential Partners of Friends of the Rouge Watershed:**

I am pleased to provide this letter of support for Friends of the Rouge Watershed (FRW).

In my inaugural speech in December 2006, I stated:

"During the next four years, we will plant more trees than we have planted in the last decade, making Markham a greener and better place to live and work."

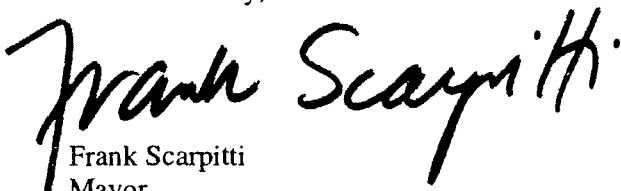
Markham values our planting partnerships with FRW. In 2008, Markham partnered with FRW to involve more than 1500 school, community and corporate volunteers in the planting of 19,000 native trees, shrubs and wildflowers, and the creation of ten frog and turtle ponds. Working together, we restored forest, meadow and wetland habitat on approximately 110,000 square metres (11 ha) of public land in Bob Hunter Memorial Park, near Box Grove, in southeast Markham.

Milne Park provides a good example of the tremendous long-term success of past planting partnerships (1994 and 1995) between Markham and FRW. The small pine, cedar, birch, maple and oak saplings planted by volunteers in 1994 and 1995 are now fifteen to thirty foot tall juvenile trees (5 to 10 metres). The planted trees have grown into a young forest which purifies our air and water, absorbs greenhouse gases, reduces flooding and erosion, beautifies public parkland, and provides habitat for birds.

FRW has an excellent record of harnessing government, school, community and corporate support to achieve remarkable ecological restoration results.

To protect and improve watershed and community health, I strongly encourage potential partners to support the successful community-based ecological restoration work of FRW.

Yours sincerely,

  
Frank Scarpitti  
Mayor



November 18, 2008

Dear Potential Partners of Friends of the Rouge Watershed:

I am pleased to provide this letter of support for Friends of the Rouge Watershed.

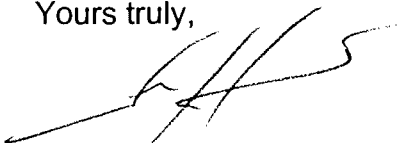
The Town of Markham is committed to environmental leadership and sustainability. In his December, 2006 inaugural speech, Mayor Scarpitti stated: "During the next four years, we will plant more trees than we have planted in the last decade, making Markham a greener and better place to live and work."

Over the last twelve years, FRW has tirelessly involved more than 35,000 students, community and corporate volunteers in the planting of more than 330,000 trees, shrubs and wildflowers to restore Rouge Park sites in Scarborough, Markham and Richmond Hill. These community plantings help Mother Nature to restore a beautiful mixture of forests, wetlands, and wildflower meadows on 1.4 km<sup>2</sup> of public greenbelt lands which link Lake Ontario with the Oak Ridges Moraine.

I am pleased that FRW is partnering with Town of Markham schools to involve students in tree plantings in Markham and to educate and inspire students to protect and improve the health and beauty of Markham and the Rouge River ecosystem.

I strongly encourage potential partners to support the successful youth and community based environmental education and ecological restoration work of Friends of Rouge Watershed

Yours truly,



Jack Heath  
Deputy Mayor



**Logan Kanapathi**  
Councillor – Ward 7

---

December 2, 2008

Dear Potential Partners of Friends of the Rouge Watershed:

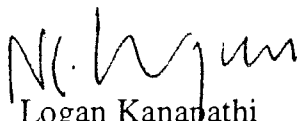
It gives me great pleasure to provide a letter of support for Friends of the Rouge Watershed.

The community are aware of your tireless efforts involving your commitment to encourage students and volunteers in planting thousands of trees to restore the beauty in Rouge Park sites in Scarborough, Markham and Richmond Hill.

I am pleased that FRW is partnering with the Town of Markham schools to involve students in this mission and educating them the importance of our ecosystem.

Markham is committed to continue its efforts as a leader in environmental and sustainability issues and we strongly encourage partners like your organization to make a difference.

Yours truly,

  
Logan Kanapathi  
Councillor Ward 7



Gerry Phillips, M.P.P.  
Scarborough - Agincourt

October 24, 2008

**Dear Potential Partners of Friends of the Rouge Watershed:**

I am pleased to provide this letter of support for Friends of the Rouge Watershed.

FRW has tremendous expertise, experience and success in the areas of environmental education and protection, community awareness and involvement, and habitat enhancement and restoration.

I regularly walk and cycle in Rouge Park and I have taken an active role in the protection of the health and beauty of the Rouge Valley ecosystem for many years.

I am proud of the Ontario Government's leadership role in the creation and expansion of Rouge Park as a beautiful Greenbelt link between Lake Ontario and the Oak Ridges Moraine. I know that FRW has also played an important role in the protection of the Rouge Park and the Greenbelt.

Over the last twelve years, FRW has worked tirelessly to involve more than 25,000 students and 10,000 community and corporate volunteers in the planting of more than 330,000 trees, shrubs and wildflowers in Rouge Park. These plantings have restored a beautiful mixture of forests, wetlands and wildflower meadows to 140,000 square metres of public Greenbelt lands.

As a regular visitor to Rouge Park, I can attest to the remarkable success of FRW's ecological restoration work. The once barren Beare gravel pit has been transformed by FRW and mother nature into a beautiful and biodiverse 50,000 square metre wetland. Today, Beare wetland is home to rare and interesting flora and fauna which the public can enjoy viewing from a perimeter trail. FRW has also worked with Rouge Park, TRCA and the provincial Go Green program to create a new 35,000 square metre wetland on the east side of Reesor Road north of the Toronto Zoo.

As a long time supporter of the TDSB's Hillside Outdoor Education School near the Rouge Valley, I am pleased that FRW is partnering with Hillside to educate students about the Rouge Park and Greenbelt and ways to protect the health of our water, air, land, food and communities.

I heartily support the community-based environmental education and ecological restoration work of FRW.

Sincerely,

MPP Gerry Phillips  
Scarborough Agincourt

Suite 204, 4002 Sheppard Avenue East, Scarborough, ON M1S 4R5 • T - (416) 297-6568 F - (416) 297-4962 E - [gphillips.mpp.co@liberal.ola.org](mailto:gphillips.mpp.co@liberal.ola.org)

99 Wellesley Street West, Room 6521, Whitney Block, Toronto, ON M7A 1A8 • T - (416) 325-3628 F - (416) 314-7421 E - [gphillips.mpp@liberal.ola.org](mailto:gphillips.mpp@liberal.ola.org)

[www.gerryphillips.com](http://www.gerryphillips.com)



**From:** Bob Clay [mailto:Bob\_Clay@rougepark.com]  
**Sent:** 10 February 2009 10:11  
**To:** 'lfield@trca.on.ca'  
**Cc:** 'roger.st.louis@td.com'; 'Lewis Yeager'; 'jimrobb@frw.ca'  
**Subject:** Friends of the Rouge Watershed projects in Rouge park

Good morning Larry

In 2008 FRW was provided financial and land access support for 4 reforestation projects in the Bob Hunter Park portion of Rouge Park.

Site 1 [FRW Site C] was atop the newly created berm along the east side of the railroad right of way just north of 14<sup>th</sup> Avenue .

Site 2 [FRW site D] was at the extreme north end of BHP just west of Reesor Road . At this site FRW planted a mix of meadow and forest plants as well as excavating 2 small wetlands and creating a low berm along the railroad ROW.

Site 3 [FRW Sites E to I] was in the southwest corner of BHP. In this area FRW constructed a low berm along the railroad ROW and planted meadow and forest species.

Site 4 [FRW Site A] was a small field south of 14<sup>th</sup> Avenue where FRW Planted meadow and forest species.

All projects were approved by the Rouge Park Alliance and permits to enter were acquired from TRCA as the land title holder. Where excavations occurred the Town of Markham provided site alteration permits as required by their by-laws.

**In 2009 the Rouge Park Alliance has approved continuing work by FRW at sites 1 and 3 in BHP. Please let me know if you wish details on these.**

I have attached a map showing the sites.

I hope this is sufficient for your purposes.

Call if you want more information.

Robert T. Clay

Habitat Restoration Manager,

**Rouge Park**

905 713 6022



August 12, 2008

Dear Friends of the Rouge River Watershed and Prospective Partners:

**Re: Rouge Park Support for Friends of the Rouge Watershed Ecological Restoration Projects**

The Rouge Park Alliance recently approved a Natural Heritage Action Plan for the restoration of approximately 700 hectares (7 million square metres) of forest, riparian, wetland and meadow habitat in Rouge Park over the next several years. Community based volunteer groups form an essential part of the mechanism that Rouge Park will use to achieve this ambitious target. Over the last decade, Friends of the Rouge Watershed (FRW) has been such a community group, and has demonstrated the ability to successfully implement projects that contribute significantly to our goals. For example, FRW's restoration projects have been consistently ranked as high priority by the Rouge Park Alliance Heritage Projects Review Subcommittee comprised of:

- Rouge Park's Chair, General Manager and Natural Heritage Programme Manager;
- Ontario Ministry of Natural Resources;
- Toronto and Region Conservation Authority;
- City of Toronto, Town of Markham, Town of Richmond Hill and York Region;
- Transport Canada; and
- Toronto Zoo.

Friends of the Rouge Watershed has developed very successful ecological restoration methods which utilize good site preparation, native trees, shrubs and wildflowers, and locally collected seed, to help restore a rich and biodiverse mixture of forest, riparian, wetland and meadow habitats. FRW projects involve thousands of youth and community volunteers in environmental education and action. We are looking forward to a continuation of the partnership with the Friends of the Rouge Watershed in 2009 and the years beyond. In particular, we expect to provide up to 20 hectares per year of priority restoration sites for FRW and funding of up to \$5,000/hectare.

We believe that working cooperatively with successful charitable groups like FRW will continue to contribute to:

- expansion of core habitat and linkage areas, nature reserves and ESAs in Rouge Park;
- protection and expansion of habitat for species at risk;
- reduction of runoff and erosion to improve water quality, stream flow and fish habitat;
- expansion of opportunities for compatible outdoor education, recreation and tourism;
- absorption of CO<sub>2</sub>, production O<sub>2</sub>, filtration of air pollutants and moderation of air temperature;
- involvement of youth and community volunteers in ecological education and action.

Rouge Park is pleased to support FRW's efforts to raise the additional funding necessary to restore diverse forest, wetland, riparian and meadow habitat in Rouge Park.

For further information regarding Rouge Park and our ongoing support for Friends of the Rouge Watershed, please contact Bob Clay (905) 713-6022 at the Rouge Park office.

Yours truly,



Lewis Yeager  
General Manager  
Rouge Park



# *Hillside Outdoor Education School*

2259 Meadowvale Rd., Scarborough, ON. M1X 1R2 • Tel: 416 396-6963 • Fax: 416 396-3292

October 29/08

Friends of the Rouge Watershed  
2259 Meadowvale Rd.  
Scarborough, ON  
M1X 1R2

Dear Friends of the Rouge Watershed,

The staff and students of Hillside Outdoor Education School have enjoyed our ongoing partnership with FRW since 1999. It provides students with many opportunities to plant trees and wildflowers, create habitat structures and collect wildflower seeds.

FRW projects involve students in environmental education and citizenship activities which contribute to the health and beauty of the Rouge Park and Watershed.

Hillside Outdoor Education School is pleased to provide this letter of in-kind support for FRW ecological projects. Our support includes:

- providing buses to transport students to the planting sites;
- 2-4 Hillside staff members who assist FRW staff in plantings;
- use of Hillside facilities, including washrooms and lunchrooms;
- provision of supplies such as garden gloves, boots, water, etc.;
- liaison with visiting teachers and students;
- coordination of program calendar with other TDSB schools

The estimated value of Hillside's contribution is \$26,500/year. In addition, the in-kind involvement of TDSB students and co-op students has an estimated in-kind value of \$30,000/year.

As Friends of the Rouge Watershed share office space in Hillside School, we work together on the Ontario wide EcoSchools Program. Components of this program are energy conservation, waste minimization and school ground greening.

Students involved in programs with Hillside and FRW leave with a better understanding of the Rouge Park, watershed protection, and conservation of land, energy and resources. These students take this knowledge and understanding back to their own schools, homes and communities.

We are looking forward to ongoing conservation and education partnerships with FRW.

Sincerely,

Jane Wadden  
Site Supervisor  
Hillside O.E. School  
2259 Meadowvale Rd.  
Scarborough, On.  
M1X1R2





Friends of the Rouge Watershed  
2259 Meadowvale Road  
Toronto, Ontario, M1X 1R2

Dear Friends of the Rouge Watershed:

Over the last 6 years, Toyota Canada Inc. has contributed almost \$100,000.00 towards the planting of more than 100,000 native trees and wildflowers to help protect and expand designated environmental sensitive areas within the Rouge Park. In addition, Toyota Canada brings approximately 200 employees to the Rouge Park each year during Environment Week to plant trees and wildflowers with FRW.

Over the last 4 years, Toyota Canada has also provided FRW with the free use of a Toyota 4 x 4 truck to help transport trees, supplies and staff for habitat restoration work. There is a possibility that we may be able to donate a full-sized Tundra 4 x 4 truck for use in the future.

Toyota Canada is committed to researching and developing real-world alternative energy vehicles as well as low emission vehicles for today, and for the future. Over the last two years, Toyota Canada associates have enjoyed bringing the Prius hybrid vehicle to several of FRW's "Clean Air and Green Watershed" events. The Prius integrates electric and gas motors to achieve outstanding fuel efficiency and ultra low emissions. The completely redesigned second generation Prius has less emissions, better fuel economy, is larger and more powerful than its predecessor. And, of course, there are two new hybrid SUV's; the Highlander and Lexus 400H.

Participating in FRW's "Clean Air and Green Watershed" project is a great opportunity for Toyota Canada to share our environmental awareness with the local community. We hope to be able to have the opportunity to collaborate on similar community-based projects in 2006 and beyond.

Sincerely,

Vince Moffatt  
Manager Administration





Dear Friends of the Rouge Watershed Partners,

Unilever Canada is pleased to provide this letter of support for Friends of the Rouge Watershed (FRW) and their community projects.

FRW plants approximately 20,000 native trees and wildflowers within the Rouge River Watershed each year with the help of more than 2,000 volunteers. In addition to their restoration work within the Rouge-Park – the largest urban park in North America, FRW also provides presentations to both elementary and secondary schools on diverse topics such as climate change and the One Tonne Challenge, energy efficiency and waste reduction, pollution prevention and habitat restoration. FRW provides these presentations in the regions of York, Durham and Toronto. With both the restoration and climate change efforts FRW allows students to experience and help nature from both inside and outside their classrooms.

FRW has received many awards for their expertise, dedication and effectiveness in the areas of environmental education, planning, restoration and protection.

Unilever Canada has been a great supporter of FRW for the past two years. We have provided FRW with \$10,000 to help protect, restore and enhance priority Rouge Park sites. Dedicated Unilever staff have assisted FRW with building bird boxes, erecting raptor posts and planting trees, shrubs and wildflowers. We have also enjoyed nature hikes led by FRW.

We wish FRW continued to success in their efforts to raise funds to help restore the health of the Rouge River Watershed and to improve environmental knowledge, responsibility and health.

Sincerely,

Carla Tomayer  
905-948-5057  
carla.tomayer@unilever.com

# How was the presentation? Can we have your feedback?

Friends of the Rouge Watershed  
2259 Meadowvale Road  
Scarborough, Ontario M1X 1R2  
fax: 416.396.3292

To assess how well we are doing we ask teachers to please  
complete this questionnaire and return it to the above address; if you are  
within the TDSB you can return it to Hillside Outdoor Education School, mailing route SE.

School Name (optional) James Robinson P.S. Date of Visit (optional) Nov/08

1. What were your objectives for having a presentation? (check all that apply)

- ☒ Provide a new voice to issues you have already discussed with your students
- ☐ Introduce a strand not yet covered in the classroom
- ☐ Further expand on a topic already covered in the classroom
- ☐ Other \_\_\_\_\_

2. Did you have an opportunity to discuss incorporating your curriculum objectives into the presentation?

☐ Yes partly ☐ No

3. Overall, how successful was the presentation in addressing and achieving your expectations?

Comments: Students could recall information & learn new ones  
(Highly) 5 4 3 2 1 (Not at all)

4. To what extent did the Friends of the Rouge staff meet the needs of the students?

Comments: Answered questions raised by students  
(A great deal) 5 4 3 2 1 (Not at all)

5. To what extent did you pre-teach for this experience? (A great deal) 5 4 3 2 1 (Not at all)

Comments: \_\_\_\_\_

6. To what extent will you follow up on this experience? (A great deal) 5 4 3 2 1 (Not at all)

Please explain: The school is already running a recycling program

7. Please indicate if you are:

- ☒ an EcoSchool
- ☐ planning on becoming an Eco School
- ☐ interested in information about EcoSchools

8. Please comment on how you feel that we can better serve your needs, i.e. materials, delivery, content.

Please use the other side of this form for additional comments.

① Perhaps a school wide presentation  
② Free plantings for the grade 4/5 classes in June/08



Mandate

Friends of the Rouge Watershed (FRW) will work with youth and community to protect, enhance and restore ecosystem beauty, health & integrity. FRW will form productive conservation partnerships with schools, community groups, religious organizations, businesses, landowners, municipalities, government agencies, community leaders, foundations and environmental groups.

# How was the presentation? Can we have your feedback?

Friends of the Rouge Watershed  
2259 Meadowvale Road  
Scarborough, Ontario M1X 1R2  
fax: 416.396.3292

To assess how well we are doing we ask teachers to please  
complete this questionnaire and return it to the above address; if you are  
within the TDSB you can return it to Hillside Outdoor Education School, mailing route SE.

School Name (optional) Ruth Kostash - Coppard Glen P.S. Date of Visit (optional) Dec 8, 2008

1. What were your objectives for having a presentation? (check all that apply)

- ☒ Provide a new voice to issues you have already discussed with your students
- ☐ Introduce a strand not yet covered in the classroom
- ☒ Further expand on a topic already covered in the classroom
- ☐ Other \_\_\_\_\_

2. Did you have an opportunity to discuss incorporating your curriculum objectives into the presentation?

☒ Yes

☐ No

3. Overall, how successful was the presentation in addressing and achieving your expectations?

(Highly) 5 (4) 3 2 1 (Not at all)

Comments: Presentation dovetailed nicely into what we have discussed in class. More specifics on the Rouge (maps, pictures) would be helpful

4. To what extent did the Friends of the Rouge staff meet the needs of the students?

(A great deal) 5 (4) 3 2 1 (Not at all)

Comments: Students were engaged and enjoyed the presentation.

5. To what extent did you pre-teach for this experience? (A great deal) 5 4 (3) 2 1 (Not at all)

Comments: Presentation followed nicely in ecosystems unit.

6. To what extent will you follow up on this experience? (A great deal) 5 (4) 3 2 1 (Not at all)

Please explain: We will review ways in which students can help the environment - discuss the impact they can have.

7. Please indicate if you are:

☐ an EcoSchool

☒ planning on becoming an Eco School

☐ interested in information about EcoSchools

8. Please comment on how you feel that we can better serve your needs, i.e. materials, delivery, content.

Please use the other side of this form for additional comments.

Activities are great. Students enjoy being actively involved in the presentation.

Friends of the Rouge



Watershed

## Mandate

Friends of the Rouge Watershed (FRW) will work with youth and community to protect, enhance and restore ecosystem beauty, health and integrity. FRW will form productive conservation partnerships with schools, community groups, religious organizations, businesses, landowners, municipalities, government agencies, community leaders, foundations and environmental groups.





361A Old Finch Ave.  
Scarborough, ON M1B 5K7  
[www.torontozoo.com](http://www.torontozoo.com)

Telephone: 416.392.5900  
Fax: 416.392.5934

**Chairman**  
Councillor Raymond Cho  
**General Manager & CEO**  
Calvin J. White

November 4, 2008

Dear Friends of the Rouge Watershed:

Toronto Zoo supports the preservation and construction of wetlands to preserve watershed functions and integrity.

Often overlooked in wetland inventories, vernal pools are important contributors to watershed resources. They may provide significant volumes of water to hydrological systems and several species are dependent on these temporary fishless water bodies for completion of their life cycle.

We support the protection of existing vernal wetlands and programmes to create vernal pools and ponds during ecological restoration work.

Sincerely,

Bob Johnson, Curator  
Amphibians and Reptiles

February 8, 2005

Dear Friends of the Rouge Watershed (FRW) Partners:

I have been the curator of invertebrates at the Toronto Zoo for 19 years. The Toronto Zoo is located in the Rouge Park and I have observed and studied local butterflies, moths and insects during this period.

The Rouge Park is a valuable refuge for butterfly and moth populations. Careful efforts to protect and expand native plant communities within and around the Rouge Park could save locally rare species and valuable genetic diversity and eventually act as a source for re-populating surrounding areas.

During the months of July and August, I visit FRW restoration sites within the Rouge Park. Due to these visits, I am convinced that FRW restoration efforts were significantly expanding and enhancing habitat opportunities for many local butterflies, moths and insects, including regionally rare species (e.g. Little Glassy Wing, Green Comma and Appalachian Browns) and the federally vulnerable Monarch.

FRW's restoration of the Lucas site has changed 45 acres of farm monoculture into a diverse meadow of wildflowers with excellent habitat for thousands of butterflies and moths. This has become even more significant due to the spread of swallow wart in the Rouge Valley's old meadows. The butterflies observed at FRW restoration sites include:

Monarchs, Viceroy, Red Admiral, White Admiral, Questionmark, Tiger Swallowtail, Eastern Black Swallowtail, Great Spangled Fritillary, Alfalfa and Clouded Sulphurs, Cabbage Whites, Mourning Cloaks and a variety of Skippers.

Simply planting trees can displace valuable meadow habitats for butterflies, moths and birds, however, FRW projects are expanding and enhancing habitat for butterflies, moths, insects and birds by:

- Protecting meadows, wetlands and natural areas around the Rouge Park;
- Planning and restoring to maintain many areas of diverse meadow communities;
- Restoring more than 45 acres of farm mono-cultures to diverse plant communities each year;
- Using clumped tree plantings to create spatially rich meadows which will gradually regenerate to climax forest habitat;
- Interrupting tile drains to create wet meadow habitats, thus supporting rich species diversity;
- Planting 5,000+ wildflowers of 50+ native species each year in seed production and dispersal plots;
- Collecting and dispersing thousands of native wildflower seeds on FRW restoration sites;
- Planting flowering native shrubs and deciduous trees to provide food and shelter for larval and adult stages;
- Creating log piles to provide temporary and over wintering shelter for adult and pupal stages;
- Leading nature walks with thousands of children each year to nurture nature appreciation in the next generation.

Based on my visits to FRW restoration sites and my understanding of their restoration approach and methods, I am pleased to provide this letter of support for FRW's habitat restoration projects.

Sincerely,



Tom Mason  
Curator of Invertebrates  
Toronto Zoo

### School Spring Plantings 2009

April 2009

Date	School	Location	Number of Students	Grade
Apr 7	Greensborough PS	Markham	65	7 and 8
Apr 8	Highgate PS	Markham	61	7
Apr 9	Highgate PS	Markham	60	8
Apr 14	Hillside	Toronto	60	7 and 8
Apr 15	Hillside	Toronto	60	7 and 8
Apr 16	Hillside	Toronto	30	7 and 8
Apr 21	All Saints CS	Markham	135	7
Apr 22	All Saints CS Cedarwood PS	Markham	135	8
Apr 23	Heritage Park and Hillside	Toronto	60	4 to 8
Apr 28	Rouge Valley	Toronto	30	7
Apr 29	Rouge Valley St. Mary CS	Toronto Pickering	32 30	8 10 and 11
Apr 30	Rouge Valley Maplewood	Toronto	34 45	2 and 3 Adults
<b>Total (Toronto)</b>			<b>381</b>	
<b>Total (Markham)</b>			<b>456</b>	

May 2009

Date	School	Location	Number of Students	Grade
May 5	Little Rouge PS	Markham	40	7
May 6	Little Rouge PS	Markham	50	8
May 7	Rouge Valley	Toronto	51	2, 3 and 4
May 12	Maplewood HS	Toronto	45	Adults
May 13	Rouge Valley	Toronto	53	5 and 6
May 14	Coledale (unconfirmed)	Markham	30	7
May 19	Maplewood HS	Toronto	45	Adults
May 20	Dalphi	Toronto	35	9
May 21	Coledale (unconfirmed)	Markham	30	8
May 26	Maplewood HS	Toronto	45	Adults
May 27	Wilclay PS	Markham	60	8
May 28	Wilclay PS	Markham	60	8
<b>Total (Toronto)</b>			<b>274</b>	
<b>Total (Markham)</b>			<b>270</b>	

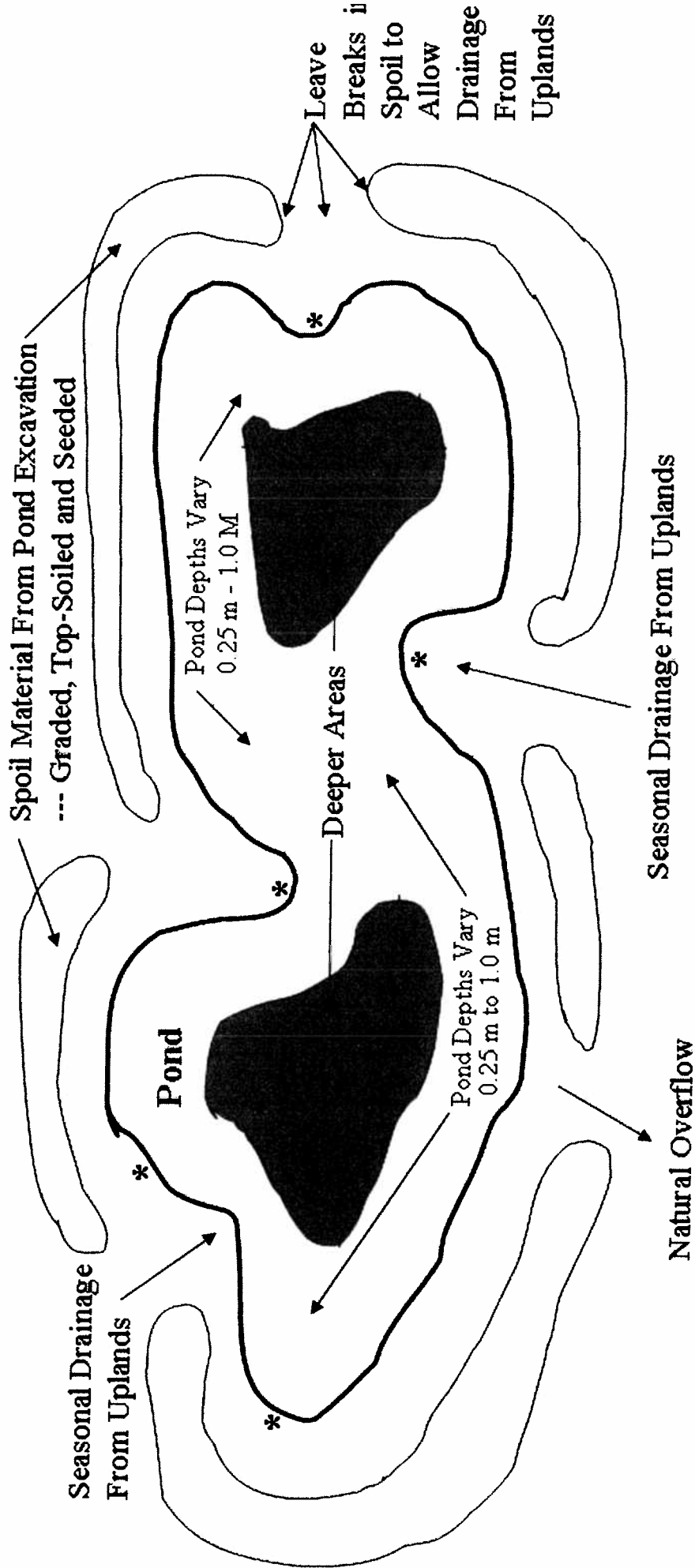
June 2009

Date	School	Location	Number of Students	Grade
June 2	Blis Carman	Toronto	60	7 and 8
June 4	James Robinson	Markham	45	4
June 10	Maplewood HS	Toronto	45	Adults
<b>Total (Toronto)</b>			<b>105</b>	
<b>Total (Markham)</b>			<b>45</b>	

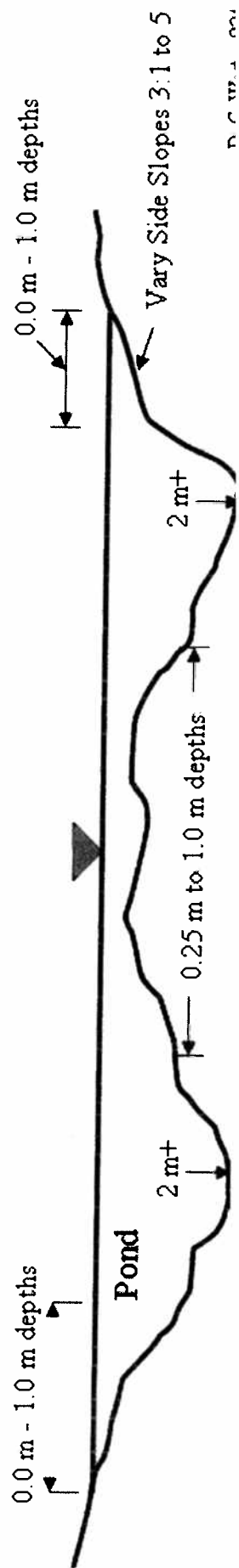


# TYPICAL POND PLAN

\* Note Irregular Shoreline Configuration \*



## TYPICAL POND SECTION AND DEPTH RANGES







M. Jim Robb  
General Manager  
Friends of the Rouge Watershed Inc.  
2259 Meadowvale Rd  
Scarborough, ON  
M1X 1R2

*Votre file Votre référence*

*Our file Notre référence*

3016552

March 28, 2003

Dear M. Robb:

Subject: CONFIRMATION OF REGISTRATION

We are writing to confirm that Friends of the Rouge Watershed Inc. is registered with the Canada Customs and Revenue Agency as a Charitable Organization.

BN/Registration Number: 88878 1028 RR0001

Effective Date of Registration: April 1, 2001

We hope the foregoing is satisfactory.

Please do not hesitate to contact Client Assistance, at 1-800-267-2384 if you wish to discuss this matter further. You can also write to us at the Charities Directorate, Canada Customs and Revenue Agency, Ottawa, Ontario, K1A 0L5.

Yours sincerely,

Rhianna Renault  
Client Assistance  
Charities Directorate

Appendix G

JUL 10 1998

For Ministry Use Only  
L'usage exclusif du ministère

Ontario Corporation Number  
Numéro de l'association en Ontario

1296170



Ministry of  
Consumer and  
Commercial Relations

Ministère de  
la Consommation  
et du Commerce

**LETTERS PATENT**  
This application constitutes the charter  
of the corporation which is issued by  
those Letters Patent dated this

**LETTRES PATENTES**  
La présente requête forme la charte de la  
compagnie constituée en personne morale  
par lettres patentes datées du

JUNE 30 JUN 1998

Le Ministre de la  
Minister of Consumer  
and Commercial Relations Consommation et du Commerce

*John D. [Signature]*  
Director / Directeur

Trans Code <b>A</b> 18	Line No. <b>0</b> 20	Stat <b>0</b> 28	Comp Type <b>B</b> 29	Method Incorp. <b>1</b> 30
Share <b>N</b> 31	Notice Req'd <b>Y</b> 32	Jurisdiction <b>ONTARIO</b> 33 47		

**APPLICATION FOR INCORPORATION OF A CORPORATION WITHOUT SHARE CAPITAL  
REQUÊTE EN CONSTITUTION D'UNE ASSOCIATION**

Form 2  
Corporations  
Act  
Formulaire  
numéro 2  
Loi sur les  
compagnies et  
associations

1. The name of the corporation is/Nom de l'association:

F	R	I	E	N	D	S		O	F		T	H	E		R	D	U	G	E		W	A	T	E	R		S	H	E	D		
I	N	C																														

2. The address of the head office of the corporation is/Adresse du siège social:

1 Braeburn Blvd.

(Street & Number or R.R. Number & if Multi-Office Building give Room No.)  
(Rue et numéro ou R.R. et numéro et, s'il s'agit d'un édifice à bureaux, numéro du bureau)

Scarborough, Ontario

(Name of Municipality or Post Office)  
(Nom de la municipalité ou du bureau de poste)

M1J2P9  
(Postal Code/Code postal)

3. The head office of the corporation is situated in/Le siège social se trouve à:

City of Toronto

(Name of Municipality, Geographical Township)  
(Nom de la municipalité, canton)

in the  
dans le

Municipality of Metropolitan Toronto

(County, District, Regional Municipality)  
(Comté, district, municipalité régionale)

4. Address of clubhouse or similar premises (if any) is:

Adresse du local de l'association ou autre endroit utilisé aux mêmes fins, s'il y a lieu:

NOT APPLICABLE

(Street & Number or R.R. Number & if Multi-Office Building give Room No.)  
(Rue et numéro ou R.R. et numéro et, s'il s'agit d'un édifice à bureaux, numéro du bureau)

(Name of Municipality or Post Office)  
(Nom de la municipalité ou du bureau de poste)

(Postal Code/Code postal)

5. The applicants who are to be the first directors of the corporation are:

Requérants appelés à devenir les premiers administrateurs de l'association:

Name in full, including all first, middle names Nom et prénoms au complet	Residence address, giving Street & No. or R.R. No. & Municipality or Post Office and Postal Code Adresse personnelle y compris la rue et le numéro ou la R.R. et le numéro, le nom de la municipalité ou du bureau de poste et le code postal
Kevin O'Connor	6 Plover Road; Scarborough, Ontario; M1G 3L9
Rosita Pollock	85 Bexhill Avenue; Scarborough, Ontario; M1L 3B9
Neera Shukla	966 Essa Crescent; Pickering, Ontario; L1W 2J1





Pilot Insurance Company  
Over 80 Years of Protection Through Local Brokers

## Commercial Insurance Policy Policy Declarations

NAMED INSURED: **FRIENDS OF THE ROUGE WATERSHED INC.** POLICY NUMBER: **CMP 84008553**

The only insurance afforded by this Policy is that which is provided by the forms indicated below.  
Reference should be made to the applicable forms for details.

**Location 1** Address: **2259 MEADOWVALE ROAD, SCARBOROUGH, ON M1X 1R2**

**Insured Occupancy/Operation:** NON PROFIT ASSOCIATION OFFICE

**Other Occupancy:** N/A

**Construction:** BRICK

**Loss, if any, is payable to:** THE INSURED

**Forms and Endorsements: Applicable to Location 1**

Form Number	Coverage and/or Form Name	Deductible (\$)	Co-Insurance	Limits of Insurance (\$)
150000-01	PROPERTY - Multi-Peril			
075700-07	Office Contents	1,000	90%	10,000
400520-02	Replacement Cost Endorsement			Included
450600-04	Flood (higher Deductible on form)			Included
450651-02	Sewer Backup Coverage Endorsement (higher Deductible on form)			Included
403900-04	Earthquake Endorsement	3% Minimum 25,000		Included
1997CP-01	Clarification of Statutory Conditions			
1999CP-01	Fungi and Fungal Derivatives Exclusion			
2000CP-03	Data Exclusion Endorsement			
2002CP-02	Terrorism Exclusion Endorsement			Included

**Location 1 Premium** \$100

**Liability Forms and Endorsements Applicable to this Policy**

Form Number	Coverage and/or Form Name	Deductible (\$)	Limits of Insurance (\$)
C33000-02	LIABILITY		
000102-10	Commercial General Liability Coverage Form		
	CGL Each Occurrence Limit		2,000,000
	Personal and Advertising Injury Limit		2,000,000
	Medical Expense Limit (Any one person)		10,000
	General Aggregate Limit		5,000,000
	Products - Completed Operations Aggregate Limit		2,000,000
	Tenants Legal Liability (Any one premises)		100,000
	Coverage A Per Occurrence Deductible	1,000	
	Property Damage	1,000	
	Bodily Injury	0	
335002-02	Non-Owned Automobile - SPF #6		2,000,000
335200-05	S.E.F. No. 96 Contractual Liability Endorsement		Included
335300-02	S.E.F. No. 99 - Excluding Long Term Leased Vehicle Endorsement		Included
002598-01	O.E.F. 98B - Reduction of Coverage for Lessees Endorsement		Included

CONTINUED ON NEXT PAGE

Date Issued  
April 8, 2008

Company Use  
1319 10 34-0520 0062 R 5741-7

Policy Number  
84008553

Claims Assist  
1-888-88PILOT

Insured Copy



## **Rouge Park Project Screen Application**

### **NAME OF PROJECT:**

Bob Hunter Memorial Park Habitat Restoration 2009

### **PROJECT LEAD AND COMMUNITY GROUP IF APPLICABLE:**

*Rouge Park*  
Friends of the Rouge Watershed Inc. (FRW), Jim Robb  
2259 Meadowvale Road, Scarborough ON, M1X 1R2  
**Telephone:** 416-208-2052 (office) 647-891-9550 (cell)  
**Fax:** 416-396-3292    **Email:** jimrobb@frw.ca    **Website:** [www.frw.ca](http://www.frw.ca)

**PROJECT EXECUTION DATE:** March 2009 to November 2009

### **LOCATION OF PROJECT:**

(Site Plan and Area Map attached to TFT Application)

**INDICATE PROPERTY OWNERSHIP: TRCA**

### **PROJECT DESCRIPTION:**

1. Project Purpose:

Fulfill the Premier's promise to restore Bob Hunter Memorial Park as a green tribute and legacy for Bob Hunter, a great environmentalist.

2. Project Details/Description:

For more information on this project, please consult our February 2009 Markham TFT Application. This community-based habitat restoration project will train and co-coordinate 2000 school and corporate volunteers to achieve the following quantifiable environmental benefits

**Forest Regeneration: 18 ha** prepared and planted with **20,000 trees & shrubs**

**Frog Pond Creation: 4** vernal ponds created for frogs and turtles

**Wetland enhancement: 3.0** ha food plain restored to native vegetation to reduce erosion

## Rouge Park Project Information Submission Package

**Meadow Restoration: 0.5 ha** created and planted with 5,000 native wildflowers

**School Involvement: 1500** + student volunteers involved and educated about Rouge Park

**Community Involvement: 500** community and corporate volunteers involved and educated

**Riparian Plantings: 500** metres planted adjacent to Bob Hunter Park trout stream

**Rouge Park Awareness: 25+** educational nature walks for school and community volunteers

**Native Forest Biodiversity: 40+** kg native tree seed planted

**Wildflower Biodiversity: 40+** kg native wildflower seed planted

**Native Grass Seeding: 50+** kg tall grass prairie and rye seed planted for meadow habitat

**Nesting Boxes: 10+** nesting boxes erected (8 Bluebird, 1 Kestrel, 2 Wood Duck)

**Habitat Structures: 25+** log piles, 2 raptor posts created

**Species at Risk: 2+** endangered species planted (e.g. Butternut, dense blazing star)

**Biomonitoring: 3** before and after surveys birds, amphibians, turtles, butterflies

**Debris Clean-up: 50+** bags of litter removed from Rouge Park

**Invasive Species Control: 1000** m<sup>2</sup> invasive plants (DSV, Phragmites) removed

**Media Events: 2+** media releases for large community and corporate plantings

**Youth Employment: 3** seasonal staff to help water & maintain trees

**Youth Education: 4** co-op students / 6 foreign exch. student volunteers

**Enhanced Hydrology: 36** million litres/year reduction in runoff

**Innovation: 2** Seeding and planting trial and follow-up survey

3. **Site Plan** to be included (restoration prescriptions attached to TFT application) Project size in hectares: 14 (site F-I) + 4 (site C) = **18 hectares**

### **Changes to existing grading:**

Site C is a large berm created by TRCA and Rouge Park in 2008. FRW will not be changing the grade on this site.

On Sites F to I, four small frog ponds will be created based on the attached schematic provided by a retired Ducks Unlimited Engineer (Dave West).

## Rouge Park Project Information Submission Package

If available, FRW plans to retain TRCA restoration services to construct the frog ponds. The pond locations are in tableland areas. FRW has received up-to-date TRCA mapping and the pond locations are not within flood plains or fill regulation areas.

### **Existing and new water features:**

The frog ponds created in 2008 and the four frog ponds proposed for 2009 are marked on the Restoration Site Plan Map.

### **New Plantings:**

The proposed 2009 plantings and 2008 plantings and access points are marked on the Restoration Plan Maps.

### **Existing Infrastructure:**

There are no surface infrastructure features on the planting sites.

### **Access:**

Access points are marked on the Restoration Plan Map. Site C already has a gate and access point off 14th Avenue. Cathy Jefferies of Markham is working with FRW, CN and TRCA regarding the installation of an access control gate to site E.

### **Siltation Fencing:**

No siltation fences are required because no stream or floodplain disturbances are proposed. In wet areas, FRW often uses wood chips to improve soil stability.

### **Signage:**

Temporary sandwich boards signs and banners will be used to acknowledge Markham's TFT, Rouge Park and other partners during planting events. No permanent signage is anticipated for sites F to I because this area will become a nature reserve. The TRCA and Rouge Park will be working with York Region and Markham regarding signage for Site C.

4. Describe the **vegetation that is to be planted** including number of trees, caliber of trees/vegetation and trees/vegetation to be removed, if applicable:

Rouge Park Project Information Submission Package

Table A provides a summary of the trees, shrubs and wildflower species and numbers to be planted at each site. The 14,500 coniferous trees are primarily 2+2 seedlings. The hardwood trees are primarily 150 cm saplings and the shrubs are primarily 60 cm seedlings.

5. Will the project involve the construction of temporary or permanent access roads or **crossing of rail tracks**, pipelines, servicing easements, power lines or municipal roads?

Yes. FRW has permission from CPR staff to safely cross the Havelock rail line to access Site F to I. No access roads will be constructed. However, FRW will use a 4X4 vehicle and trailer to distribute trees, shrubs, mulch, etc. We will seed and plant the temporary access paths in the fall of 2009.

6. Are there any **water wells or septic systems** on or adjacent to the site that would be affected by the project? **No.**
7. Are there any **existing or proposed rivers, streams or swales, ponds or wetlands** within or adjacent to the site that would be affected by the project?

**Yes.** FRW will be working with TRCA to create a frog pond within a swale on site F. FRW will not be disturbing any TRCA defined stream floodplain or fill regulation areas but we will be planting trees and shrubs within the flood plain of the small stream running through the southwest corner of BHMP (Site J).

8. Describe the current **land use** and any proposed changes to land use:

Sites C and F to I are located on public (TRCA) land within Bob Hunter Memorial Park, Rouge Park and the Greenbelt. BHMP was established by the Premier and the province to create a green legacy for a great Canadian environmentalist. The Province, TRCA, Rouge Park and York Region have identified BHMP as a priority area for habitat restoration and nature trails.

FRW received approval to plant Sites C and F to I from the Rouge Park Alliance which includes Markham and York Region elected

## Rouge Park Project Information Submission Package

officials. Attached please find letters of support from Mayor Scarpitti, Deputy Mayor Heath and local Councillor Logan Kanapathi for FRW habitat restoration projects.

Site C is a large berm created by TRCA and Rouge Park. Sites F to I are former farm fields (leases terminated by TRCA in 2009) which are being restored to expand the Box Grove Forest and fulfill Provincial, Rouge Park, TRCA and draft Markham plans to create a healthy Natural Heritage Network.

9. Is the project funded directly or anticipated to be directly **funded** in whole or part by the **Town of Markham**?

**Yes.** FRW is requesting \$30,000 from Markham's Trees for Tomorrow program. This represents 15% of \$198,000 cash value of the project. Please see our attached budget details.

10. Has an **archaeological assessment** been undertaken for the property?

**Yes.** TRCA archeologist (Margie Kennedy) has assessed the sites and the restoration work has been given the green light by TRCA and Rouge Park (subject to final frog pond review). A few isolated artifacts were found on sites F and H. These areas are marked and will be protected from disturbance.

11. Is there any other **proposed park infrastructure** (trails, trail head, park seating, waste bins, interpretive uses, community gardens, tree nursery etc.) identified in the applicable park management plans within or adjacent to the site?

**Yes.** A nature trail is planned on the Site C Berm. FRW will walk the site with Rouge Park, TRCA and other interested staff to stake the trail route and an appropriate no-planting buffer around the trail route and trail heads. No trails or public access are planned for Sites F to I because the area will be a nature reserve.

12. Does the project include the participation of specific **community groups** and/or plantings by the community at large?

## Rouge Park Project Information Submission Package

**Yes.** Approximately 50 school classes (1500 students) and 500 corporate volunteers (Telus, Toyota, Unilever, BDO Dunwoody, etc) will be involved in the BHMP plantings. Please see our Markham TFT application for more detail on schools and corporate plantings and spring planting dates.

The students will be bused to the sites. For BHMP Sites F to I, the bus will park on the southeast side of Don Cousens Parkway near site E to allow the students to unload and load. FRW will have a designated safety person (orange safety vest) to assist the students as they unload, load and cross the Havelock line. The plantings occur in off peak hours (9:30 am to 1:30 pm) and there have been no significant traffic issues.

For Site C. the bus will park off the south side of 14<sup>th</sup> Avenue across from Site C to allow the students to unload and load. FRW will have a designated safety person (orange safety vest) to assist the students as they unload, load and cross 14<sup>th</sup> Avenue.

Similar to 2008, Telus Canada volunteers (Saturday, little traffic) will park in the curb lane on the southeast side of Don Cousens Parkway near Site E. Telus and FRW will inform York Regional Police as we did last year. FRW or CPR will have a Havelock rail line crossing safety person on duty during the 3 hour event as we did last year.

For corporate plantings on the Site C berm. cars will park in a designated area south of 14<sup>th</sup> Avenue as we did last year. FRW will have a designated safety person on duty during corporate planting events to ensure safe crossing of 14<sup>th</sup> Avenue.

### 13. Are you **publicly advertising for volunteer help?**

Most of our plantings are organized school and corporate plantings. We may want to organize a few other community plantings via FRW's website and community contacts. We would be pleased to share our event notices with your Special Events Coordinator

### 14. Construction of wetlands in the Rouge Park may be subject to the Pickering **Airport Site Zoning Regulations?** The proponent will



Rouge Park Project Information Submission Package

have to ensure that this project is in compliance with the Regulations.

The proposed frog ponds are not within the zoned landing or take-off paths for the Pickering airport. In addition, we are creating small frog ponds which will be surrounded by trees and therefore they will not attract large numbers of waterfowl. We will rely on Rouge and TRCA to address this regulation.

15. The project may have to be reviewed with the appropriate **First Nation groups**? The proponent will have to ensure that the review is satisfactorily undertaken.

TRCA and Rouge Park are responsible for this review.

16. List any **other approvals** obtained e.g. TRCA, Region, etc.

This BHMP project was reviewed and approved by a Rouge Park committee which has federal government, provincial government, TRCA, Markham and York Region staff representatives.

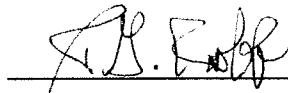
This project was also approved by the Rouge Park Alliance which has elected officials from federal, provincial, regional and local levels of government.

TRCA will issue a site permit for FRW Access to the sites.

**SUBMITTED BY:**

NAME (Please print): Jim Robb

SIGNATURE:

\_\_\_\_\_

DATE:

February 13, 2009

Rouge Park Project Information Submission Package

**Rouge Park Screen Application**  
**Town of Markham**

**NAME OF PROJECT:** \_\_\_\_\_

**RESPONSE PREPARED BY:** \_\_\_\_\_

Development Services Commission  
Town of Markham

**DATE:** \_\_\_\_\_

☐ We have reviewed the project proposal and based on the information submitted; advise that no Town approvals or permits are required.

☐ We have reviewed the project proposal and advise that the following approvals and/or permits are required prior to implementation of the project.

\_\_\_\_\_  
\_\_\_\_\_  
\_\_\_\_\_  
\_\_\_\_\_  
\_\_\_\_\_  
\_\_\_\_\_  
\_\_\_\_\_

☐ We have reviewed the project proposal and advise that the following additional information is required to complete a proper assessment of approval and permit requirements:

\_\_\_\_\_  
\_\_\_\_\_  
\_\_\_\_\_  
\_\_\_\_\_

☐ The proposal may require the approval of the following Agencies:

\_\_\_\_\_  
\_\_\_\_\_

☐ Additional information is attached.