



Town of Markham
Development Services Committee
9 February 2010





Project Overview

- **New parking structure at the Centennial Community Centre/Centennial GO Station**
- **Contract awarded to design-builder SMA in November 2009**
- **Revised concept proceeding through design**
- **Applications pending for Site Plan Approval and Building Permits**
- **Seeking endorsement from Development Services Committee for revised design concept**





Design Concept

Original Concept

- 425 parking spaces
- Three level continuous ramp design
- 4,068 m² building footprint
- 10.0m high structure
- New Parks maintenance building

Proposed Design

- 449 parking spaces
- Three and one-half split level design with level floors
- 3,678 m² building footprint
- 9.25m high structure
- New location for Parks maintenance building





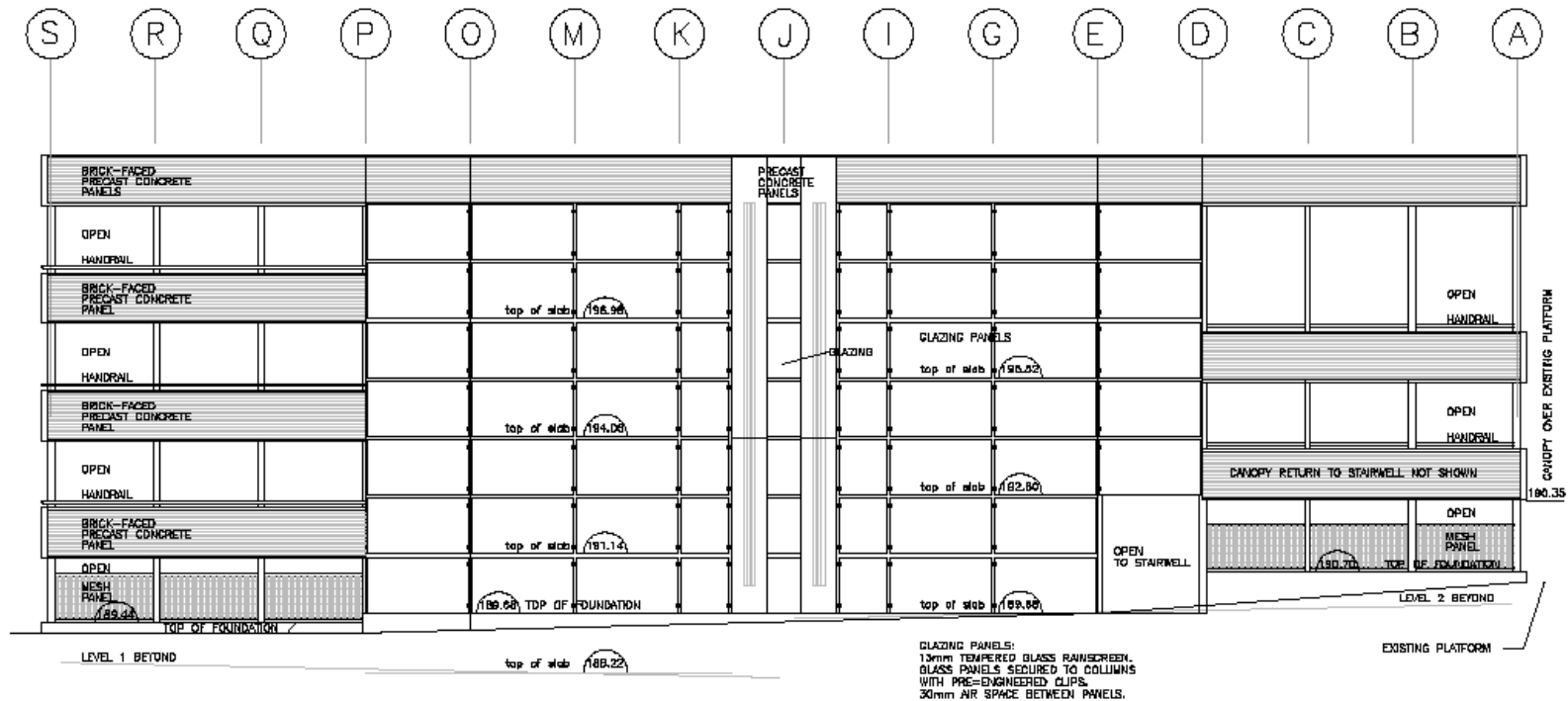
North West Elevation





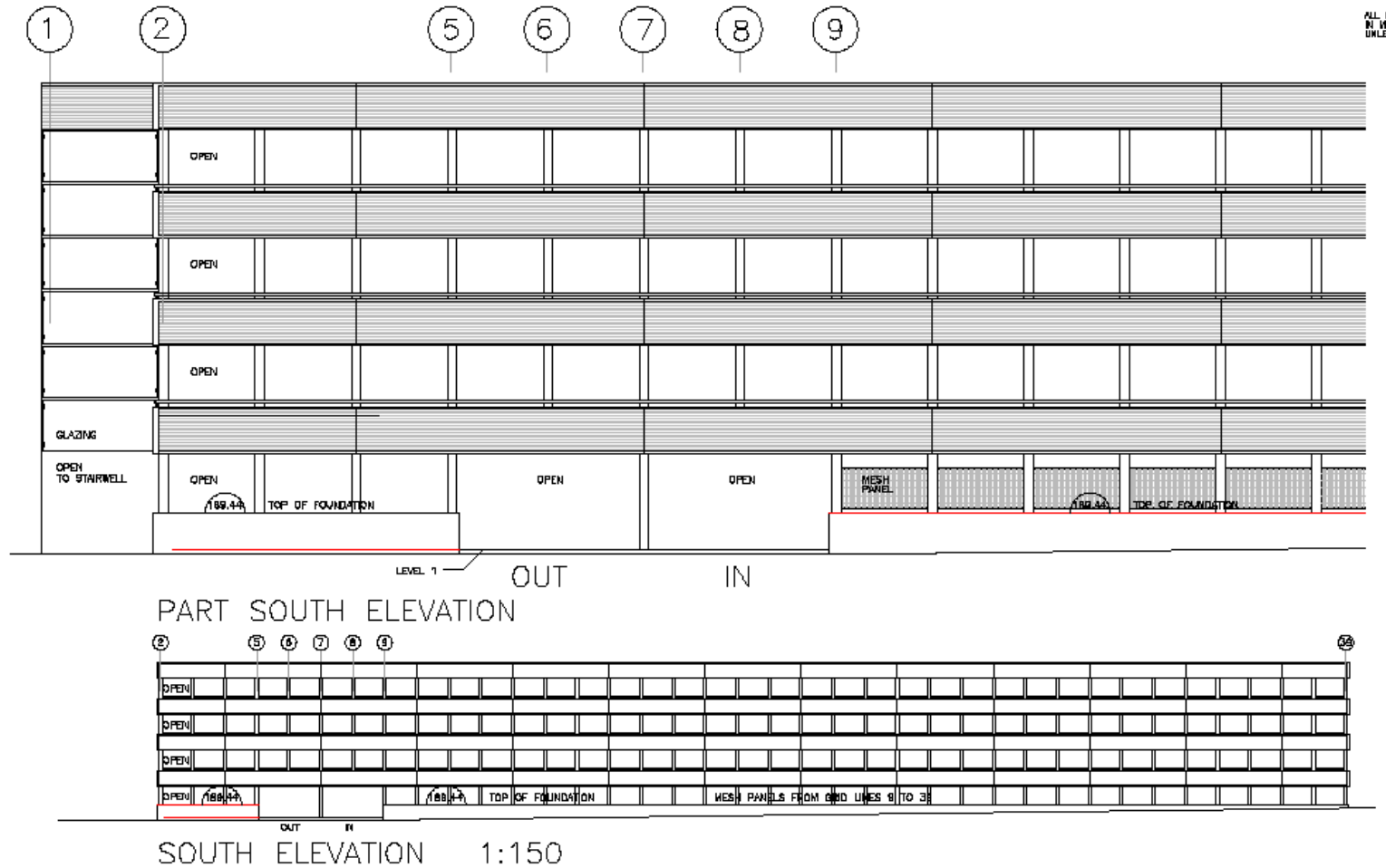
South East Elevation





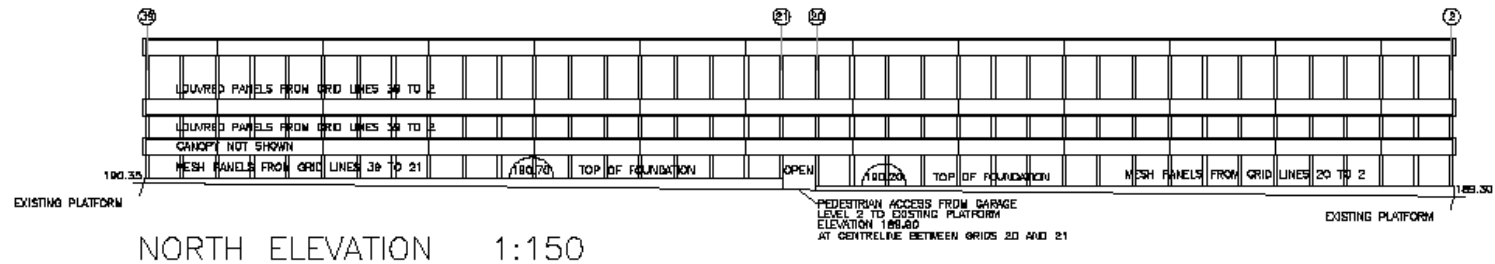
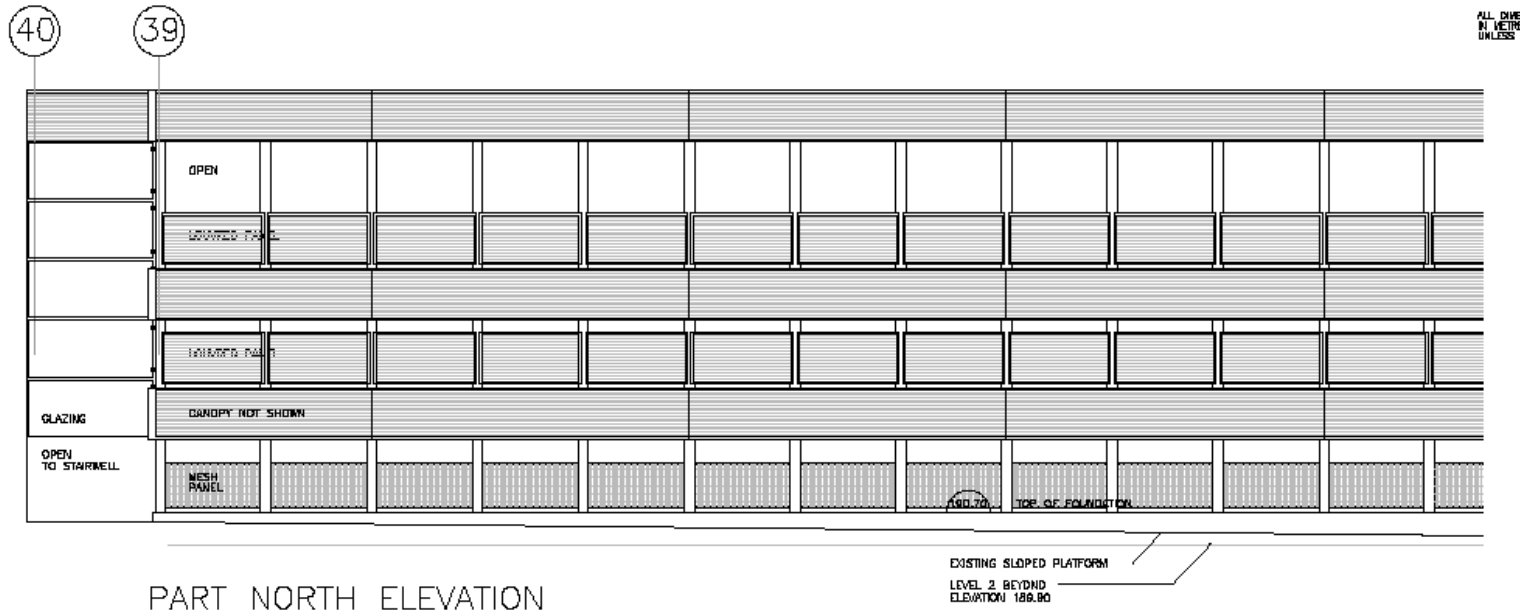
EAST ELEVATION







GLAZING PANELS:
13mm TEMPERED GLASS RAINSCREEN.
GLASS PANELS SECURED TO COLUMNS
WITH PRE-ENGINEERED CLIPS.
30mm AIR SPACE BETWEEN PANELS.





Conditions of Site Plan Approval

- **Submit final plans**
- **Construction access**
- **Bullock Dr improvements**
- **Landscape improvements**
- **Light infiltration**
- **Finalize MOU with GO**
- **Off-site parking**
- **Parks maintenance building**
- **Tree preservation plan**

....In progress

- ✓ **York requirements agreed**
- ✓ **Construction for 2010**
- ✓ **Included in landscape design**
- ✓ **Addressed in lighting design**
- ✓ **Completed Jan 2009**
- ✓ **Provided at Markville Mall**
- ✓ **New location identified**
- ✓ **Included in landscape design**





Next Steps

- | | |
|------------------------------------|-------------|
| • Endorse design concept | February 9 |
| • Complete design | February 26 |
| • Coordinate Site Plan Approval | March 12 |
| • Acquire building permits | March 12 |
| • Relocate transformer (by others) | March 15 |
| • Begin construction | March 22 |



