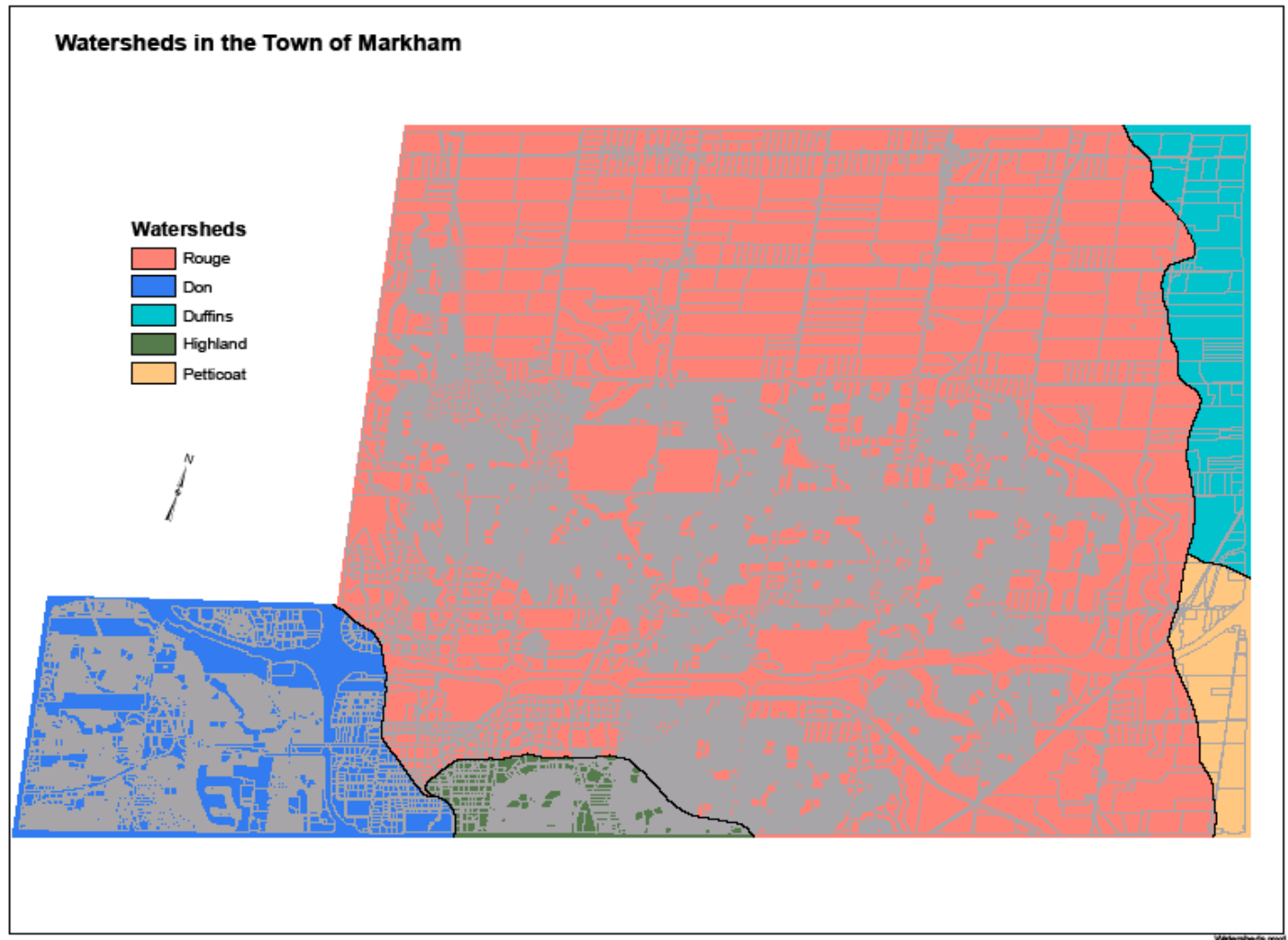


Don River Watershed Plan

**Joint Town of Markham/TRCA
Presentation to Development
Services Committee**

April 27, 2010

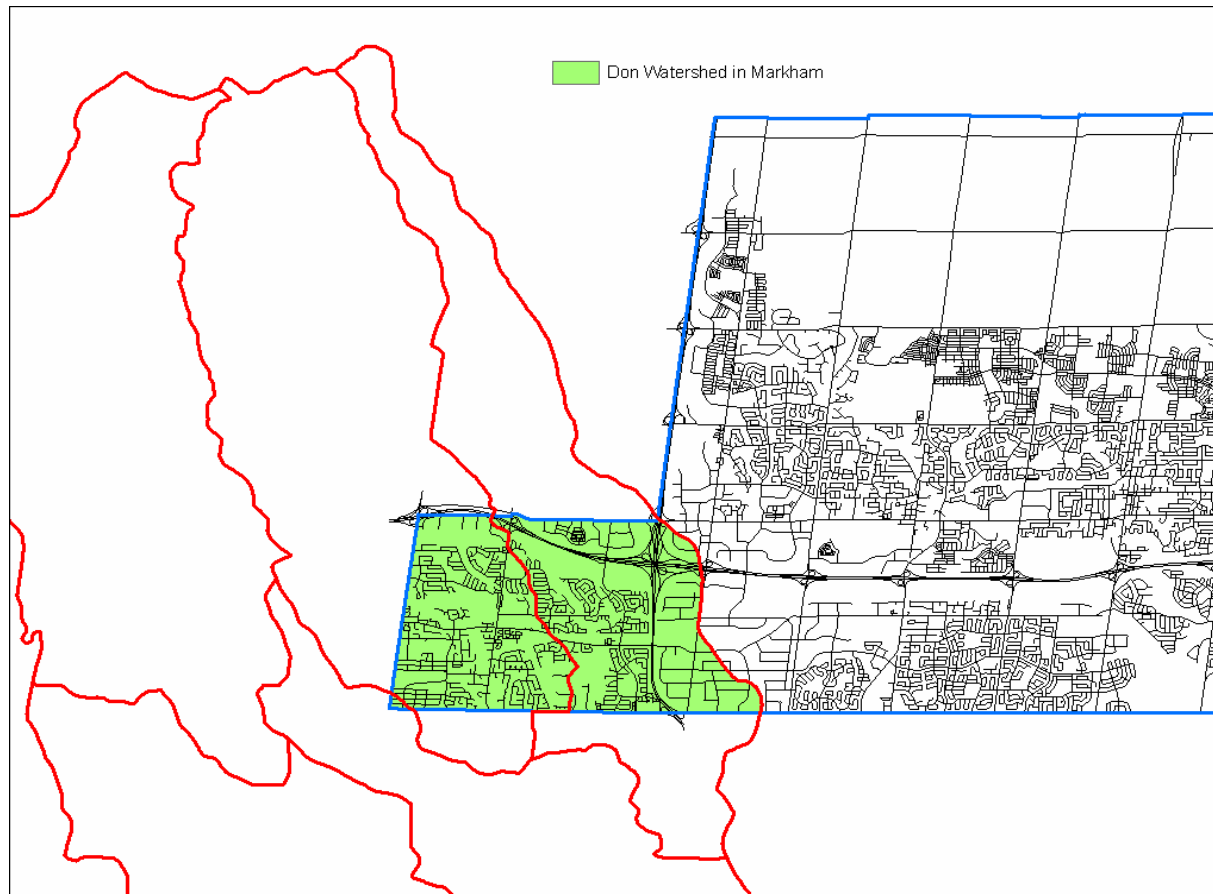
Watersheds in the Town of Markham



Introduction Don River Watershed Plan

- Study was initiated in 2006 and completed in 2009
- There is also an Implementation Guide accompanying the Plan
- Prepared by TRCA staff and Consultants
- Advice from: 1) Don Watershed Regeneration Council
2) Municipal Technical Advisory Committee
- 1.2 million residents live within its boundary
- The Don Watershed covers an area of 360 sq. km
- Don River Watershed in Markham 25.27 sq km
- Area of Don River Watershed in Markham is 11.92% of the Total Area of the Town of Markham.

Don River Watershed – Markham Context





Don River Watershed Plan - Beyond Forty Steps

Presentation to Markham Development Services Commission
April 27, 2010



A map of the study area in the Nashville, Tennessee region. The map shows the Cumberland River flowing from the north to the south, and the Tennessee River flowing from the west to the east. A yellow circle highlights the study site, which is located in the northern part of the area, near the confluence of the Cumberland River and the Tennessee River. The map also shows various roads and land parcels.





Watershed Planning Objectives



- Fill gaps and update science
- Model stormwater management retrofit scenarios in 905
- Update management strategies
- Set regeneration priorities
- Prepare concept site plans to illustrate “on the ground” implementation



Key findings



- Important gains since Forty Steps to a New Don (1994)
- We are “holding the line” on the further degradation of the watershed
- We must take advantage of every opportunity for improvement ...and be innovative!



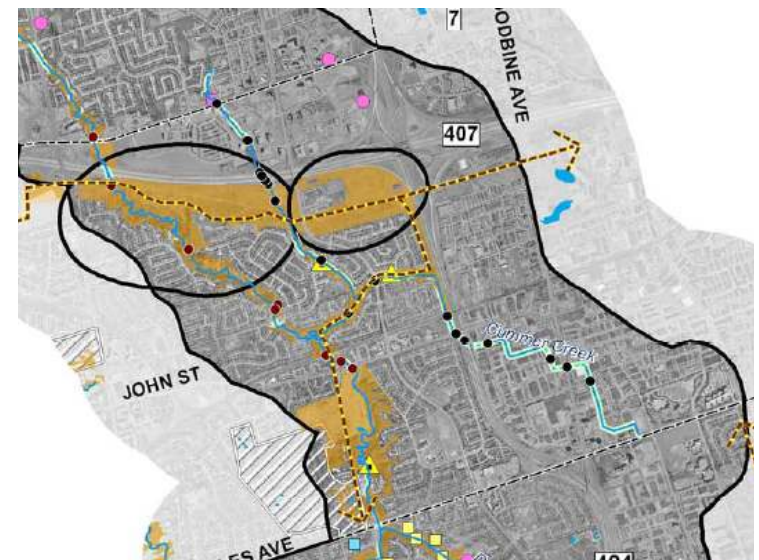
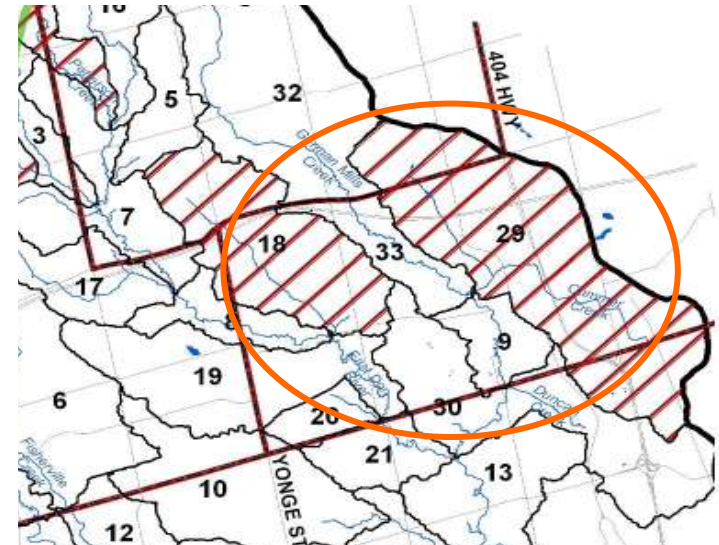
Three Strategic Themes

1. Build, re-build, and retrofit our communities to restore water balance and improve sustainability
2. Regenerate the aquatic and terrestrial landscapes
3. Engage the people of the Don



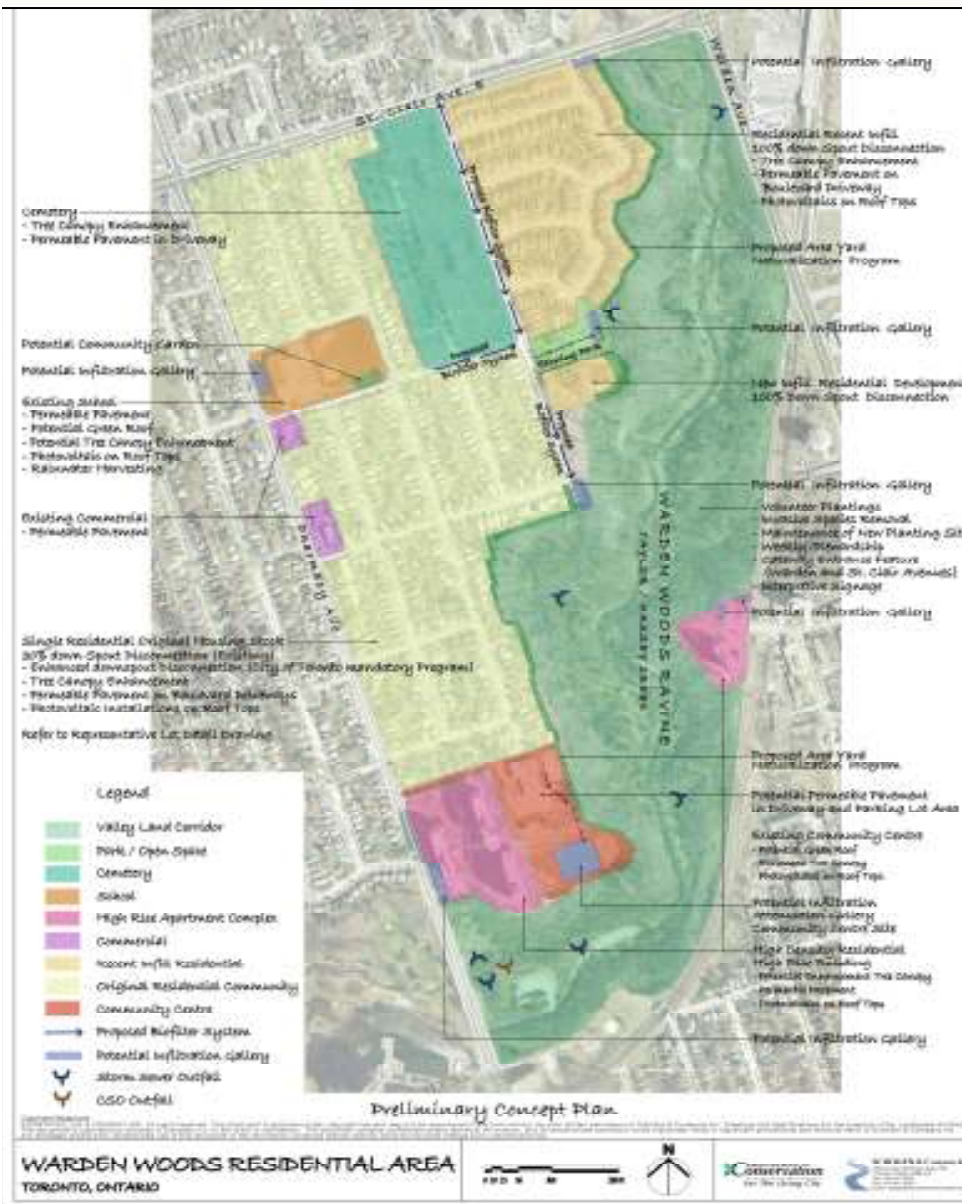
Priorities for Town of Markham

- Continue flood risk reduction work
- Neighbourhood retrofits – SWM, greening
- Engage the community





Concept Site Plans

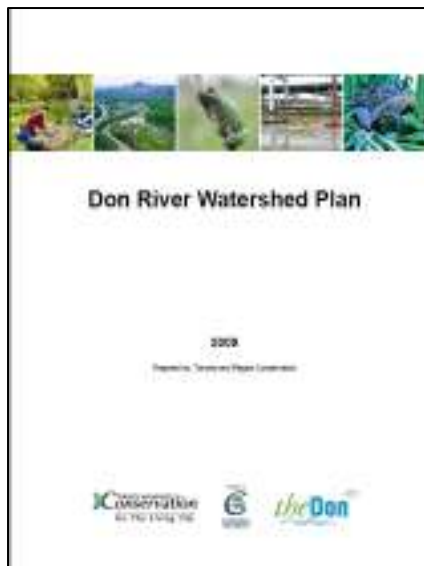


- Ravine Challenges - *Mud Creek*
- Sustainable Neighbourhoods - *Warden Woods*
- Regenerating Natural Heritage - *Maple Quonset Hut site*
- Industrial/Commercial Makeover
- Bold Steps - *Mouth of the Don*

Any suggestions for candidate sites in Markham?



Plan Approval and Implementation Process



- Don Watershed Regeneration Council approved the plan July/09
- Approved by TRCA Board – Sept./09
- Distribution and request for municipal councils to support the plan and work with TRCA on implementation
- New Don Watershed Regeneration Council formed in March/10



Thank you

