

Update on Angus Glen Community Park

Part A
Development Services Committee
December 6, 2011



Agenda

- Overview of Project Background
- Current Project Status
- Proposed Park Program and Activities
- Revised Master Plan: Concepts 'A' and 'B'
- Proposed Project Schedule
- **Seeking Authorization to Proceed to a Community Information Meeting in January 2012**



Location and Context



2007 Community Preferred Master Plan



Proposed Park Program:

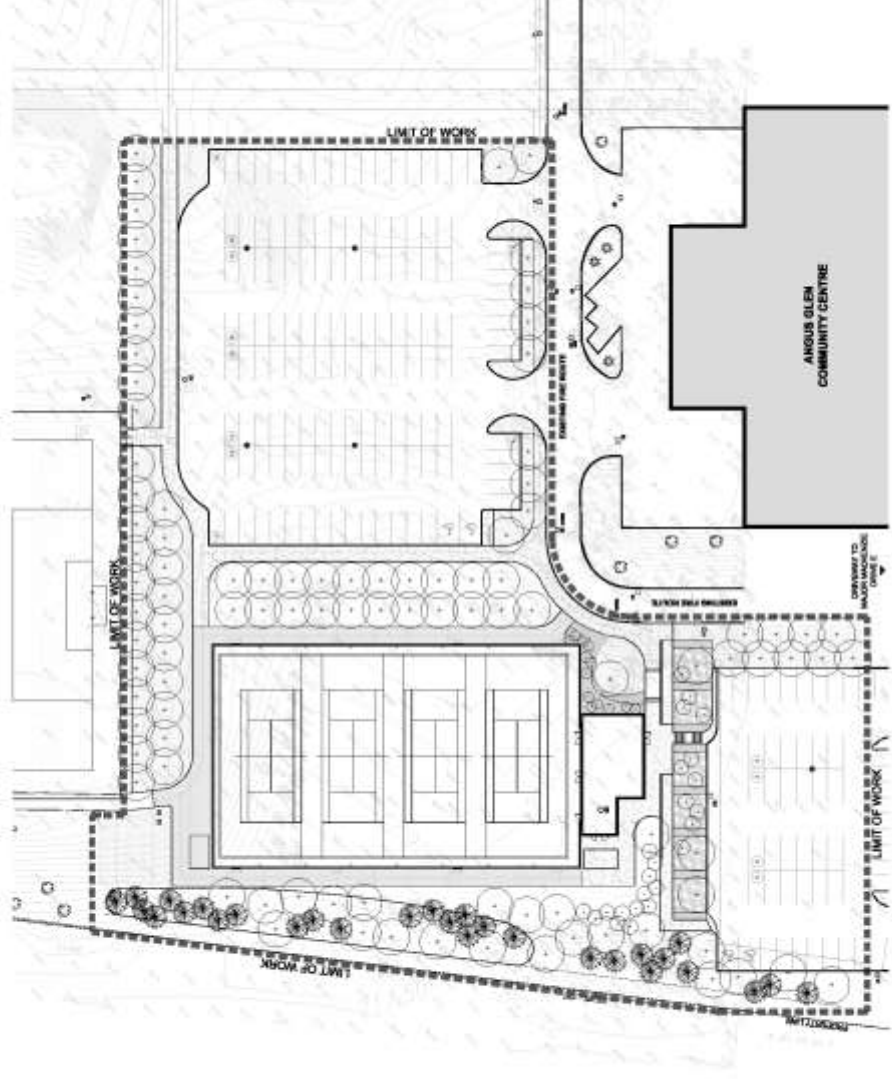
- Full Size, Lit, Soccer Field
- Junior Soccer Field
- Four Tennis Courts
- Junior / Senior Children's Playgrounds
- Park Pavilion and Park Washrooms
- Interactive Waterplay (summer) and Outdoor Artificial Ice Surface (Winter)
- Multi-purpose Court
- Mini-Skate Park
- Walkways and Trials
- Additional Parking
- (Future) Park Maintenance Building



Phase 1: Soccer Field (2008 – 2009)



Phase 2: Tennis Structure & Parking (2010 – 2011)



Phase 3: Revised Master Plan

- New plan is required to respond to the Town's:
 1. Integrated Leisure Master Plan
 2. Diversity Action Plan
 3. Green print – Sustainability Plan
 4. Accessibility Guidelines
 5. Infrastructure Stimulus and RInC Projects
- New Park Program and Elements
- New Design Direction
- New Master Plan Options (A and B)



Master Plan Option A



(Rectilinear Form System)

- Park Pavilion and Washrooms
- Children's Playground Areas
- Interactive Water Play
- Badminton courts
- Mini-skate park
- Multi-use court
- Fitness Stations
- Lawn Areas
- Walkways and Trials



Master Plan Option B



(Curvilinear Form System)

- Park Pavilion and Washrooms
- Children's Playground Areas
- Interactive Water Play
- Badminton courts
- Mini-skate park
- Multi-use court
- Fitness Stations
- Lawn Areas
- Walkways and Trials



DESIGN CONSIDERATIONS

FOOD & FAMILY

- Large open spaces for family gatherings / picnics
- Open air pavilions
- Shade trees



DISPLAY

- Cultural showcase
- Banners / murals / art
- Multi-use area for programmed cultural displays



DESIGN CONSIDERATIONS Cont.....

SHADE & NATURAL PARK ELEMENTS

- Open lawn with shade trees at outer edge
- Trellis structures
- Pavilion / shelters



OPEN SPACE/FLEXIBLE/PROGRAMMED

- Open lawn common / flexible programming
- Plaza space / programmable activity space
- Water feature
- Outdoor terraced seating
- Arrival gateway feature
- Passive landscape area with trees



DESIGN CONSIDERATIONS Cont.....

INTEGRATED ACCESSIBILITY

- Accessible multi-generational park
- Accessible to all persons: inclusive
- Fully accessible walkway system
- Ground level access to amenities



HEALTHY LIVING

- Fitness stations / play environment
- Novice skate park
- Badminton courts / multi-use court
- Chess / game stations
- Open spaces for Tai Chi, Yoga, Meditation, etc.
- Senior friendly-fitness components



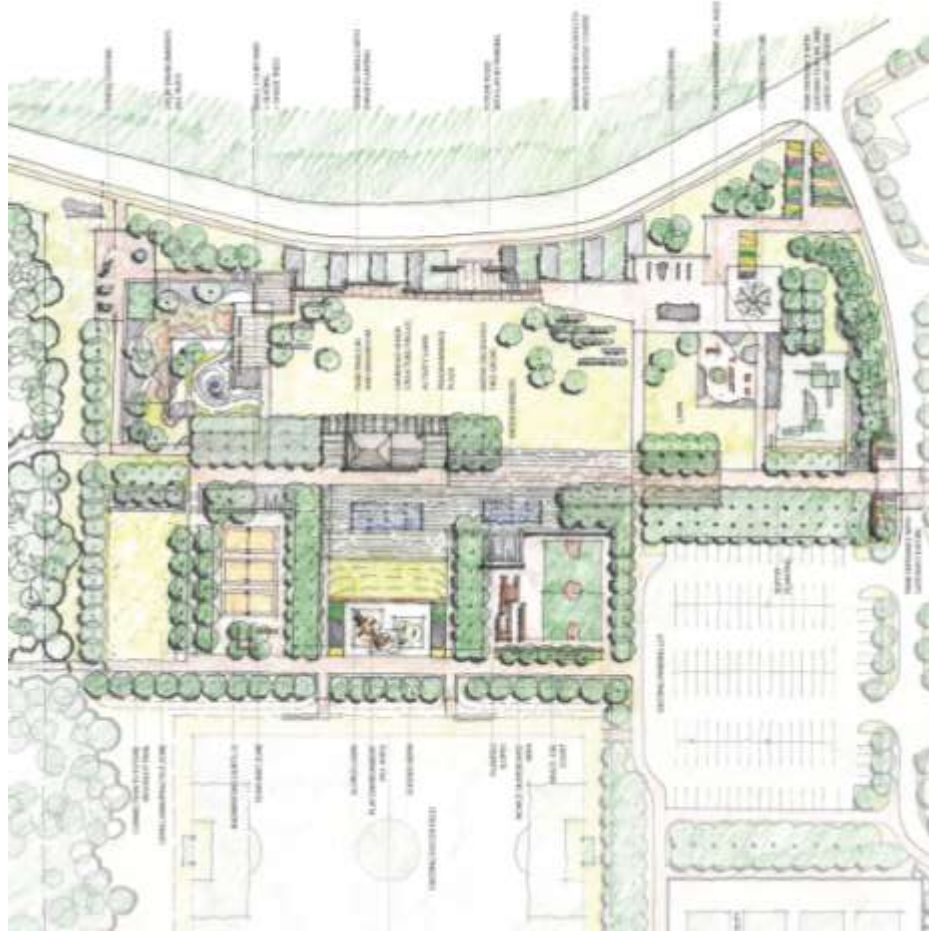
DESIGN CONSIDERATIONS Cont....

PLAY ENVIRONMENTS

- Experiential play environments
- Unique
- Fully accessible
- Stimulates sensory
- All ages
- *Inclusive*
- *Educational*
- *Inspirational*



CONCEPT 'A'



CONCEPT 'B'



PROPOSED PROJECT SCHEDULE

- Funding Is Approved – Construction Budget is \$2.9 million
- Presentation to Development Services Committee – December 6, 2011
- **Community Meeting – January 2012**
- Design Refinement and Working Drawings – February through July 2012
- Construction Tender and Tender Award – August 2012 through October 2012
- Construction Start – November 2012 (undergrounds and servicing)
- Construction Completion – December 2013

