



Building Markham's Future Together  
Journey to Excellence

# CHURCH STREET IMPROVEMENTS

(NINTH LINE TO BUR OAK AVENUE)

Project Update

May 19, 2015

# CONTENTS

1. Background
2. Construction
3. Consultation
4. Draft Staging Plan
5. Operations and Maintenance
6. Project Budget
7. Next Steps

# 1. BACKGROUND

## A) ENVIRONMENTAL ASSESSMENT

- Public Information Meeting **April 30, 2014**
- EA File Report Completed and endorsed by Markham Council **September 16, 2014**
- EA approved by MOE **October 16, 2014**

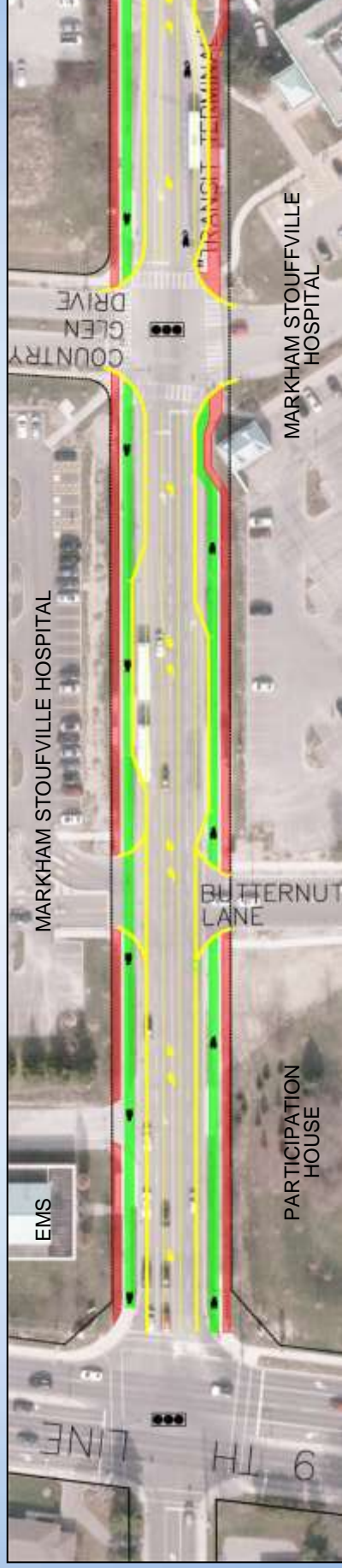
## B) DETAILED DESIGN

- 95% complete

## 2. CONSTRUCTION

### CONCEPTUAL LAYOUT

#### Church Street - Ninth Line to east of Country Glen Drive



#### LEGEND

- CYCLE TRACK
- SIDEWALK
- CURB

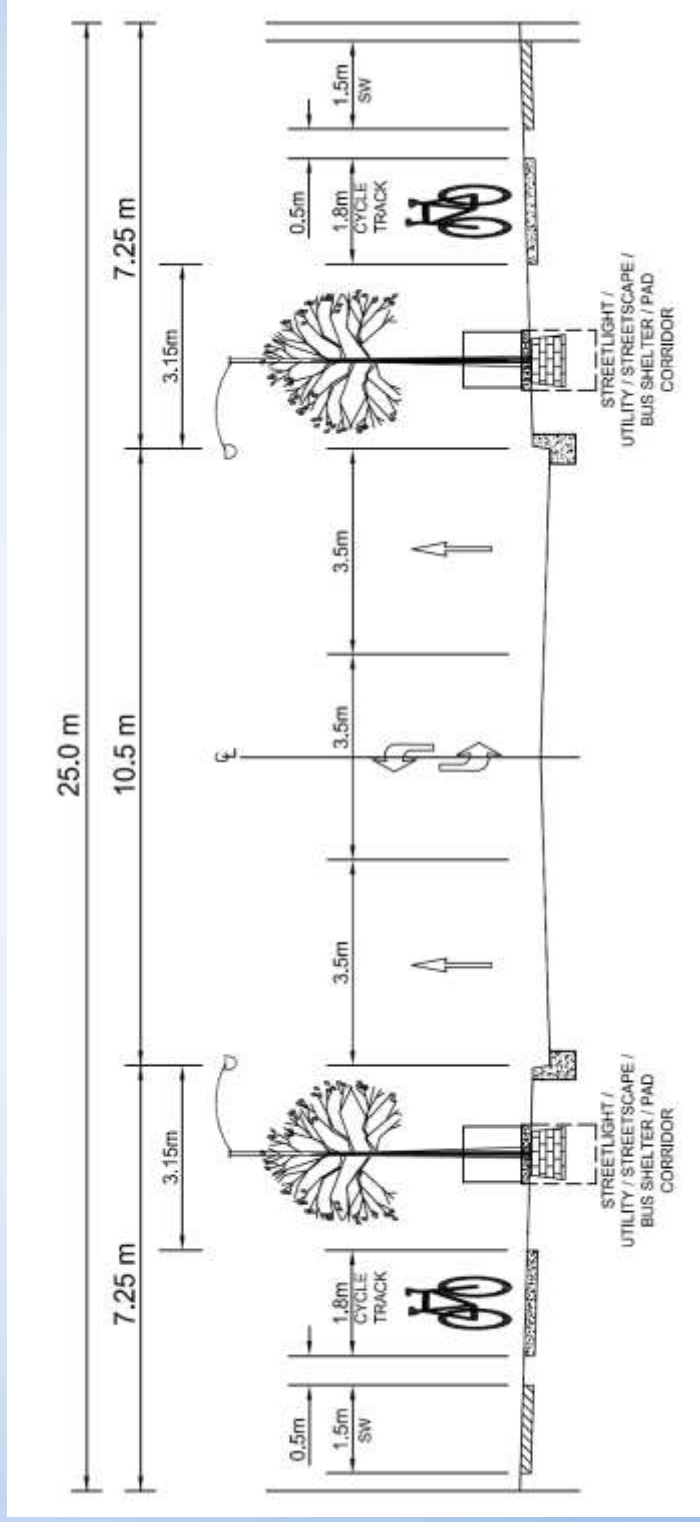
# CONCEPTUAL LAYOUT Church Street - east of Country Glen Drive to Bur Oak Avenue



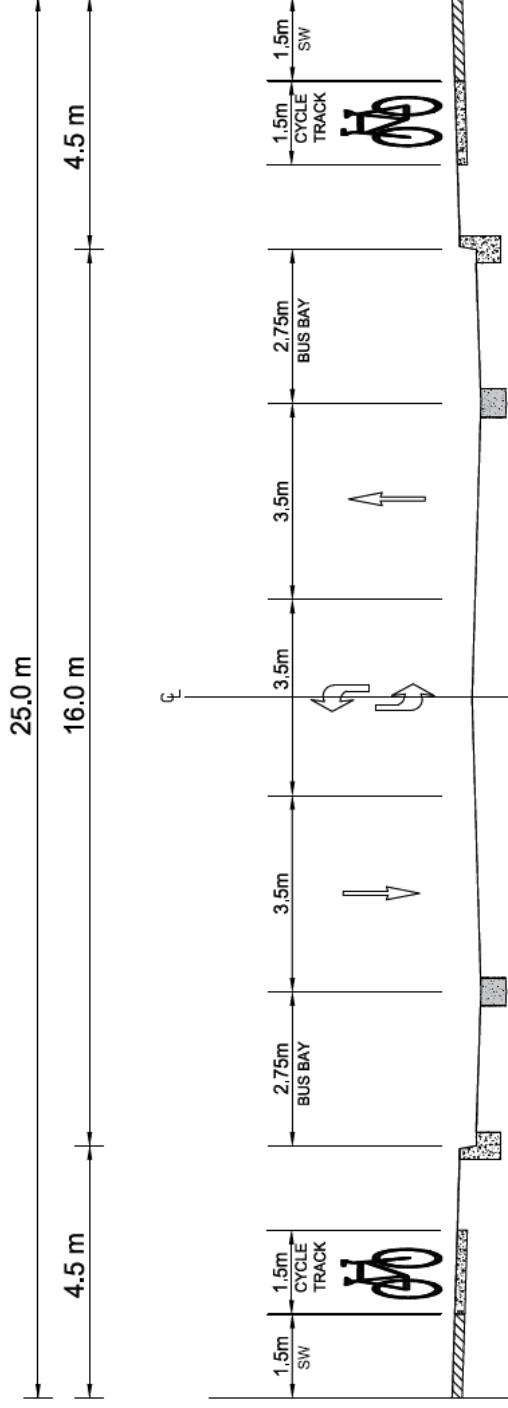
**LEGEND**

- CYCLE TRACK
- SIDEWALK
- CURB

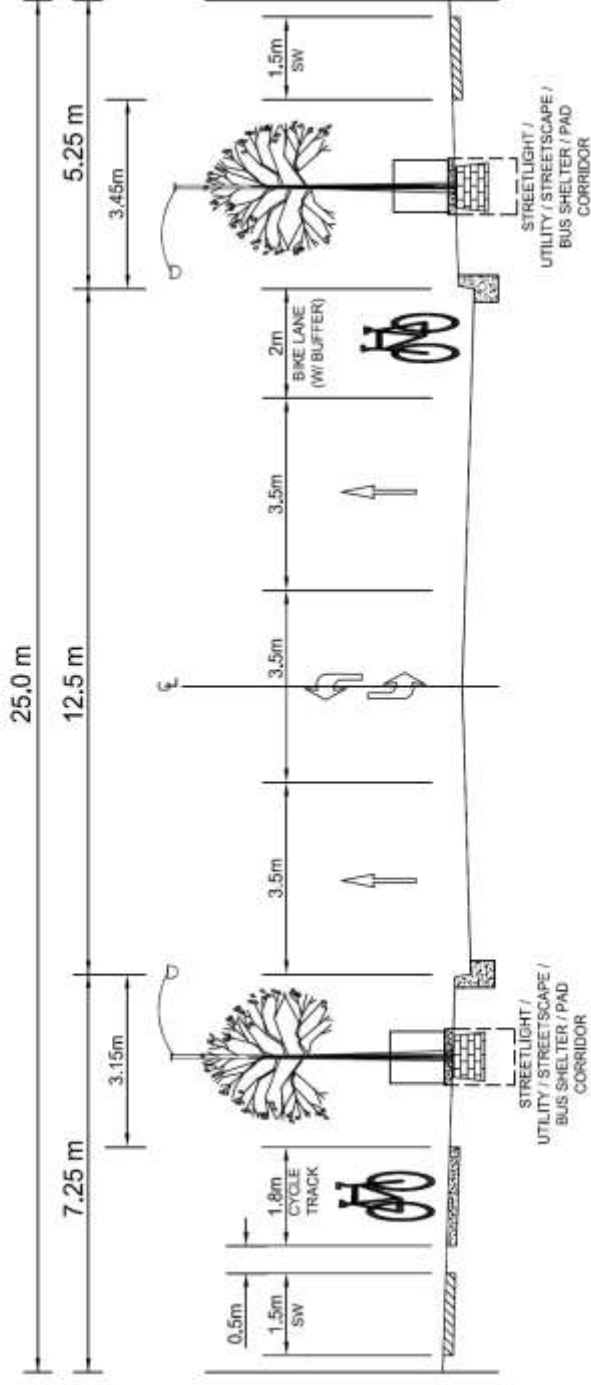
## Cross Section (Ninth Line to Country Glen)



## Cross Section - Bus Bays (Between Butternut Lane and Country Glen)



## Cross Section - Dedicated bike lane (east of Transit Terminal to Bur Oak Avenue)



### 3. CONSULTATION

- Development Services Committee and Council
- Markham Stouffville Hospital
- EMS
- Participation House
- Woodhaven Residence
- YRT/VIVA
- CPAC
- Operations and Urban Design Departments
- Region of York
- Utilities
- Cornell Ratepayers Association

## ISSUES:

- Maintain access to:
  - Ambulance Station
  - Participation House
  - Markham Stouffville Hospital (MSH)
  - MSH delivery driveway
  - MSH parking lots
  - Health Services Building
  - Woodhaven Retirement Residence
- Pedestrian access to be maintained
- Emergency access to MSH and EMS be maintained at all times
- Transit Service
- Fire Routes

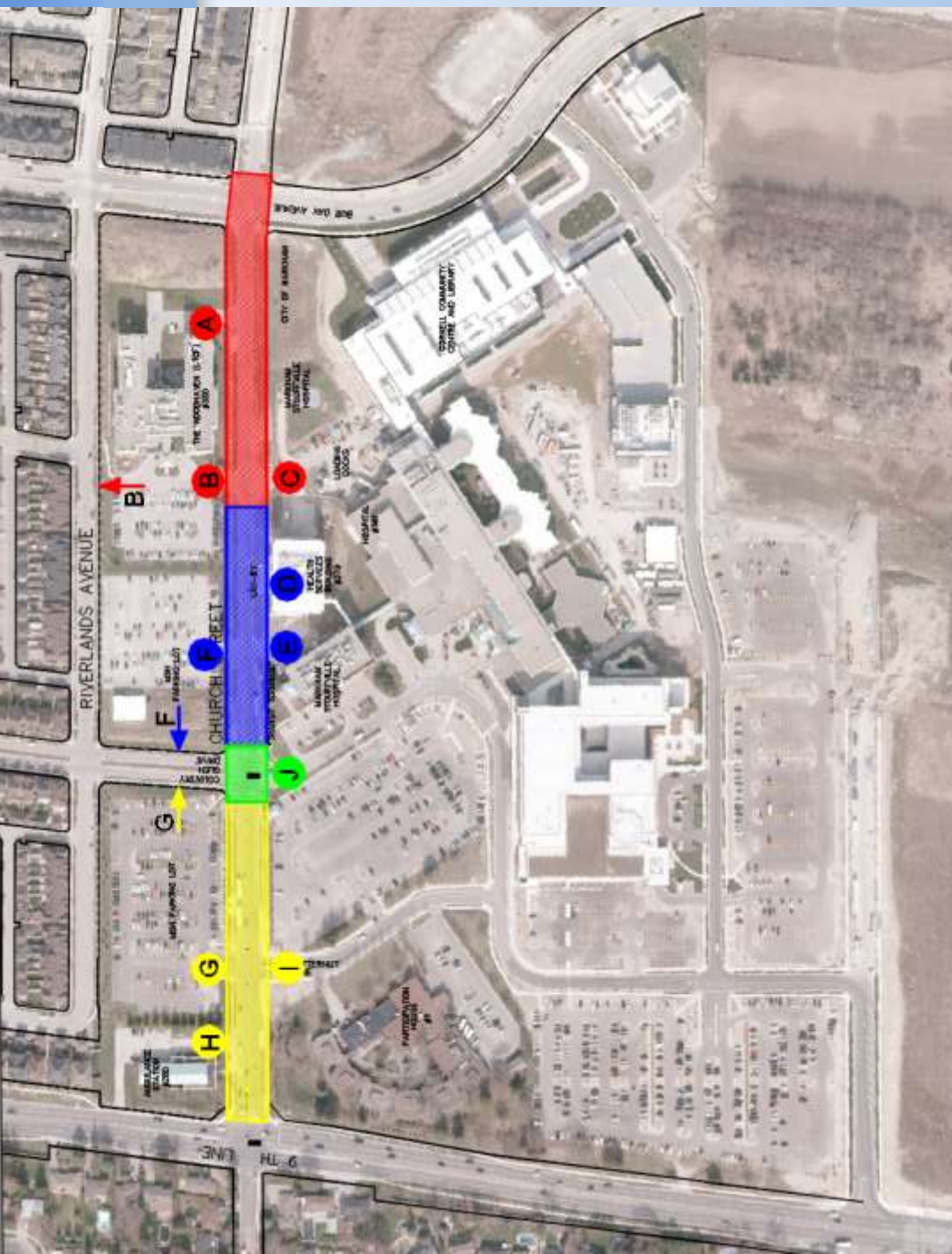
# 4. DRAFT STAGING PLAN

## LEGEND

- Stage 1**    Stage 3
- Stage 2**    Stage 4

## KEY ACCESS POINTS

- A** RETIREMENT RESIDENCE DELIVERY DRIVEWAY
- B** RETIREMENT RESIDENCE PARKING
- C** MEDICAL BUILDING / MSH
- D** MEDICAL BUILDING DROP OFF
- E** MSH DELIVERY
- F** MSH PARKING
- G** MSH PARKING
- H** AMBULANCE STATION (EMS)
- I** PARTICIPATION HOUSE / MSH ACCESS
- J** MSH ACCESS



## 4. DRAFT STAGING PLAN

- Contractor would be permitted to adjust staging plan only on basis of reducing construction time and reducing cost while still accommodating access to abutting properties
- Temporary closure of parking lot access (G, F, B) from Church Street will necessitate temporary access from Country Glen Drive and Riverlands Avenue
- Discussion with MSH regarding parking relocation and/or compensation is underway
- Staging of construction will extend construction time frame and costs
- Traffic Management Plan to be provided by contractor for approval
- Communication Plan to be implemented by Contractor, City, MSH, etc.

## 5. OPERATIONS AND MAINTENANCE

- Additional infrastructure provided under this project's contract:
  - Bike paths (boulevard and road)
  - Traffic lane (east of Country Glen to Bur Oak)
  - 25 streetlights
- Operating and Maintenance costs were reviewed with Operations and Asset Management Departments
  - \$1,800 per year is anticipated operation and maintenance costs for streetlighting
  - Staff to report back in the Fall 2015 regarding level of service and maintenance costs for bike paths
- The 2016 Operations and Asset Management operating budgets will include the incremental funds
- The Life Cycle reserve study will be updated to include an additional \$60,000 for the future replacement of the LED fixtures over the 25 year period

A photograph of a modern school building with a large glass facade and a red roof, set against a clear blue sky. The building is partially obscured by a white grid overlay.

## 6. PROJECT BUDGET

- Available funding from Capital Account **\$ 2,152,703**
  - 083-5350-14041-005 (Church Street 9<sup>th</sup> Line to Bur Oak Construction) - \$ 2,028,803
  - 083-5350-15040-005 (Church Street 9<sup>th</sup> Line to Bur Oak Utility Relocation ) \$ 123,900
- **Additional scope of work :**
  - Construction Staging
  - Full existing pavement removal and replacement
  - New watermain - Country Glen to Bur Oak
  - Full removal and reconstruction of intersection signals at Country Glen (AODA compliance)
  - Concrete bike paths on both sides (boulevard)
  - Bus pad construction (cost sharing under discussion)
- **Additional funding may be required upon tender award stage - to be funded from Development Charges (100%).**
- **If additional funding is required, Council approval for the CAO to increase the budget and award the tender during summer recess is requested. Staff will report back in the Fall 2015 regarding any funding increase.**

## 7. NEXT STEPS

- **TENDER**
  - Issue end of May 2015
  - Close end of June 2015
- **AWARD**
  - Within budget – June 2015
  - Exceeds budget – CAO delegated authority July 2015
    - Report back to Council September 2015
- **CONSTRUCTION**
  - Start August 2015 to Summer 2016